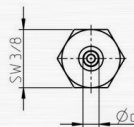
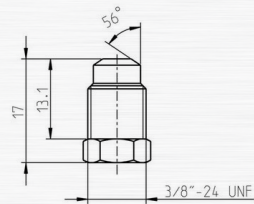
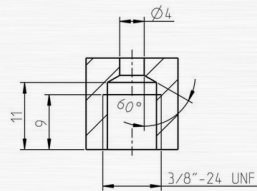


CERAMIC NOZZLE 972-CER

The ceramic nozzle type 972-cer was designed for spray bars and nozzle bars. The mvt ceramic nozzles have a nozzle factor of 0.95. A big advantage is that the ceramic insert cannot burst and the durability is also quite impressive and are far superior to sapphire. According to our experience, a service life of up to 150 hours can be achieved with a constant operating pressure of 2500 bar, as long as all components such as filters, connections and water are 100% OK.

The ceramic insert has a uniform and high quality. All inserts are checked for scratches, cracks and flow.



PROPERTIES AND ADVANTAGES

- LONG LIFETIME
- CONSTANT JET QUALITY
- HIGH-POWER AND FOCUSED WATER JET
- NEEDLE JET WITH HIGH ENERGY DENSITY
- EASY TO INSTALL AND DISASSEMBLE
- SWISS QUALITY

CERAMIC NOZZLE 972-CER

CHARACTERISTICS	TYPE
	972-CER
Operating pressure (bar)	max. 3000
Operating temp. (°C)	max. 150°
Tightening torque (Nm)	max. 40°

APPLICATIONS

- CONSTRUCTION INDUSTRY
- CONCRETE DEMOLITION
- VEHICLE AND AIRCRAFT PARTS
- MUNICIPAL OPERATIONS
- SURFACE TREATMENT

PERFORMANCES

ART. NO	NOZZLE SIZE IN US GAL/MIN AT 40 PSI	NOZZLE ØD MM	PRESSURE IN PSI / BAR						
			psi 14500	psi 21750	psi 25375	psi 29000	psi 31900	psi 36250	psi 43500
			bar 1000	bar 1500	bar 1750	bar 2000	bar 2200	bar 2500	bar 3000
			FLOW RATE IN L/MIN						
972-CER.015	0006	0.15	0.442	0.537	0.578	0.616	0.644	0.684	0.744
972-CER.020	0011	0.20	0.786	0.955	1.028	1.095	1.145	1.215	1.322
972-CER.025	0017	0.25	1.228	1.492	1.606	1.710	1.789	1.899	2.066
972-CER.030	0024	0.30	1.769	2.149	2.312	2.463	2.576	2.734	2.975
972-CER.035	0033	0.35	2.407	2.925	3.147	3.352	3.506	3.722	4.050
972-CER.040	0043	0.40	3.144	3.820	4.111	4.379	4.579	4.861	5.289
972-CER.045	0055	0.45	3.979	4.835	5.203	5.542	5.795	6.152	6.694
972-CER.050	0067	0.50	4.913	5.969	6.423	6.841	7.155	7.595	8.264
972-CER.055	0082	0.55	5.944	7.223	7.772	8.278	8.657	9.190	10.000

INSTRUCTIONS

WHEN MANUALLY OPERATING HIGH PRESSURE GUNS AND LANCES THE REPULSIVE FORCE ON THE AXIS SHOULD NOT EXCEED 250N! IF THE REPULSIVE FORCE EXCEEDS 150N, A SUPPORT / BODY ARMOUR IS REQUIRED!

	< 150 N
	< 250 N
	> 250 N



Jan van der Heijdenstraat 44
3261 LE Oud-Beijerland
The Netherlands

T +31 186 62 14 84
info@salotech.nl
www.salotech.nl