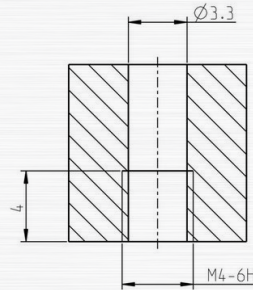


# SAPPHIRE NOZZLE 040

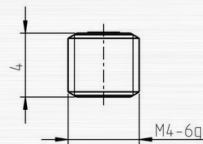
The Sapphire nozzle type 040 is mainly mounted on small spraybars and is used in industrial cleaning. The sapphire and the nozzle body are manufactured and processed in-house. The **maximum operating pressure is 1000 bar**, the best way to seal the nozzle is with Loctite or Teflontape. The nozzle is characterized by its durability, efficiency and quality.

The heart of the nozzle, its the sapphire has a consistent and high quality. All sapphire are checked for scratches, cracks and flow.



## PROPERTIES AND ADVANTAGES

- LONG LIFETIME
- CONSTANT JET QUALITY
- HIGH-POWER AND FOCUSED WATER JET
- NEEDLE JET WITH HIGH ENERGY DENSITY
- EASY TO INSTALL AND DISASSEMBLE
- SWISS QUALITY



## APPLICATIONS

- CONSTRUCTION INDUSTRY
- IRON, STEEL AND METAL INDUSTRIES
- MECHANICAL AND APPARATUS ENGINEERING
- CEMENT AND CONCRETE INDUSTRY
- INDUSTRIAL CLEANING
- SPRAYBARS



# SAPPHIRE NOZZLE 040

## PERFORMANCES

ART. NO	NOZZLE SIZE IN US GAL/MIN AT 40 PSI	NOZZLE ØD MM	PRESSURE IN PSI / BAR								
			psi 725	psi 1450	psi 2175	psi 2900	psi 3625	psi 7250	psi 10875	psi 14500	
			bar 50	bar 100	bar 150	bar 200	bar 250	bar 500	bar 750	bar 1000	
			FLOW RATE IN L/MIN								
040.010	0002	0.10	0.032	0.045	0.055	0.064	0.071	0.100	0.122	0.141	
040.0125	0003	0.125	0.050	0.071	0.086	0.100	0.111	0.157	0.191	0.220	
040.015	0004	0.15	0.072	0.102	0.124	0.143	0.160	0.226	0.275	0.316	
040.0175	0006	0.175	0.098	0.138	0.169	0.195	0.218	0.307	0.375	0.431	
040.020	0008	0.20	0.128	0.181	0.221	0.255	0.285	0.401	0.489	0.563	
040.025	0012	0.25	0.200	0.282	0.345	0.399	0.445	0.627	0.764	0.879	
040.030	0018	0.30	0.288	0.407	0.497	0.574	0.641	0.903	1.101	1.266	
040.035	0024	0.35	0.392	0.553	0.677	0.781	0.873	1.229	1.498	1.723	
040.040	0031	0.40	0.512	0.723	0.884	1.020	1.140	1.605	1.957	2.251	
040.045	0040	0.45	0.647	0.915	1.119	1.291	1.442	2.031	2.477	2.848	
040.050	0049	0.50	0.799	1.129	1.382	1.594	1.781	2.507	3.058	3.517	
040.055	0060	0.55	0.967	1.366	1.672	1.929	2.155	3.034	3.700	4.255	
040.060	0071	0.60	1.151	1.626	1.990	2.296	2.564	3.611	4.404	5.064	
040.065	0083	0.65	1.351	1.908	2.335	2.694	3.010	4.238	5.168	5.943	
040.070	0096	0.70	1.567	2.213	2.708	3.125	3.490	4.915	5.994	6.892	
040.075	0111	0.75	1.798	2.541	3.109	3.587	4.007	5.642	6.880	7.912	
040.080	0126	0.80	2.046	2.891	3.538	4.081	4.559	6.419	7.828	9.002	
040.085	0142	0.85	2.310	3.264	3.994	4.607	5.146	7.247	8.838	10.163	
040.090	0159	0.90	2.590	3.659	4.477	5.165	5.770	8.124	9.908	11.394	
040.095	0177	0.95	2.885	4.077	4.988	5.755	6.429	9.052	11.039	12.695	
040.100	0197	1.00	3.197	4.517	5.527	6.377	7.123	10.030	12.232	14.066	
040.110	0238	1.10	3.868	5.466	6.688	7.716	8.619	12.136	14.801	17.020	
040.120	0283	1.20	4.604	6.505	7.959	9.183	10.257	14.443	17.614	20.255	
040.130	0332	1.30	5.403	7.634	9.341	10.777	12.038	16.950	20.672	23.772	
040.140	0386	1.40	6.266	8.854	10.834	12.498	13.961	19.658	23.975	27.570	
040.150	0442	1.50	7.193	10.164	12.437	14.348	16.027	22.567	27.522	31.649	
040.160	0503	1.60	8.184	11.564	14.150	16.325	18.235	25.676	31.314	36.009	
040.170	0568	1.70	9.239	13.054	15.974	18.429	20.586	28.986	35.350	40.651	
040.180	0637	1.80	10.358	14.635	17.909	20.661	23.079	32.497	39.632	45.574	
040.190	0710	1.90	11.541	16.307	19.954	23.020	25.714	36.208	44.158	50.779	

### INSTRUCTIONS

WHEN MANUALLY OPERATING HIGH PRESSURE GUNS AND LANCES THE REPULSIVE FORCE ON THE AXIS SHOULD NOT EXCEED 250N! IF THE REPULSIVE FORCE EXCEEDS 150N, A SUPPORT / BODY ARMOUR IS REQUIRED!

	< 150 N
	< 250 N
	> 250 N



Jan van der Heijdenstraat 44  
3261 LE Oud-Beijerland  
The Netherlands

T +31 186 62 14 84  
info@salotech.nl  
www.salotech.nl