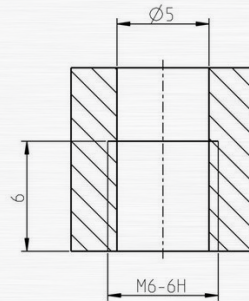


SAPPHIRE NOZZLE 060

The Sapphire nozzle type 060 is mainly mounted on spray-bars and is used in industrial cleaning and for marking removal. The **max. operating pressure is 1000 bar**, the best way to seal the nozzle is with Loctite or Teflon tape.

The heart of the nozzle, its the sapphire has a consistent and high quality. All sapphire are checked for scratches, cracks and flow.

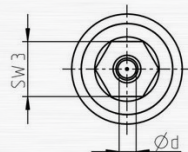
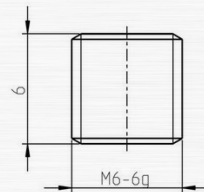


PROPERTIES AND ADVANTAGES

- LONG LIFETIME
- CONSTANT JET QUALITY
- HIGH-POWER AND FOCUSED WATER JET
- NEEDLE JET WITH HIGH ENERGY DENSITY
- EASY TO INSTALL AND DISASSEMBLE
- SWISS QUALITY

APPLICATIONS

- CONSTRUCTION INDUSTRY
- IRON, STEEL AND METAL INDUSTRIES
- MECHANICAL AND APPARATUS ENGINEERING
- CEMENT AND CONCRETE INDUSTRY
- INDUSTRIAL CLEANING
- SPRAYBARS



SAPPHIRE NOZZLE 060

PERFORMANCES

ART. NO	NOZZLE SIZE IN US GAL/MIN AT 40 PSI	NOZZLE ØD MM	PRESSURE IN PSI / BAR							
			psi 725	psi 1450	psi 2175	psi 2900	psi 3625	psi 7250	psi 10875	psi 14500
			bar 50	bar 100	bar 150	bar 200	bar 250	bar 500	bar 750	bar 1000
			FLOW RATE IN L/MIN							
060.010	0002	0.10	0.032	0.045	0.055	0.064	0.071	0.100	0.122	0.141
060.0125	0003	0.125	0.050	0.071	0.086	0.100	0.111	0.157	0.191	0.220
060.015	0004	0.15	0.072	0.102	0.124	0.143	0.160	0.226	0.275	0.316
060.0175	0006	0.175	0.098	0.138	0.169	0.195	0.218	0.307	0.375	0.431
060.020	0008	0.20	0.128	0.181	0.221	0.255	0.285	0.401	0.489	0.563
060.025	0012	0.25	0.200	0.282	0.345	0.399	0.445	0.627	0.764	0.879
060.030	0018	0.30	0.288	0.407	0.497	0.574	0.641	0.903	1.101	1.266
060.035	0024	0.35	0.392	0.553	0.677	0.781	0.873	1.229	1.498	1.723
060.040	0031	0.40	0.512	0.723	0.884	1.020	1.140	1.605	1.957	2.251
060.045	0040	0.45	0.647	0.915	1.119	1.291	1.442	2.031	2.477	2.848
060.050	0049	0.50	0.799	1.129	1.382	1.594	1.781	2.507	3.058	3.517
060.055	0060	0.55	0.967	1.366	1.672	1.929	2.155	3.034	3.700	4.255
060.060	0071	0.60	1.151	1.626	1.990	2.296	2.564	3.611	4.404	5.064
060.065	0083	0.65	1.351	1.908	2.335	2.694	3.010	4.238	5.168	5.943
060.070	0096	0.70	1.567	2.213	2.708	3.125	3.490	4.915	5.994	6.892
060.075	0111	0.75	1.798	2.541	3.109	3.587	4.007	5.642	6.880	7.912
060.080	0126	0.80	2.046	2.891	3.538	4.081	4.559	6.419	7.828	9.002
060.085	0142	0.85	2.310	3.264	3.994	4.607	5.146	7.247	8.838	10.163
060.090	0159	0.90	2.590	3.659	4.477	5.165	5.770	8.124	9.908	11.394
060.095	0177	0.95	2.885	4.077	4.988	5.755	6.429	9.052	11.039	12.695
060.100	0197	1.00	3.197	4.517	5.527	6.377	7.123	10.030	12.232	14.066
060.110	0238	1.10	3.868	5.466	6.688	7.716	8.619	12.136	14.801	17.020
060.120	0283	1.20	4.604	6.505	7.959	9.183	10.257	14.443	17.614	20.255
060.130	0332	1.30	5.403	7.634	9.341	10.777	12.038	16.950	20.672	23.772
060.140	0386	1.40	6.266	8.854	10.834	12.498	13.961	19.658	23.975	27.570
060.150	0442	1.50	7.193	10.164	12.437	14.348	16.027	22.567	27.522	31.649
060.160	0503	1.60	8.184	11.564	14.150	16.325	18.235	25.676	31.314	36.009
060.170	0568	1.70	9.239	13.054	15.974	18.429	20.586	28.986	35.350	40.651
060.180	0637	1.80	10.358	14.635	17.909	20.661	23.079	32.497	39.632	45.574
060.190	0710	1.90	11.541	16.307	19.954	23.020	25.714	36.208	44.158	50.779
060.200	0787	2.00	12.788	18.068	22.109	25.507	28.493	40.119	48.928	56.265
060.220	0952	2.20	15.473	21.863	26.752	30.864	34.476	48.544	59.203	68.080
060.210	0867	2.10	14.099	19.920	24.376	28.122	31.413	44.232	53.943	62.032
060.230	1040	2.30	16.912	23.896	29.240	33.733	37.681	53.058	64.707	74.410
060.240	1133	2.40	18.414	26.019	31.838	36.730	41.029	57.772	70.456	81.021
060.250	1229	2.50	19.981	28.232	34.546	39.855	44.520	62.686	76.450	87.913
060.260	1329	2.60	21.611	30.536	37.365	43.107	48.152	67.802	82.688	95.087

SAPPHIRE NOZZLE 060

PERFORMANCES

ART. NO	NOZZLE SIZE IN US GAL/MIN AT 40 PSI	NOZZLE ØD MM	PRESSURE IN PSI / BAR								
			psi	psi	psi	psi	psi	psi	psi	psi	psi
			725	1450	2175	2900	3625	7250	10875	14500	
			bar	bar	bar	bar	bar	bar	bar	bar	bar
			50	100	150	200	250	500	750	1000	
FLOW RATE IN L/MIN											
060.260	1329	2.60	21.611	30.536	37.365	43.107	48.152	67.802	82.688	95.087	
060.270	1434	2.70	23.306	32.930	40.294	46.487	51.928	73.117	89.171	102.542	
060.280	1542	2.80	25.064	35.414	43.335	49.994	55.845	78.634	95.899	110.278	
060.290	1654	2.90	26.886	37.989	46.485	53.629	59.906	84.351	102.871	118.296	
060.300	1770	3.00	28.773	40.654	49.746	57.391	64.108	90.268	110.088	126.595	

INSTRUCTIONS

WHEN MANUALLY OPERATING HIGH PRESSURE GUNS AND LANCES THE REPULSIVE FORCE ON THE AXIS SHOULD NOT EXCEED 250N! IF THE REPULSIVE FORCE EXCEEDS 150N, A SUPPORT / BODY ARMOUR IS REQUIRED!

	< 150 N
	< 250 N
	> 250 N



Jan van der Heijdenstraat 44
3261 LE Oud-Beijerland
The Netherlands

T +31 186 62 14 84
info@salotech.nl
www.salotech.nl