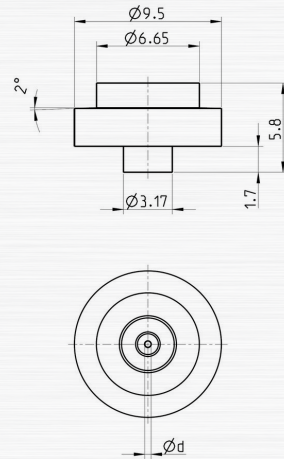


# SAPPHIRE NOZZLE 270

The sapphire nozzle type 270 can be used as a pure water cutting nozzle or as an abrasive cutting nozzle. This nozzle is gasketed without the sealing angle but still it has a 2° angle.

- R = Pure water jet cutting nozzles, aiming accuracy 100% tested
- RX = Pure water jet cutting nozzles, aiming accuracy not tested
- A = Abrasive cutting nozzles, aiming accuracy 100% tested
- AX = Abrasive cutting nozzles, aiming accuracy not tested



## PROPERTIES AND ADVANTAGES

- LONG LIFETIME
- CONSTANT JET QUALITY
- ACCURATE CUTTING ACCURACY
- NARROW CUTTING WIDTH
- HIGH CUTTING PERFORMANCE
- SWISS QUALITY

CHARACTERISTICS	TYPE
	270
Operating pressure (bar)	max. 4000
Operating temp. (°C)	max. 150°

## TEST OF THE AIMING ACCURACY

- THE DISTANCE FROM THE NOZZLE TO THE TARGET MARK IS 100 MM.
- THE TEST PRESSURE IS 50 BAR.
- TESTING OF THE AIMING ACCURACY IS ONLY CARRIED OUT IF REQUESTED BY THE CUSTOMER.

## APPLICATIONS

- PURE WATER:  
PAPER, CARDBOARD, CORRUGATED CARDBOARD, WOOD, PLASTICS, FOOD, BAKERY, PRODUCT, FROZEN FOODS, MEAT, FISH, COMPOSITE MATERIALS, VEHICLE PARTS SUCH AS CARPETS, DOOR PANELS, SHOCK ABSORBERS, DASHBOARDS, INSTRUMENT PANELS, REAR WINDOW SHELVES, ETC.
- ABRASIVE:  
METAL, TITANIUM, ALUMINIUM, STONE, MARBLE, GRANITE, CERAMIC, REINFORCED CONCRETE, CEMENT, MINERAL WOOL, SHATTERPROOF-, SAFETY- AND BULLETPROOF GLASS, WOOD, PLASTICS, COMPOSITE MATERIALS, VEHICLE AND AIRCRAFT PARTS, ETC.

# PERFORMANCES

ART. NO	NOZZLE ØD MM	PRESSURE IN PSI / BAR			
		psi 36250	psi 43500	psi 50750	psi 58000
		bar 2500	bar 3000	bar 3500	bar 4000
FLOW RATE IN L/MIN					
270.008	0.08	0.129	0.140	0.151	0.160
270.010	0.10	0.201	0.219	0.235	0.250
270.0125	0.125	0.315	0.343	0.368	0.391
270.015	0.15	0.453	0.493	0.529	0.563
270.0175	0.175	0.617	0.671	0.721	0.766
270.020	0.20	0.806	0.877	0.941	1.000
270.025	0.25	1.259	1.370	1.471	1.563
270.0275	0.275	1.524	1.658	1.779	1.891
270.030	0.30	1.813	1.973	2.118	2.250
270.035	0.35	2.468	2.685	2.882	3.063
270.040	0.40	3.223	3.508	3.765	4.001
270.045	0.45	4.080	4.439	4.765	5.064
270.050	0.50	5.037	5.481	5.882	6.251
270.055	0.55	6.094	6.632	7.118	7.564
270.060	0.60	7.253	7.892	8.471	9.002
270.065	0.65	8.512	9.262	9.941	10.565
270.070	0.70	9.872	10.742	11.530	12.253
270.085	0.75	11.333	12.331	13.236	14.066
270.080	0.80	12.894	14.030	15.059	16.004
270.085	0.85	14.556	15.839	17.000	18.067
270.090	0.90	16.319	17.757	19.059	20.254
270.095	0.95	18.182	19.785	21.236	22.568
270.100	1.00	20.147	21.922	23.530	25.006