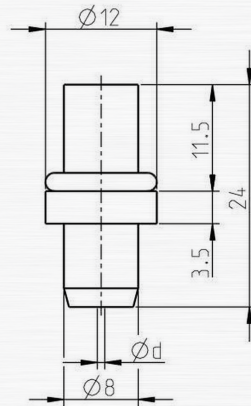


# SAPPHIRE INSERT NOZZLE 916

The nozzle type 916 was designed for surface treatment and the usage on handlances. The nozzle is characterized above all by its service life, efficiency and quality. Due to the advantageous shape, this nozzle can be easily mounted on the hand lance with our union nut. The heart of the nozzle, is the sapphire has a uniform and high quality. All sapphires are checked for scratches, cracks and flow.

This product is compatible with the following brands or products.

- Style 5                      - Type A
- Form 4                      - Type B



## PROPERTIES AND ADVANTAGES

- LONG LIFETIME
- CONSTANT JET QUALITY
- HIGH-POWER AND FOCUSED WATER JET
- NEEDLE JET WITH HIGH ENERGY DENSITY
- EASY TO INSTALL AND DISASSEMBLE
- SWISS QUALITY

## APPLICATIONS

- CONSTRUCTION INDUSTRY
- MINING
- CONCRETE DEMOLITION
- SURFACE TREATMENT
- OFFSHORE DEPLOYMENT

CHARACTERISTICS	TYPE
Operating pressure (bar)	max. 3000
Operating temp. (°C)	max. 150°

# SAPPHIRE INSERT NOZZLE 916

## PERFORMANCES

ART. NO	NOZZLE SIZE IN US GAL/MIN AT 40 PSI	NOZZLE ØD MM	PRESSURE IN PSI / BAR						
			psi	psi	psi	psi	psi	psi	
			7250	10875	14500	21750	29000	36250	43500
			bar	bar	bar	bar	bar	bar	bar
			FLOW RATE IN L/MIN						
			500	750	1000	1500	2000	2500	3000
916.010	0002	0.10	0.100	0.122	0.141	0.171	0.196	0.217	0.237
916.0125	0003	0.125	0.157	0.191	0.220	0.267	0.306	0.340	0.370
916.015	0004	0.15	0.226	0.275	0.316	0.385	0.441	0.489	0.532
916.0175	0006	0.175	0.307	0.375	0.431	0.523	0.600	0.666	0.725
916.020	0008	0.20	0.401	0.489	0.563	0.684	0.784	0.870	0.946
916.025	0012	0.25	0.627	0.764	0.879	1.068	1.224	1.359	1.479
916.030	0018	0.30	0.903	1.101	1.266	1.538	1.763	1.957	2.130
916.035	0025	0.35	1.265	1.542	1.774	2.155	2.470	2.742	2.984
916.040	0032	0.40	1.652	2.015	2.317	2.815	3.226	3.582	3.897
916.045	0041	0.45	2.091	2.550	2.932	3.563	4.083	4.533	4.933
916.050	0050	0.50	2.581	3.148	3.620	4.399	5.041	5.596	6.090
916.055	0061	0.55	3.123	3.809	4.380	5.322	6.100	6.772	7.368
916.060	0072	0.60	3.717	4.533	5.213	6.334	7.259	8.059	8.769
916.065	0085	0.65	4.362	5.320	6.118	7.434	8.519	9.458	10.291
916.070	0098	0.70	5.059	6.170	7.095	8.621	9.881	10.969	11.936
916.075	0113	0.75	5.808	7.083	8.145	9.897	11.342	12.592	13.702
916.080	0130	0.80	6.702	8.174	9.399	11.421	13.090	14.531	15.812
916.085	0147	0.85	7.566	9.228	10.611	12.893	14.777	16.404	17.850
916.090	0165	0.90	8.483	10.345	11.896	14.455	16.566	18.391	20.012
916.095	0186	0.95	9.584	11.689	13.441	16.332	18.718	20.780	22.611
916.100	0207	1.00	10.620	12.952	14.894	18.097	20.740	23.025	25.054
916.110	0250	1.10	12.850	15.671	18.021	21.897	25.096	27.860	30.316
916.120	0297	1.20	15.293	18.650	21.447	26.059	29.866	33.156	36.078
916.130	0349	1.30	17.947	21.888	25.170	30.584	35.051	38.912	42.342
916.140	0405	1.40	20.815	25.385	29.191	35.470	40.651	45.129	49.106
916.150	0465	1.50	23.895	29.141	33.510	40.718	46.666	51.806	56.372
916.160	0536	1.60	27.564	33.616	38.657	46.971	53.833	59.762	65.030
916.170	0605	1.70	31.118	37.950	43.640	53.026	60.772	67.466	73.412
916.180	0679	1.80	34.886	42.546	48.925	59.448	68.132	75.636	82.303
916.190	0756	1.90	38.870	47.404	54.512	66.237	75.913	84.274	91.702
916.200	0861	2.00	44.249	53.965	62.056	75.404	86.418	95.937	104.393
916.210	0974	2.10	50.086	61.083	70.242	85.349	97.817	108.591	118.162
916.220	1097	2.20	56.397	68.780	79.093	96.104	110.143	122.274	133.052
916.230	1199	2.30	61.641	75.175	86.447	105.040	120.384	133.643	145.422
916.240	1306	2.40	67.117	81.854	94.127	114.372	131.080	145.517	158.343
916.250	1417	2.50	72.827	88.817	102.135	124.102	142.230	157.896	171.813

# SAPPHIRE INSERT NOZZLE 916

## PERFORMANCES

ART. NO	NOZZLE SIZE IN US GAL/MIN AT 40 PSI	NOZZLE ØD MM	PRESSURE IN PSI / BAR								
			psi	psi	psi	psi	psi	psi	psi		
			7250	10875	14500	21750	29000	36250	43500		
			bar	bar	bar	bar	bar	bar	bar	bar	
			500	750	1000	1500	2000	2500	3000		
			FLOW RATE IN L/MIN								
916.260	1532	2.60	78.770	96.064	110.469	134.228	153.836	170.780	185.833		
916.270	1653	2.70	84.945	103.596	119.130	144.752	165.898	184.170	200.402		
916.280	1777	2.80	91.354	111.412	128.118	155.673	178.414	198.064	215.522		
916.290	1906	2.90	97.996	119.512	137.432	166.991	191.385	212.465	231.191		
916.300	2040	3.00	104.871	127.896	147.074	178.707	204.812	227.370	247.410		

### INSTRUCTIONS

WHEN MANUALLY OPERATING HIGH PRESSURE GUNS AND LANCES THE REPULSIVE FORCE ON THE AXIS SHOULD NOT EXCEED 250N! IF THE REPULSIVE FORCE EXCEEDS 150N, A SUPPORT / BODY ARMOUR IS REQUIRED!

	< 150 N
	< 250 N
	> 250 N



Jan van der Heijdenstraat 44  
3261 LE Oud-Beijerland  
The Netherlands

T +31 186 62 14 84  
info@salotech.nl  
www.salotech.nl