

SAPPHIRE NOZZLE 965

The high performance sapphire nozzle type 965 is still the most popular nozzle for surface treatment. This model was designed as a pointed nozzle for hand lance operation, or as an insert for a rotary nozzle for paint stripping on ships, and also as an insert for spray-bars. The nozzle is characterized above all by its service life, efficiency and quality and can be used up to an operating pressure of 3000 bar. The nozzle body consists of a one-piece construction with rolled thread and formed/forged hexagon socket. This manufacturing process gives our nozzle bodies higher strength reserves compared to one-piece/clamping parts.

The nozzle neck is manufactured very precisely and has a perfect concentricity with the sealing edge. The 39° sealing edge has no roundings or double angles and a greater wall thickness than conventional nozzles. Therefore there can be no deformation of the nozzle body at the sealing edge.

The heart of the nozzle, its the sapphire has a consistent and high quality. All sapphire are checked for scratches, cracks and flow.

This nozzle has been subjected to a burst and pressure test by an accredited testing laboratory STS 0052 according to harmonized standard EN 12162+A1:2009. And withstood the 30 minute load of 3930 bar.

This product is compatible with the following brands or products.

- Type P
- Serie 3261
- Form 21



PROPERTIES AND ADVANTAGES

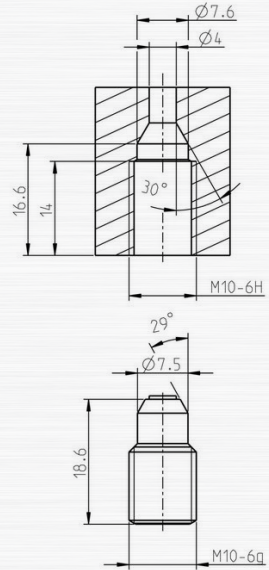
- LONG LIFETIME
- CONSTANT JET QUALITY
- HIGH-POWER AND FOCUSED WATER JET
- NEEDLE JET WITH HIGH ENERGY DENSITY
- EASY TO INSTALL AND DISASSEMBLE
- SWISS QUALITY

CHARACTERISTICS	TYPE
	965
Operating pressure (bar)	max. 3000
Operating temp. (°C)	max. 150°
Tightening torque (Nm)	max. 25°

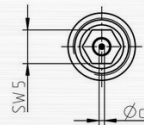
SAPPHIRE INSERT NOZZLE 965

APPLICATIONS

- AUTOMOBILE AND AIRCRAFT INDUSTRY
- CONSTRUCTION INDUSTRY
- MINING
- IRON, STEEL AND METAL INDUSTRIES
- MECHANICAL AND APPARATUS ENGINEERING
- FOOD INDUSTRY
- OFFSHORE DEPLOYMENT
- SHIPBUILDING
- CEMENT AND CONCRETE INDUSTRY
- CONCRETE DEMOLITION
- SURFACE TREATMENT
- SPRAYBARS



PERFORMANCES



ART. NO	NOZZLE SIZE IN US GAL/MIN AT 40 PSI	NOZZLE ØD MM	PRESSURE IN PSI / BAR									
			psi 2900	psi 7250	psi 10875	psi 14500	psi 21750	psi 29000	psi 36250	psi 43500		
			bar 200	bar 500	bar 750	bar 1000	bar 1500	bar 2000	bar 2500	bar 3000		
FLOW RATE IN L/MIN												
965.010	0002	0.10	0.064	0.100	0.122	0.141	0.171	0.196	0.217	0.237		
965.0125	0003	0.125	0.100	0.157	0.191	0.220	0.267	0.306	0.340	0.370		
965.015	0004	0.15	0.143	0.226	0.275	0.316	0.385	0.441	0.489	0.532		
965.0175	0006	0.175	0.195	0.307	0.375	0.431	0.523	0.600	0.666	0.725		
965.020	0008	0.20	0.255	0.401	0.489	0.563	0.684	0.784	0.870	0.946		
965.025	0012	0.25	0.399	0.627	0.764	0.879	1.068	1.224	1.359	1.479		
965.030	0018	0.30	0.574	0.903	1.101	1.266	1.538	1.763	1.957	2.130		
965.035	0025	0.35	0.804	1.265	1.542	1.774	2.155	2.470	2.742	2.984		
965.040	0032	0.40	1.050	1.652	2.015	2.317	2.815	3.226	3.582	3.897		
965.045	0041	0.45	1.329	2.091	2.550	2.932	3.563	4.083	4.533	4.933		
965.050	0050	0.50	1.641	2.581	3.148	3.620	4.399	5.041	5.596	6.090		

SAPPHIRE INSERT NOZZLE 965

ART. NO	NOZZLE SIZE IN US GAL/MIN AT 40 PSI	NOZZLE ØD MM	PRESSURE IN PSI / BAR								
			psi	psi	psi	psi	psi	psi	psi	psi	psi
			2900	7250	10875	14500	21750	29000	36250	43500	
			bar	bar	bar	bar	bar	bar	bar	bar	bar
			FLOW RATE IN L/MIN								
			200	500	750	1000	1500	2000	2500	3000	
965.055	0061	0.55	1.986	3.123	3.809	4.380	5.322	6.100	6.772	7.368	
965.060	0073	0.60	2.363	3.717	4.533	5.213	6.334	7.259	8.059	8.769	
965.065	0085	0.65	2.773	4.362	5.320	6.118	7.434	8.519	9.458	10.291	
965.070	0099	0.70	3.217	5.059	6.170	7.095	8.621	9.881	10.969	11.936	
965.075	0114	0.75	3.692	5.808	7.083	8.145	9.897	11.342	12.592	13.702	
965.080	0131	0.80	4.261	6.702	8.174	9.399	11.421	13.090	14.531	15.812	
965.085	0148	0.85	4.810	7.566	9.228	10.611	12.893	14.777	16.404	17.850	
965.090	0166	0.90	5.393	8.483	10.345	11.896	14.455	16.566	18.391	20.012	
965.095	0187	0.95	6.094	9.584	11.689	13.441	16.332	18.718	20.780	22.611	
965.100	0208	1.00	6.752	10.620	12.952	14.894	18.097	20.740	23.025	25.054	
965.110	0251	1.10	8.170	12.850	15.671	18.021	21.897	25.096	27.860	30.316	
965.120	0299	1.20	9.723	15.293	18.650	21.447	26.059	29.866	33.156	36.078	
965.130	0351	1.30	11.411	17.947	21.888	25.170	30.584	35.051	38.912	42.342	
965.140	0407	1.40	13.234	20.815	25.385	29.191	35.470	40.651	45.129	49.106	
965.150	0467	1.50	15.192	23.895	29.141	33.510	40.718	46.666	51.806	56.372	
965.160	0539	1.60	17.525	27.564	33.616	38.657	46.971	53.833	59.762	65.030	
965.170	0608	1.70	19.784	31.118	37.950	43.640	53.026	60.772	67.466	73.412	
965.180	0682	1.80	22.180	34.886	42.546	48.925	59.448	68.132	75.636	82.303	
965.190	0760	1.90	24.713	38.870	47.404	54.512	66.237	75.913	84.274	91.702	
965.200	0865	2.00	28.133	44.249	53.965	62.056	75.404	86.418	95.937	104.393	
965.210	0979	2.10	31.844	50.086	61.083	70.242	85.349	97.817	108.591	118.162	
965.220	1103	2.20	35.856	56.397	68.780	79.093	96.104	110.143	122.274	133.052	
965.230	1205	2.30	39.190	61.641	75.175	86.447	105.040	120.384	133.643	145.422	
965.240	1313	2.40	42.672	67.117	81.854	94.127	114.372	131.080	145.517	158.343	
965.250	1424	2.50	46.302	72.827	88.817	102.135	124.102	142.230	157.896	171.813	
965.260	1540	2.60	50.080	78.770	96.064	110.469	134.228	153.836	170.780	185.833	
965.270	1661	2.70	54.007	84.945	103.596	119.130	144.752	165.898	184.170	200.402	
965.280	1786	2.80	58.081	91.354	111.412	128.118	155.673	178.414	198.064	215.522	
965.290	1917	2.90	62.304	97.996	119.512	137.432	166.991	191.385	212.465	231.191	
965.300	2051	3.00	66.675	104.871	127.896	147.074	178.707	204.812	227.370	247.410	

INSTRUCTIONS

WHEN MANUALLY OPERATING HIGH PRESSURE GUNS AND LANCES THE REPULSIVE FORCE ON THE AXIS SHOULD NOT EXCEED 250N! IF THE REPULSIVE FORCE EXCEEDS 150N, A SUPPORT / BODY ARMOUR IS REQUIRED!

	< 150 N
	< 250 N
	> 250 N



Jan van der Heijdenstraat 44
3261 LE Oud-Beijerland
The Netherlands

T +31 186 62 14 84
info@salotech.nl
www.salotech.nl