

DERC DP-Nozzle

FOR (RIGID) LANCES AND LANCING MACHINES UP TO 1500 BAR

- + INNOVATIVE DESIGN
- + SHORT DELIVERY TIME
- + CONFIGURED ON REQUEST
- + MAX. WORKING PRESSURE 1500 BAR

**MADE BY
DERC**

DERC DP-Nozzle

FOR FLEX AND RIGID LANCES UP TO 1500 BAR

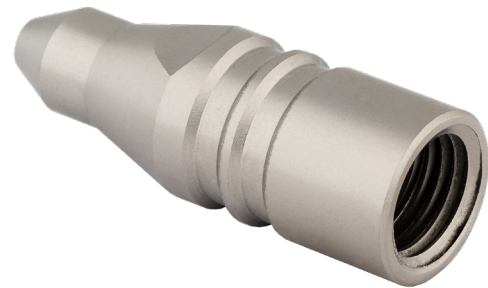
The DERC Penetrator Type, point shape model (DP-nozzle) is designed for flex and rigid lances, with a maximum pressure of 1500 bar.

STOCK ITEM

The DP-nozzle is a stock item with a short delivery time and an attractive price level.

CONFIGURED ON REQUEST

The nozzle will be optimally configured for your working conditions. Based on your requirements and specifications (such as pressure, pump capacity, use as pulling/pushing or neutral, connection, thread, permissible reaction force and spray pattern) we can advise you on the optimal configuration.



DERC DP-NOZZLE

CONNECTION	THREAD	LENGTH	DIAMETER	PART NO.
1/16" NPT	Female	30 mm	Ø 10 mm	DP-116NF
1/8" NPT	Female	35 mm	Ø 12 mm	DP-18NF
1/4" NPT	Female	45 mm	Ø 16 mm	DP-14NF

DERC SALOTECH - ORIGINAL EQUIPMENT MANUFACTURER AND SUPPLIER OF INNOVATIVE HIGH PRESSURE WATER JETTING SOLUTIONS, AUTOMATED EQUIPMENT AND ACCESSORIES. WE PROVIDE STATE OF THE ART KNOWLEDGE AND SERVICES.