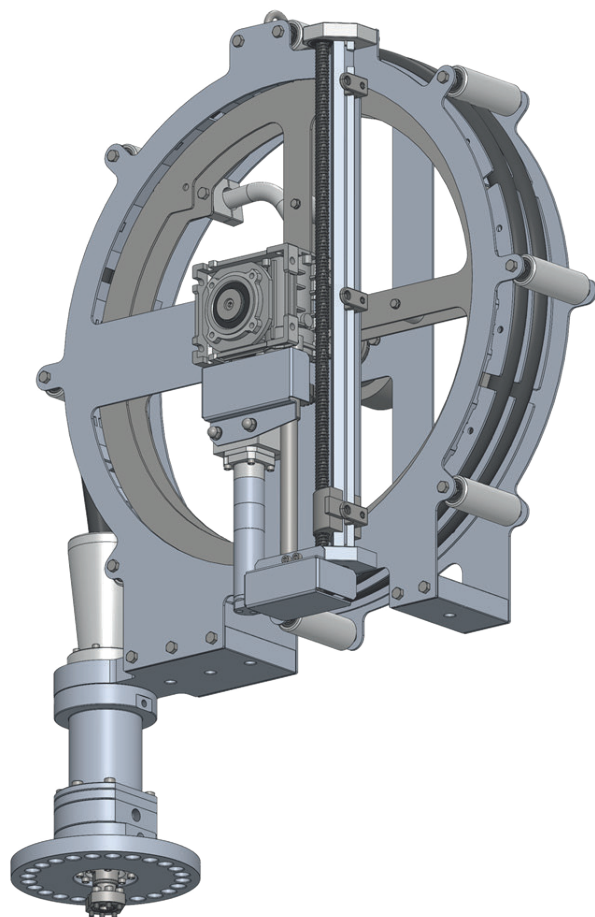


CLEANING SYSTEMS FOR INDUSTRIAL TANKS



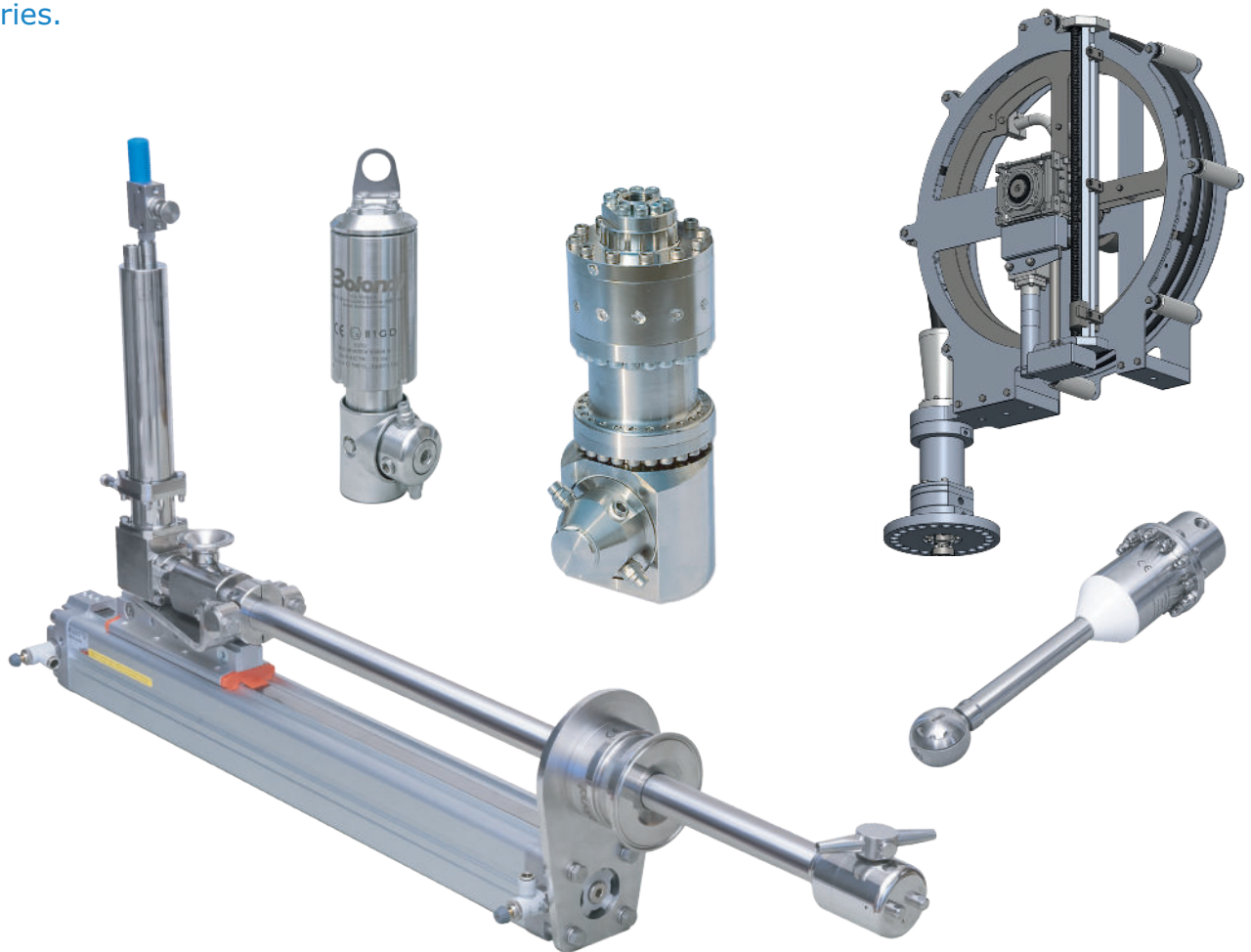
DERC
SALOTECH

**General
Catalogue**

COMPANY PROFILE

DERC SALOTECH offers total solutions, systems and all necessary accessories for high pressure water jetting. With 40 years of dedication to the high pressure water jetting technology for industrial cleaning and surface preparation, we are a quality partner for professionals all over the world. DERC Salotech services thousands of customers and organizations in more than 55 countries.

As an original water jetting equipment manufacturer we continuously design, develop and produce new products and innovations that will make your job easier, safer and more effective.



ROTATING CLEANING HEADS WITH FRONT SPRAY/SECTOR CLEANING

P.4

- PW SERIES
- SW SERIES ▶ Max. 200 bar
- XC070E-PT

LOW-PRESSURE ROTATING HEADS FOR INTERNAL CLEANING

P.14

- RT SERIES ▶ Max. 10 bar
- XM SERIES

ROTATING HEADS FOR INTERNAL CLEANING

P.20

- IB200 ▶ Max. 200 bar
- FW ▶ Max. 400 bar
- MW SERIES ▶ Max. 500 bar
- RW SERIES
- XB SERIES ▶ Max. 200 bar
- XC SERIES

ROTATING CLEANING HEADS WITH LINEAR MOVEMENT

P.32

- RT SERIES
- TA SERIES
- XT SERIES

ROTATING CLEANING HEADS WITH ROTARY MOVEMENT

P.44

- TA0500-TA0600 SERIES

ACCESSORIES

P.46

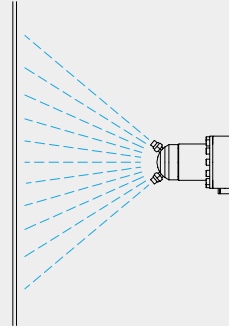


Acquamotor (water-driven)

PW049-AAB self-rotating cleaning head with flow-rate priority and lateral discharge.
Nozzle holder: 6 different cleaning angles.

APPLICATIONS

- Car washes



PW049-AAB

TECHNICAL SPECIFICATIONS

FLOW RATE 15 - 30 l/min

MAX PRESSURE 150 bar

MAX TEMPERATURE 90 °C

WATER INLET 3/8" G

NOZZLES 1/8" NPT

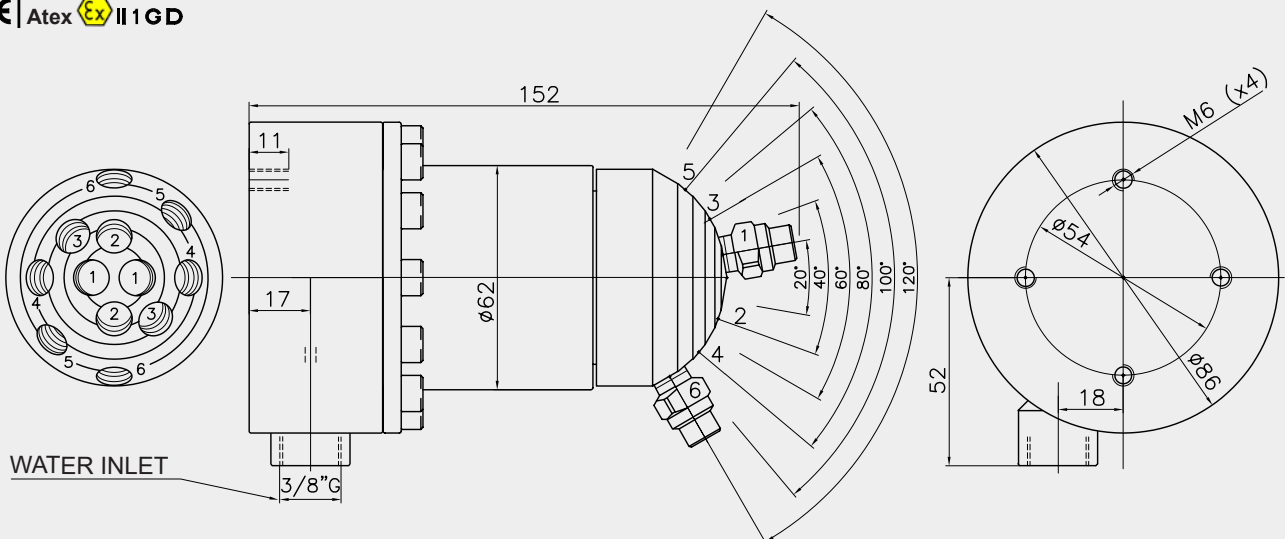
MATERIALS
Gaskets: NBR
AISI 316 - ALUMINIUM

INLET HOLE -

ROTATION SPEED 100-200 rpm

WEIGHT 3 kg

CE | Atex  II 1 GD



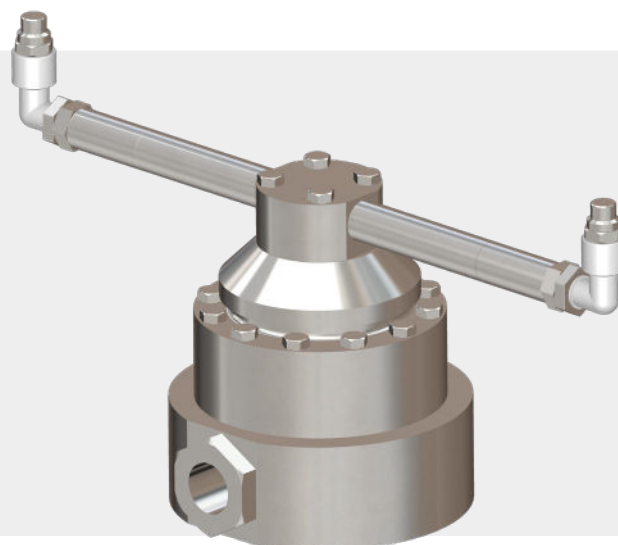
PW049-AAB

Acquamotor (water-driven)

PW060-LC self-rotating cleaning head with flow-rate priority and lateral discharge. It can operate at high or low rotation speed and can wash using 2, 3 or 4 spray arms of various lengths and curves at different angles, as per customer requirements.

APPLICATIONS

- Front-facing cleaning
- Car washes
- Train wash systems
- Construction vehicle cleaning
- Conveyor belt cleaning

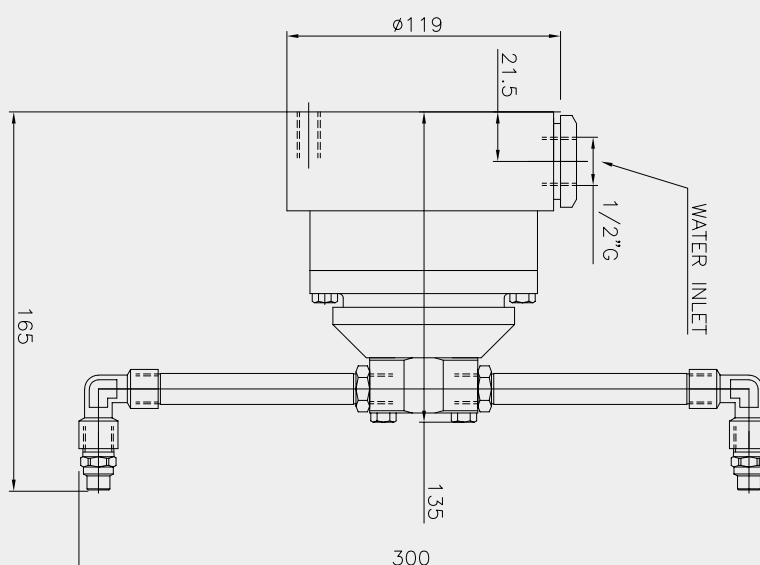


PW060-LC

TECHNICAL SPECIFICATIONS

FLOW RATE	8 - 60 l/min
MAX PRESSURE	200 bar
MAX TEMPERATURE	90 °C
WATER INLET	1/2"
NOZZLES	1/4" NPT
MATERIALS	Gaskets: NBR - EPDM - VITON
	AISI 316 - ALUMINIUM
INLET HOLE	Variable depending on the spray arm configuration
ROTATION SPEED	20-120 rpm
WEIGHT	3 kg

CE | Atex  II 1 GD



PW060-LC

Acquamotor (water-driven)

PW060-SL_CF/SF self-rotating cleaning head with flow-rate priority with or without coaxial discharge filter. Has low rotation speed features and can operate using 2, 3 or 4 spray arms of various lengths and curves at different angles, as per customer requirements.

APPLICATIONS

- Front-facing cleaning
- Car washes
- Train wash systems
- Construction vehicle cleaning
- Conveyor belt cleaning

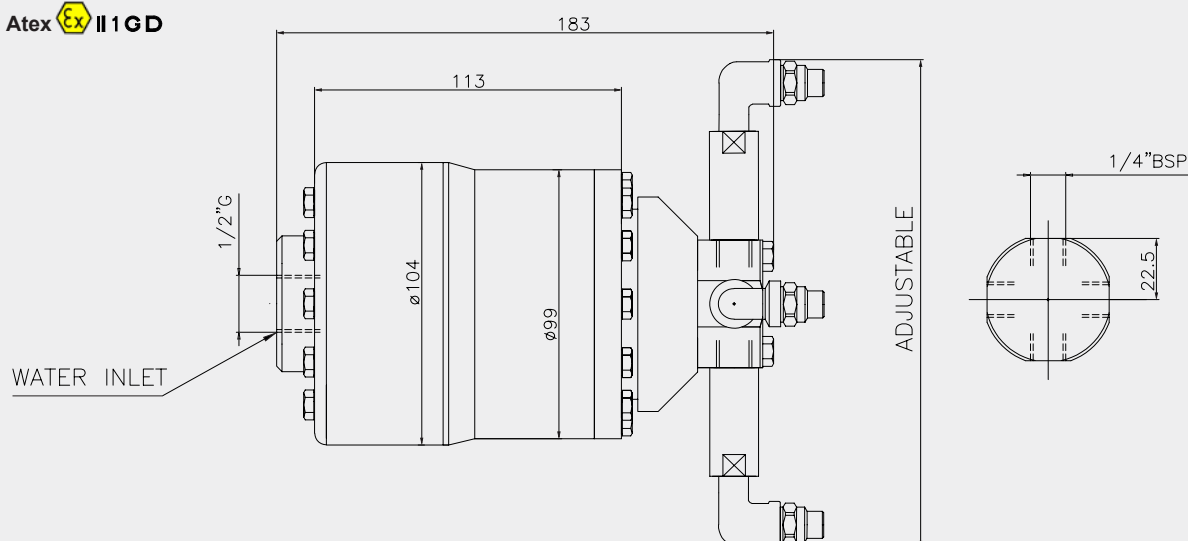


PW060-SL_SF

TECHNICAL SPECIFICATIONS

FLOW RATE	8 - 60 l/min
MAX PRESSURE	200 bar
MAX TEMPERATURE	90 °C
FILTER	700 micron
NOZZLES	1/4" NPT
MATERIALS	Gaskets: NBR - EPDM - VITON AISI 316
INLET HOLE	Variable depending on the spray arm configuration
ROTATION SPEED	5-16 rpm
WEIGHT	7.1 kg

CE | Atex Ex II 1 GD



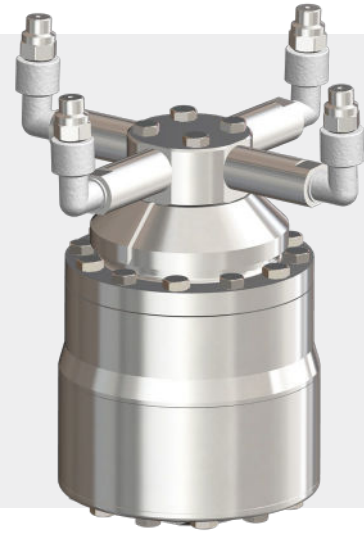
PW060-SL

Acquamotor (water-driven)

PW060-SP_CF/SF self-rotating cleaning head with flow-rate priority with or without coaxial discharge filter. Has high rotation speed features and can operate using 2, 3 or 4 spray arms of various lengths and curves at different angles, as per customer requirements.

APPLICATIONS

- Front-facing cleaning
- Car washes
- Train wash systems
- Construction vehicle cleaning
- Conveyor belt cleaning

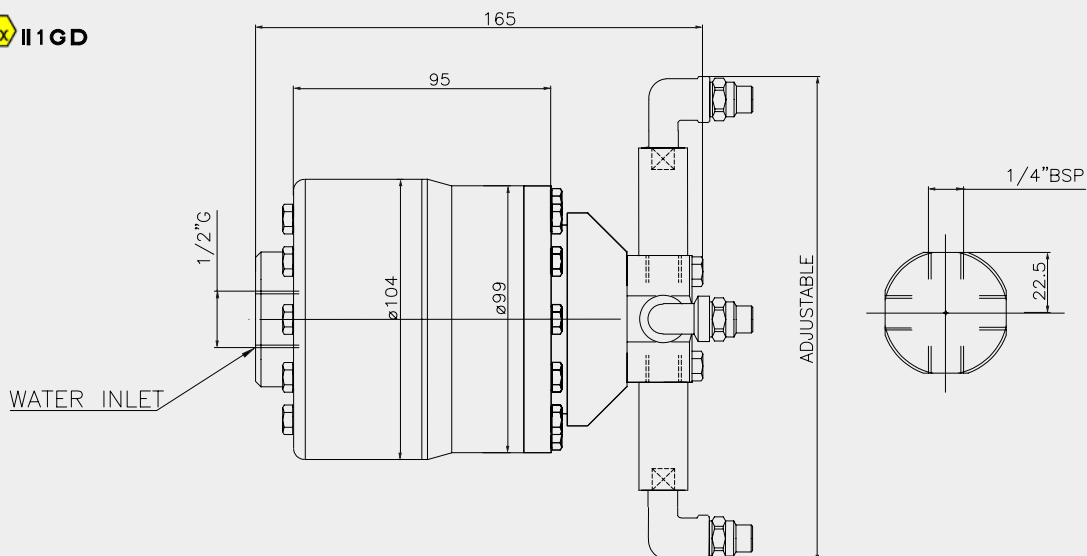


PW060-SP_SF

TECHNICAL SPECIFICATIONS

FLOW RATE	8 - 60 l/min
MAX PRESSURE	200 bar
MAX TEMPERATURE	90 °C
FILTER	700 micron
NOZZLES	1/4" NPT
MATERIALS	Gaskets: NBR - EPDM - VITON AISI 316
INLET HOLE	Variable depending on the spray arm configuration
ROTATION SPEED	30-100 rpm
WEIGHT	7.1 kg

CE | Atex | II 1 GD



PW060-SP

Acquamotor (water-driven)

PW200-SL/SP_CF self-rotating cleaning head with flow-rate priority, filter and coaxial discharge. Has low rotation speed features and can operate using 2, 3 or 4 spray arms of various lengths and curves at different angles, as per customer requirements.

APPLICATIONS

- Front-facing cleaning
- Car washes
- Train wash systems
- Construction vehicle cleaning
- Conveyor belt cleaning

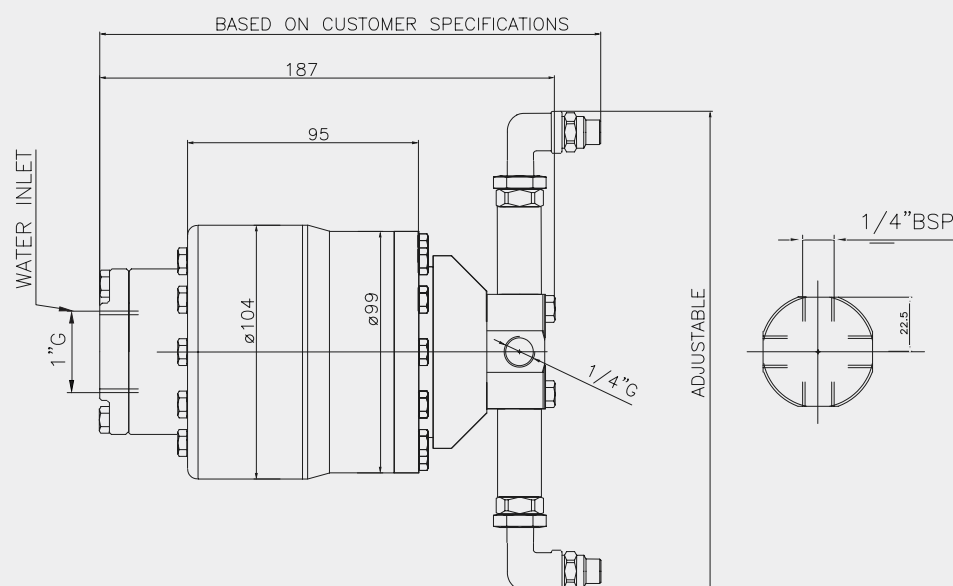


PW200-SP_CF

TECHNICAL SPECIFICATIONS

FLOW RATE	60 - 200 l/min
MAX PRESSURE	200 bar
MAX TEMPERATURE	90 °C
FILTER	700 micron
NOZZLES	1/4" NPT
MATERIALS	Gaskets: NBR - EPDM - VITON AISI 316
INLET HOLE	Variable depending on the spray arm configuration
ROTATION SPEED	PW200-SL_CF 8-18 rpm PW200-SP_CF 70-100 rpm
WEIGHT	7.1 kg

CE | Atex Ex II 1 GD



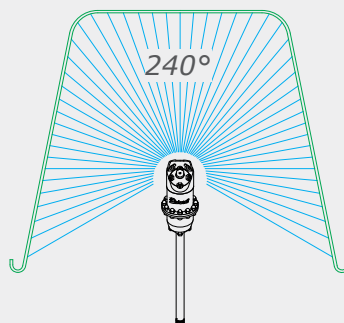
PW200-SL/SP

Acquamotor (water-driven)

SW053A self-rotating cleaning head with flow-rate priority, filter and coaxial discharge. Versions available with 2-3-4 nozzles.

APPLICATIONS

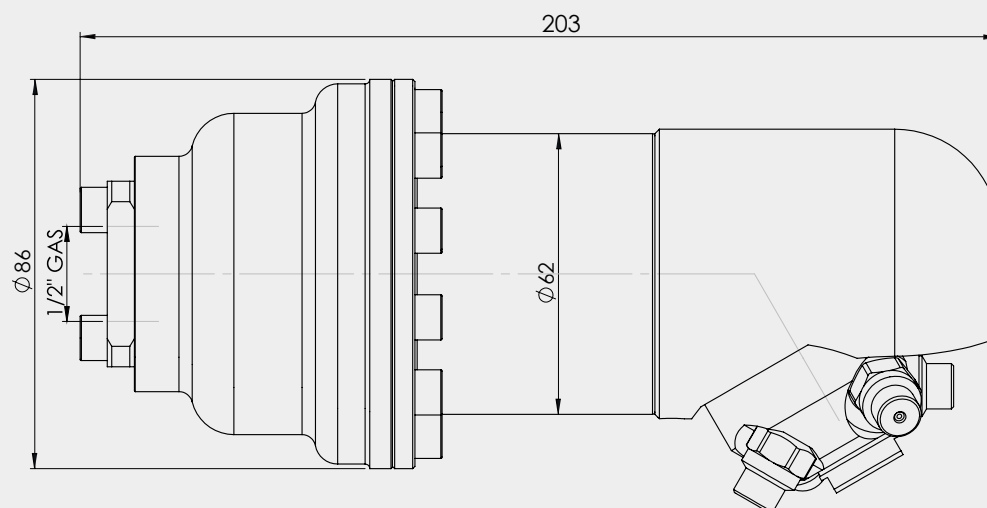
- Cleaning of open containers
- Cleaning of crates
- Cleaning of bins
- Cleaning of machinery interiors



SW053A

TECHNICAL SPECIFICATIONS

FLOW RATE	10 - 60 l/min
MAX PRESSURE	150 bar
MAX TEMPERATURE	90 °C
FILTER	700 micron
NOZZLES	1/8" NPT
MATERIALS	Gaskets: NBR - EPDM - VITON AISI 316 - ALUMINIUM - BRASS
INLET HOLE	Ø88 mm
ROTATION SPEED	80-120 rpm
FULL CYCLE DURATION	20-30 sec
SPRAY COVERAGE ANGLE	240°
WEIGHT	3 kg



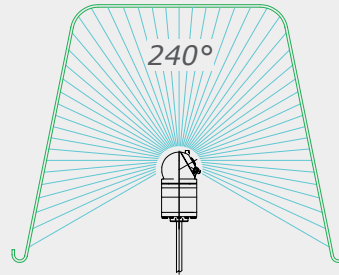
SW053A

Acquamotor (water-driven)

SW060A-CF_SF self-rotating head with flow-rate priority with or without filter and co-axial discharge.
Versions available with 2-4 nozzles.

APPLICATIONS

- Cleaning of bins

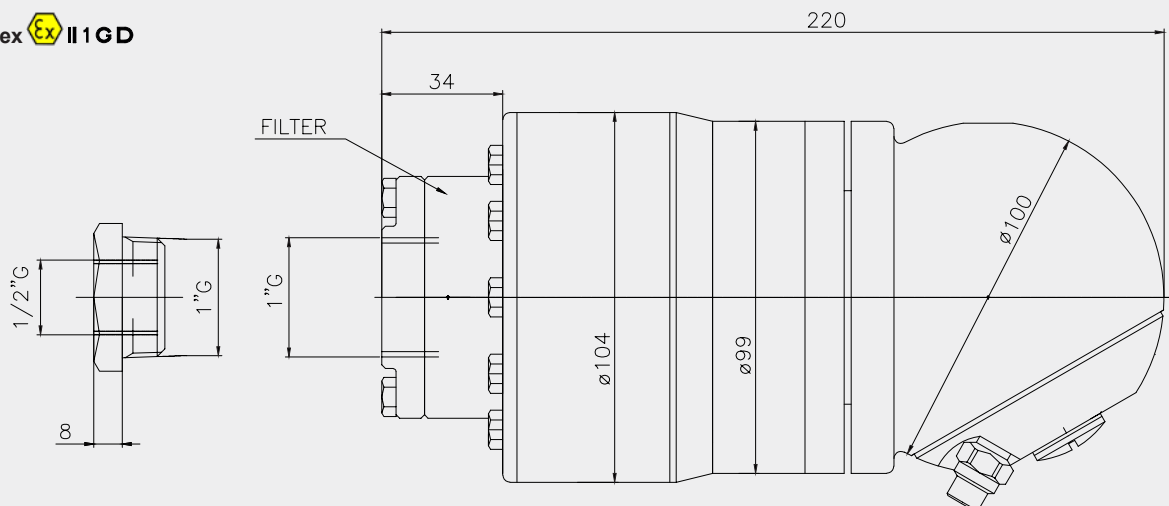


SW060A-CF

TECHNICAL SPECIFICATIONS

MAX FLOW RATE	60 l/min
MAX PRESSURE	200 bar
MAX TEMPERATURE	90 °C
FILTER	700 micron
NOZZLES	1/8" G
MATERIALS	Gaskets: NBR - EPDM - VITON AISI 316 - ALUMINIUM
INLET HOLE	Ø100 mm
ROTATION SPEED	80-120 rpm
FULL CYCLE DURATION	20-30 sec
SPRAY COVERAGE ANGLE	240°
WEIGHT	5.5 kg

CE | Atex  II 1 GD



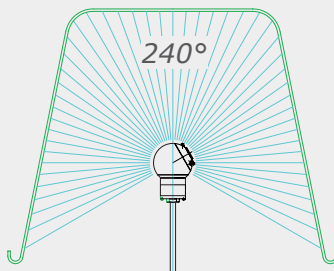
SW060A

Acquamotor (water-driven)

SW120A-CF self-rotating head with flow-rate priority, filter and coaxial discharge. Versions available with 2-4 nozzles.

APPLICATIONS

- Cleaning of bins

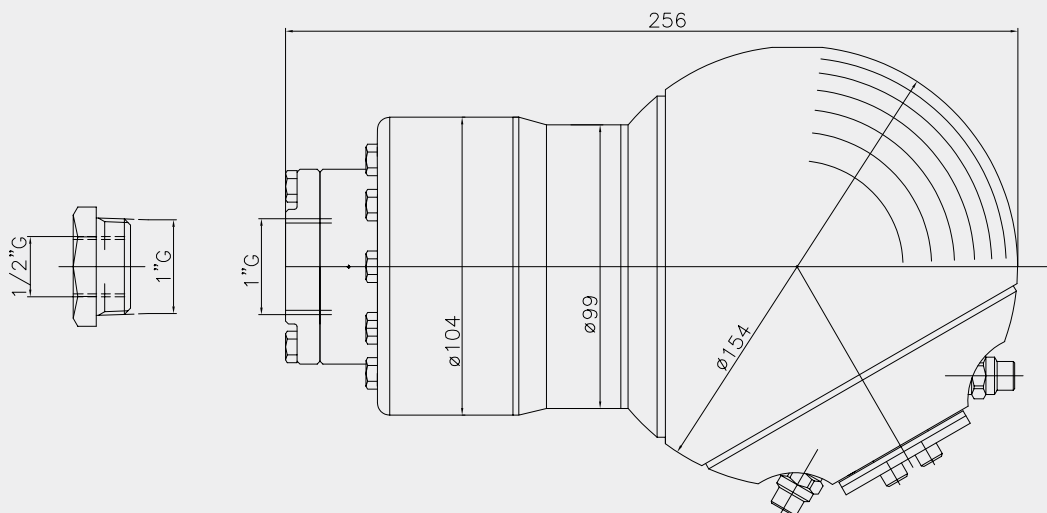


SW120A-CF

TECHNICAL SPECIFICATIONS

MAX FLOW RATE	120 l/min
MAX PRESSURE	200 bar
MAX TEMPERATURE	90 °C
FILTER	700 micron
NOZZLES	1/4" G
MATERIALS	Gaskets: NBR - EPDM - VITON AISI 316 - ALUMINIUM
INLET HOLE	Ø160 mm
ROTATION SPEED	80-120 rpm
FULL CYCLE DURATION	20-30 sec
SPRAY COVERAGE ANGLE	240°
WEIGHT	10.5 kg

CE



SW120A-CF

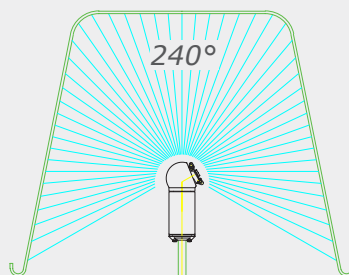
Acquamotor (water-driven)

SW190A stainless steel self-rotating cleaning head with flow-rate priority, filter and coaxial discharge.

Versions available with 2-3-4 nozzles.

APPLICATIONS

- Pharmaceutical/food/cosmetics/chemical industry
- Cleaning of open containers
- Cleaning of bins

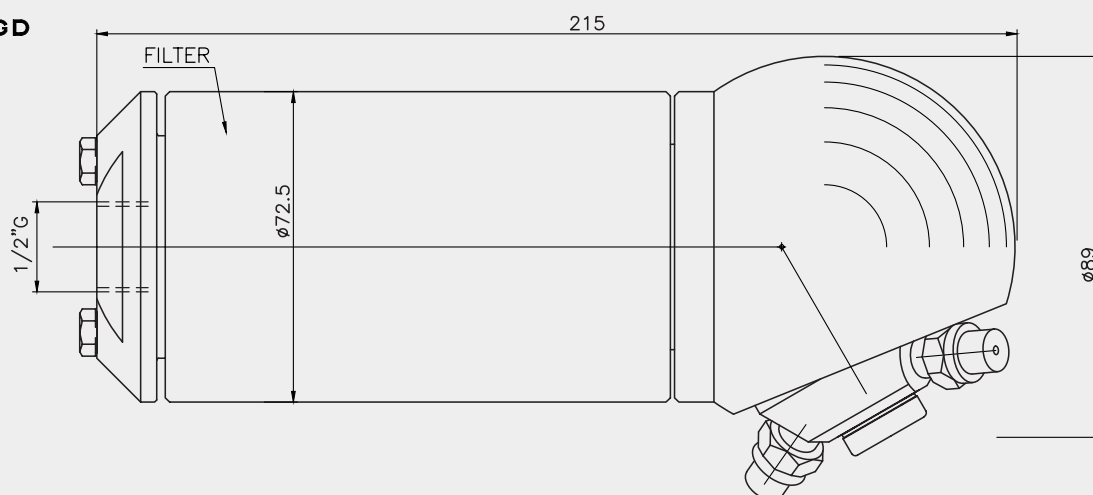


SW190A

TECHNICAL SPECIFICATIONS

FLOW RATE	15 - 60 l/min
MAX PRESSURE	200 bar
MAX TEMPERATURE	90 °C
FILTER	700 micron
NOZZLES	1/8" NPT
MATERIALS	Gaskets: NBR - EPDM - VITON AISI 316
INLET HOLE	-
ROTATION SPEED	80-120 rpm
FULL CYCLE DURATION	20-30 sec
SPRAY COVERAGE ANGLE	240°
WEIGHT	5 kg

CE | Atex  II 1 GD



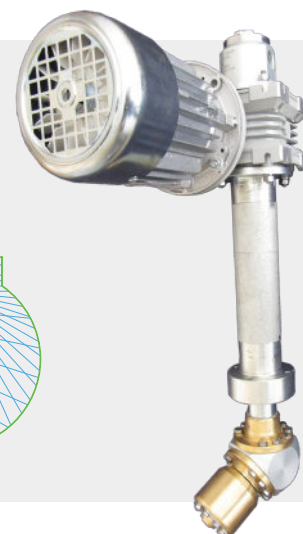
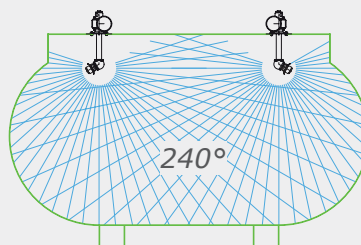
SW190A

Electrical

XC070E-PT is a sector cleaning head. Designed with axial discharge, it has an automatically opening nozzle protection system. Rotation is driven by a 400 V electric motor.

APPLICATIONS

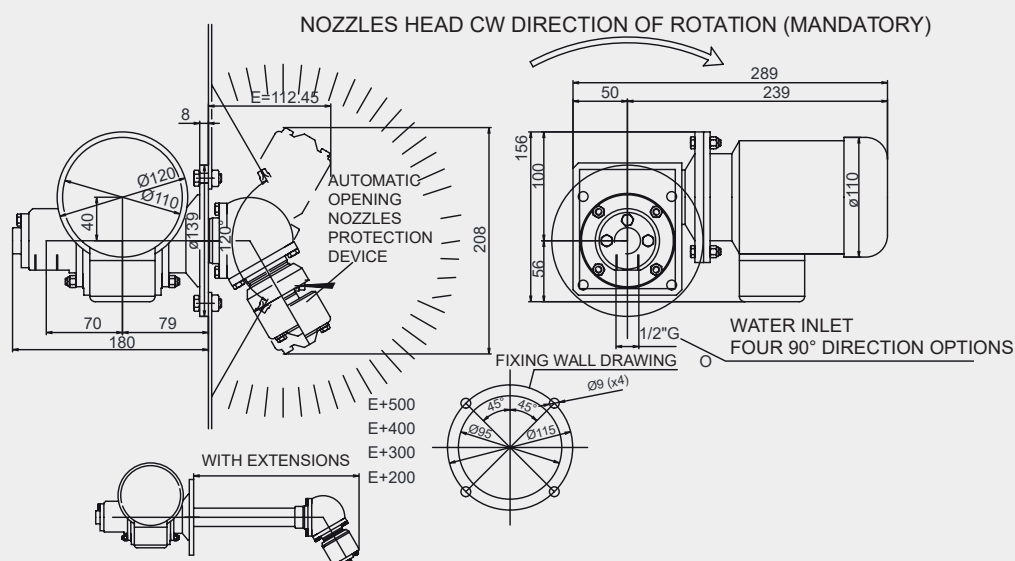
- 240° sector cleaning for concrete mixers



XC070E-PT

TECHNICAL SPECIFICATIONS

MAX FLOW RATE	60 l/min
MAX PRESSURE	200 bar
MAX TEMPERATURE	90 °C
NOZZLES	2 or 4 special 1/8"
MATERIALS	Gaskets: NBR AISI 316 - BRASS OT58 (CW614N) - ALUMINIUM
INLET HOLE	Ø160 mm
ELECTRIC MOTOR	400 V - 0.09 kW
ROTATION SPEED	18 rpm
SPRAY COVERAGE ANGLE	240°
WEIGHT	12.5 kg



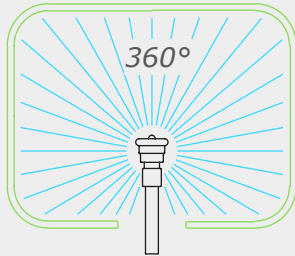
XC070E-PT

Acquamotor (water-driven)

RT is a cleaning head driven by the reactive force of the cleaning fluid itself. Rotation is enabled by a ball bearing track made of AISI 316 stainless steel.

APPLICATIONS

- Tank washing
- Mixer washing

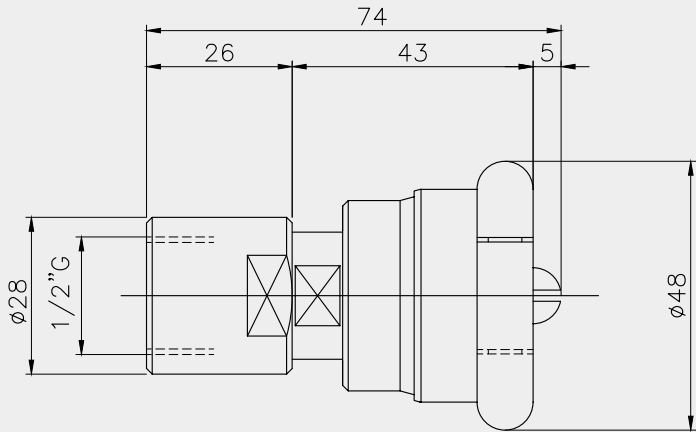


RT

TECHNICAL SPECIFICATIONS

FLOW RATE/PRESSURE	RT225	I/min	15	21	27	32,5	35	
		bar	2	4	6	8	10	
	RT235	I/min	18	25	32	36	41	
		bar	2	4	6	8	10	
	RT255	I/min	20,5	40	53	63	75	83
		bar	1	2	4	6	8	10
WATER INLET		1/2" G						
MAX TEMPERATURE		90 °C						
MATERIAL		AISI 316						
INLET HOLE		Ø49 mm						
WEIGHT		0.285 kg						

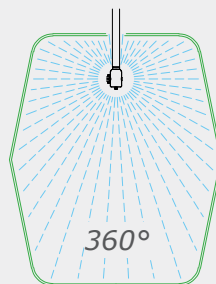
CE | Atex  II 1 GD



XM015 self-rotating or motorised rotating head without oil or grease. Cleaning is carried out at low pressure with 2 or 4 nozzles. Lateral discharge for the electrical and pneumatic version, and coaxial discharge for the water-driven version (aquamotor).

APPLICATIONS

- Internal cleaning of small containers

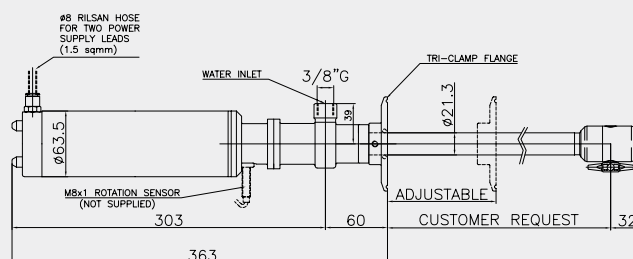


XM015-P

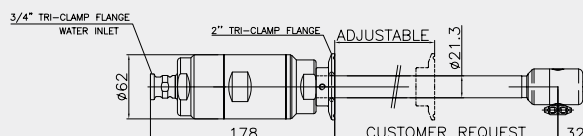
TECHNICAL SPECIFICATIONS

	XM015-A	XM015-E	XM015-P
FLOW RATE	3 - 15 l/min	3 - 15 l/min	3 - 15 l/min
MAX PRESSURE	10 bar	10 bar	10 bar
MAX TEMPERATURE	90 °C	90 °C	90 °C
NOZZLES	M6	M6	M6
MATERIALS	Gaskets: EPDM - Bushes: PEEK AISI 316		
INLET HOLE	2 x Ø57 mm nozzles - 4 x Ø66 mm nozzles		
FULL CYCLE DURATION	1 min at 20 rpm	1 min	1 min at 3 bar air pressure
MOTOR	Water-driven motor	Electric motor: 24V DC	Pneumatic motor: 1 to 6 bar
WEIGHT	~7.5 kg	7.5 kg	7.5 kg

CE XM015-E

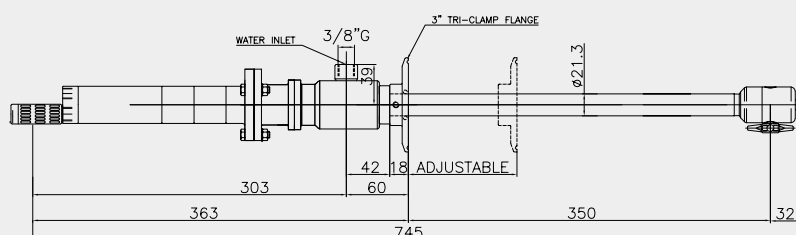


CE XM015-A



CE | Atex Ex II 1 GD

XM015-P

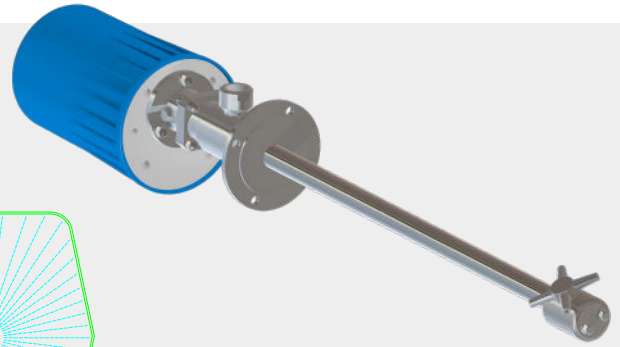
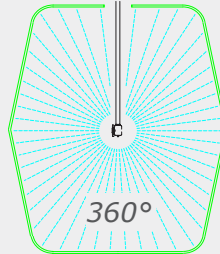


XM015

XM030 motorised rotating head without oil or grease with lateral discharge. Cleaning is carried out at low pressure with 2 or 4 nozzles.

APPLICATIONS

- Internal cleaning of small tanks
- Cleaning of bins



XM030-E

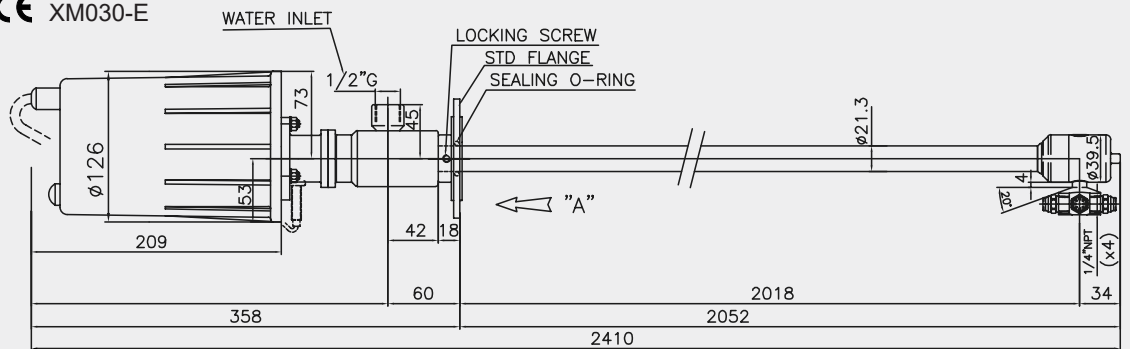
TECHNICAL SPECIFICATIONS

XM030-E

XM030-P

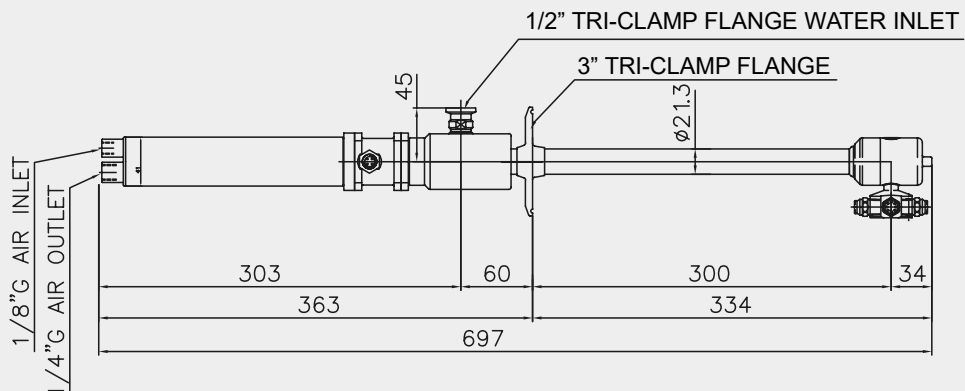
FLOW RATE	3 - 30 l/min	3 - 30 l/min
MAX PRESSURE	10 bar	10 bar
MAX TEMPERATURE	90 °C	90 °C
NOZZLES	1/4" NPT	1/4" NPT
MATERIALS	Gaskets: EPDM - Bushes: PEEK AISI 316	
INLET HOLE	2 x Ø69 mm nozzles - 4 x Ø89 mm nozzles	
FULL CYCLE DURATION	2 min	1 min at 3 bar air pressure
MOTOR	Available electric motors: 24V AC/DC 0.30 A 48V 50Hz 1ph 1.15 A 230V 50Hz 1ph 0.23 A 400V 50Hz 3ph 0.10 A	Pneumatic motor: 1 to 6 bar
WEIGHT	7.5 kg	7.5 kg

CE XM030-E



CE Atex II 1 GD

XM030-P

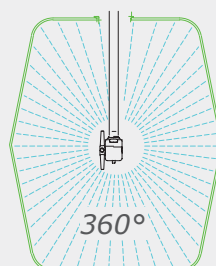


XM030

XM060 self-rotating or motorised rotating head without oil or grease. Cleaning is carried out at low pressure with 2 or 4 nozzles. Lateral discharge for the electrical and pneumatic version, and coaxial discharge for the water-driven version (acquamotor).

APPLICATIONS

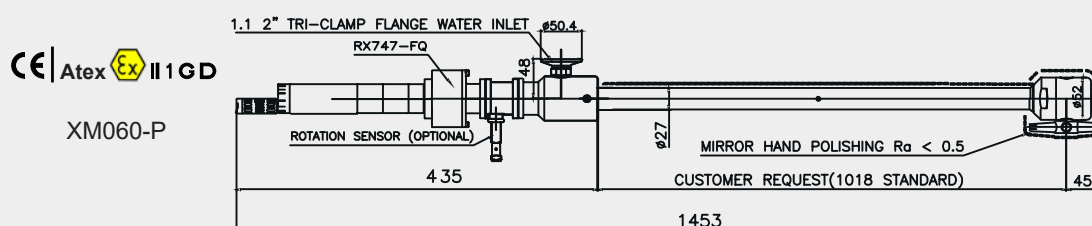
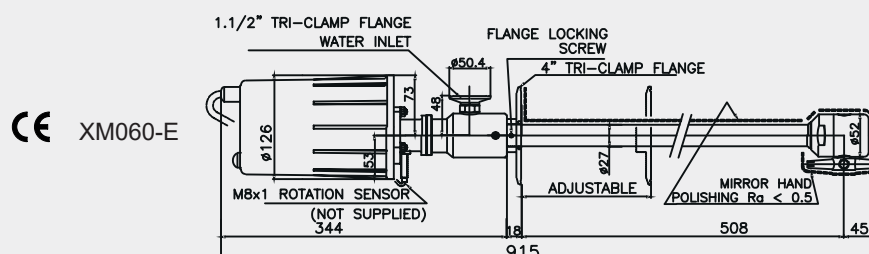
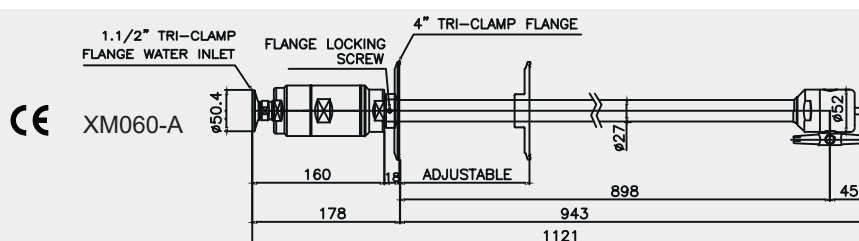
- Internal cleaning of small tanks
- Cleaning of bins
- Cleaning of medium to large containers



XM060-A



TECHNICAL SPECIFICATIONS	XM060-A	XM060-E	XM060-P
MAX FLOW RATE	80 l/min	80 l/min	80 l/min
MAX PRESSURE	10 bar	10 bar	10 bar
MAX TEMPERATURE	90 °C	90 °C	90 °C
NOZZLES	M12x1	M12x1	M12x1
MATERIALS	Gaskets: EPDM - Bushes: PEEK AISI 316		
INLET HOLE	Ø120 mm		
FULL CYCLE DURATION	1.5 min at 20 rpm	1.4 min	0.6 min at 3 bar air pressure
MOTOR	Water-driven motor	Available electric motors: 24V AC/DC 0.30 A 48V 50Hz 1ph 1.15 A 230V 50Hz 1ph 0.23 A 400V 50Hz 3ph 0.10 A	Pneumatic motor: 1 to 6 bar
WEIGHT	7.5 kg	7.5 kg	7.5 kg



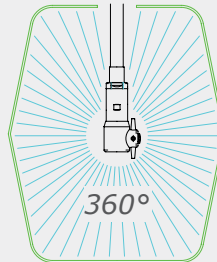
XM060

Acquamotor (water-driven)

XM100-A water motor cleaning head without oil and grease made in full AISI 316L, equipped with 2 or 4 nozzles, suitable for a 360° cleaning in application where it's required low pressure and high flow.

APPLICATIONS

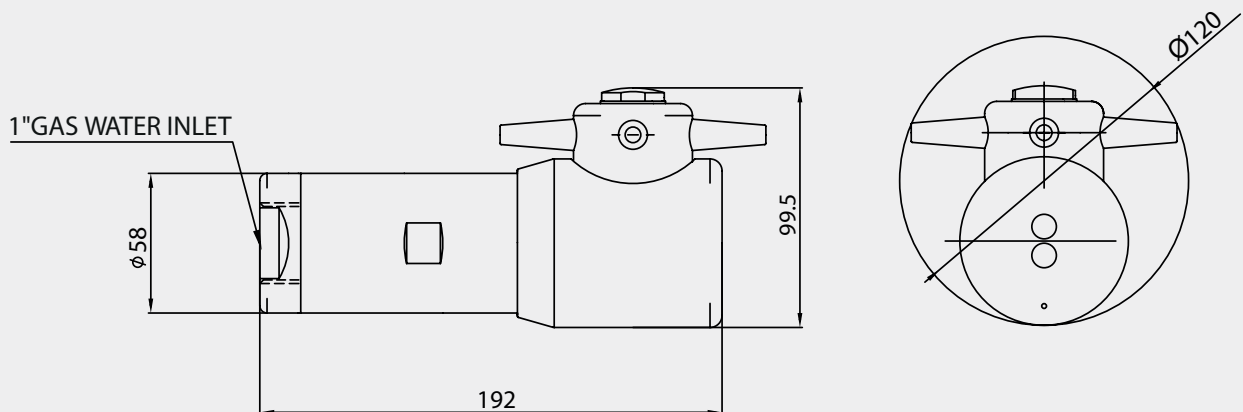
Tank and vessel cleaning in food, pharma and beverage industry.



XM100-A

TECHNICAL SPECIFICATIONS

FLOW	20 - 120 l/min
PRESSURE	0,5 - 10 bar
MAX TEMPERATURE	90 °C
NOZZLES	M12x1
MATERIAL	Gaskets: EPDM - Bushing: PEEK AISI 316L
INLET HOLE	Ø120 mm
ROTATION SPEED	22÷32 rpm
FULL CYCLE	48 rotations
SPRAY COVERAGE ANGLE	360°
WEIGHT	3.1 Kg

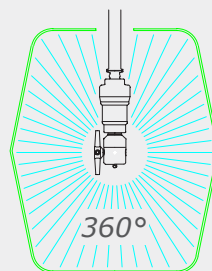


XM100-A

XM200 self-rotating or motorised rotating head without oil or grease. Cleaning is carried out at low pressure with 2 or 4 nozzles. Lateral discharge for the electrical and pneumatic version, and coaxial discharge for the water-driven version (acquamotor).

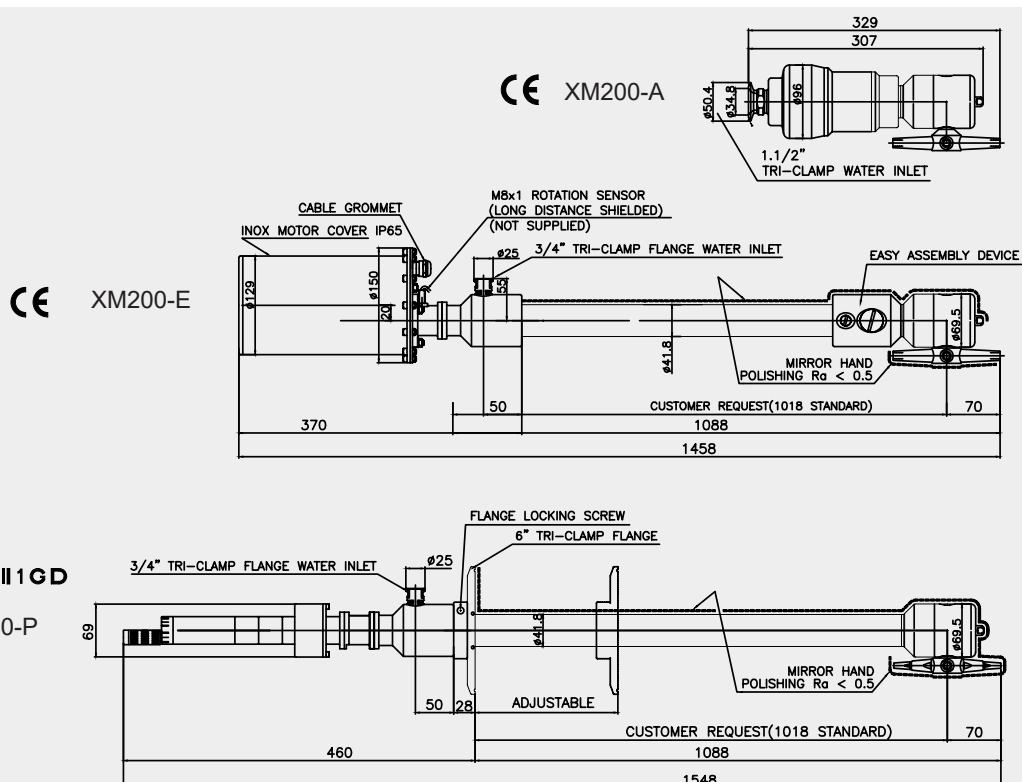
APPLICATIONS

- Internal cleaning of small tanks
- Cleaning of bins
- Cleaning of medium to large containers



XM200-A

TECHNICAL SPECIFICATIONS	XM200-A	XM200-E	XM200-P
FLOW RATE	3 - 200 l/min	3 - 200 l/min	3 - 200 l/min
MAX PRESSURE	10 bar	10 bar	10 bar
MAX TEMPERATURE	90 °C	90 °C	90 °C
NOZZLES	M16x1	M16x1	M16x1
MATERIALS	Gaskets: EPDM - Bushes: PEEK AISI 316		
INLET HOLE	Ø185 mm	Ø185 mm	Ø185 mm
FULL CYCLE DURATION	1 min at 20 rpm	1 min	1.5 min at 4 bar air pressure
MOTOR	Water-driven motor	Available electric motors: 24V AC/DC 0.30 A 48V 50Hz 1ph 1.15 A 230V 50Hz 1ph 0.23 A 400V 50Hz 3ph 0.10 A	Pneumatic motor: 1 to 6 bar
WEIGHT	-	7.5 kg	7.5 kg



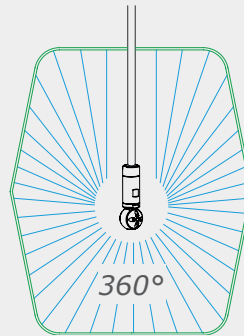
XM200

Acquamotor (water-driven)

IB200 is a self-rotating and self-braking cleaning head. The unique operating principle ensures uniform cleaning of the entire volume.
2 or 4 nozzles.

APPLICATIONS

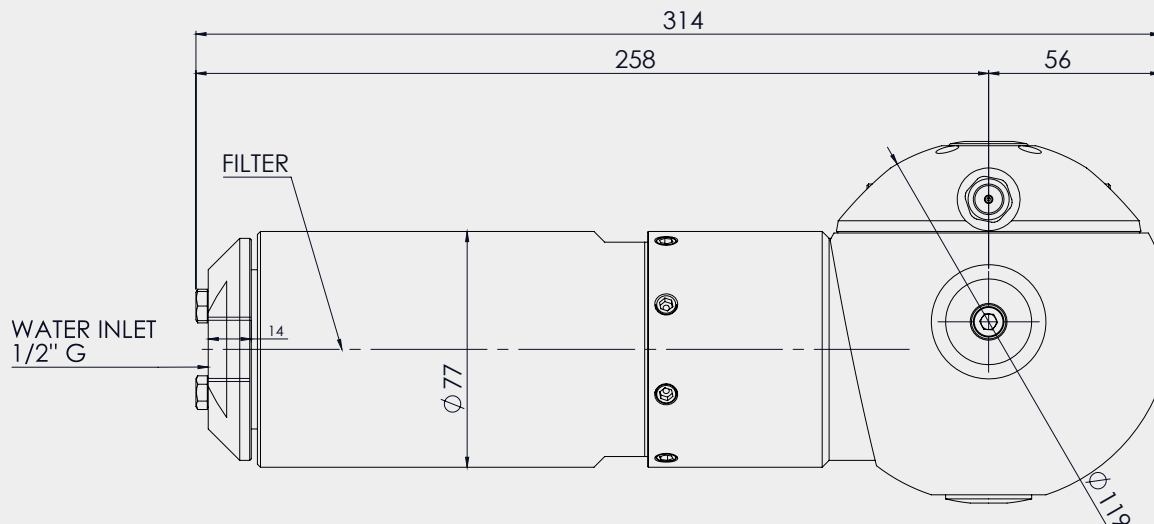
- Cleaning of medium/large tanks
- Cleaning of chemical industry tanks
- Cleaning of wine industry tanks and vats



IB200

TECHNICAL SPECIFICATIONS

MAX FLOW RATE	60 l/min
MAX PRESSURE	200 bar
MAX TEMPERATURE	90 °C
FILTER	700 micron
LUBRICATION	NO
NOZZLES	1/4" NPT
MATERIALS	Gaskets: NBR - EPDM - VITON AISI 316
INLET HOLE	Ø120 mm
FULL CYCLE DURATION	2.5-5 min
SPRAY COVERAGE ANGLE	360°
WEIGHT	5 kg



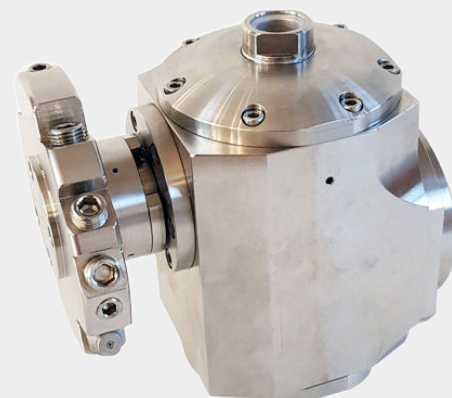
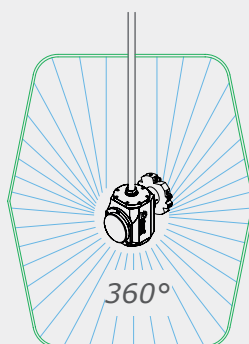
IB200

Acquamotor (water-driven)

FV020 is a self-rotating and self-braking cleaning head. The unique operating principle ensures uniform cleaning of the entire volume. 2 or 4 nozzles.

APPLICATIONS

- Cleaning of medium/large tanks
- Cleaning of chemical industry tanks
- Cleaning of wine industry tanks and vats



FV020

TECHNICAL SPECIFICATIONS

Version up to 200 bar

Version up to 400 bar

MAX FLOW RATE

200 l/min

60 l/min

MAX PRESSURE

200 bar

400 bar

MAX TEMPERATURE

90 °C

LUBRICATION

Silicone oil bath viscosity 20-100-350-5000

NOZZLES

1/4" G

INLET CONNECTION

1/2" G

SEALS

NBR - EPDM

360° CYCLE TIME

2-12 min

SPRAY COVERAGE ANGLE

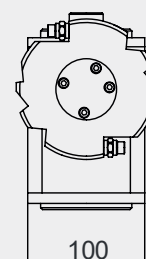
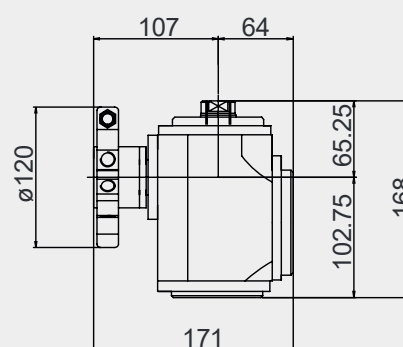
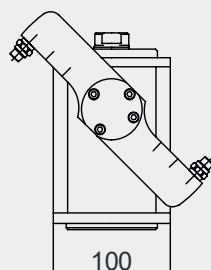
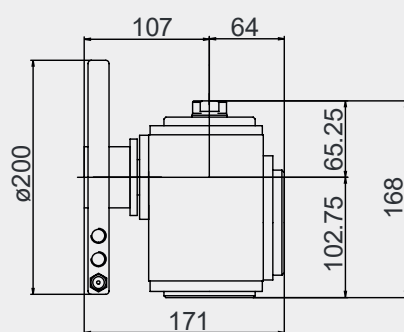
360°

MATERIAL/WEIGHT

ALUMINIUM 6082 (EN 573/UNI 3571) weight 5 kg

AISI 316 STAINLESS STEEL weight 10.5 kg

CE | Atex  II 1 GD



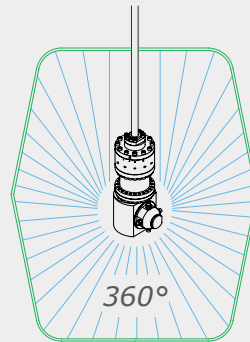
FV020

Acquamotor (water-driven)

MW586A is a self-rotating cleaning head with flow-rate priority without oil or grease. Cleaning is carried out with 2 or 4 nozzles. Equipped with a filter and with coaxial discharge, it is characterised by low speed rotation and can operate at very high pressures up to **500 bar**.

APPLICATIONS

- Internal cleaning of small tanks
- Cleaning of IBCs
- Cleaning of road tankers
- Cleaning of silos

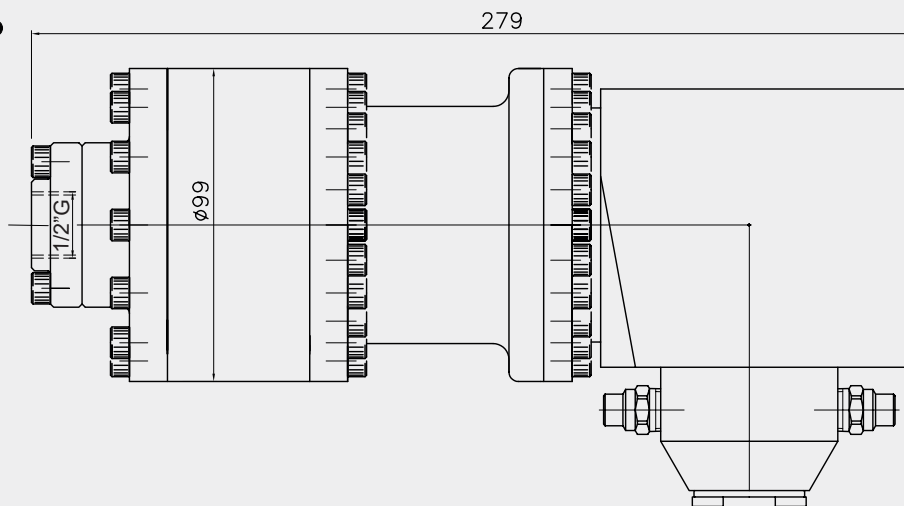


MW586A

TECHNICAL SPECIFICATIONS

MAX FLOW RATE	60 l/min
MAX PRESSURE	500 bar
MAX TEMPERATURE	90 °C
FILTER	700 micron
NOZZLES	1/4" NPT
MATERIALS	NBR - EPDM - VITON PTFE+CARBON FIBRE - AISI 316
INLET HOLE	Ø180 mm
ROTATION SPEED	5 to 16 rpm
SPRAY COVERAGE ANGLE	360°
WEIGHT	9.6 kg

CE | Atex Ex II 1 GD



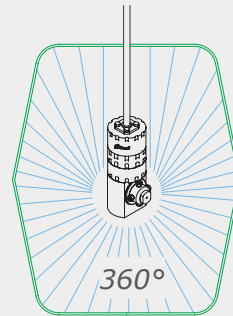
MW586A

Acquamotor (water-driven)

RW030A self-rotating cleaning head with flow-rate priority without oil or grease. Characterised by a low rotation speed, it is designed with coaxial discharge, comes equipped with a filter, and can be used with 2-4 nozzles, guaranteeing an effective wash cycle with 360° spray coverage.

APPLICATIONS

- Internal cleaning of tanks
- Internal cleaning of medium-sized vats

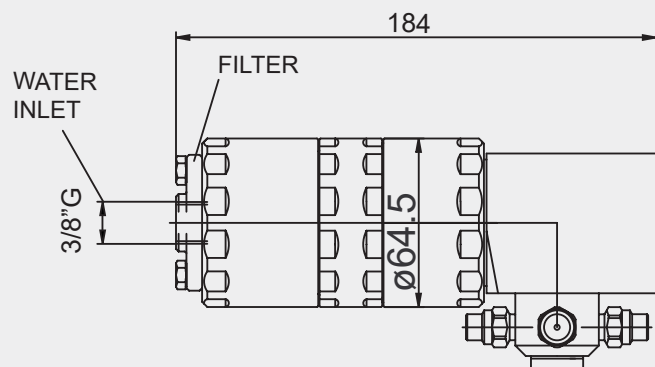
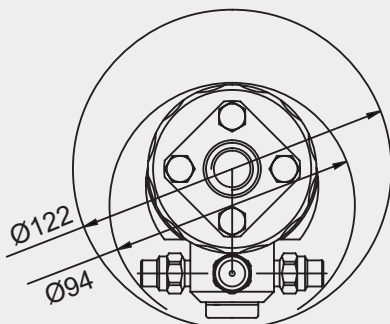


RW030A

TECHNICAL SPECIFICATIONS

FLOW RATE	10 - 30 l/min
MAX PRESSURE	150 bar
MAX TEMPERATURE	90 °C
FILTER	700 micron
NOZZLES	1/8" NPT
MATERIALS	Gaskets: NBR - EPDM - VITON AISI 316
INLET HOLE	Ø122 mm
ROTATION SPEED	15-25 rpm
SPRAY COVERAGE ANGLE	360°
WEIGHT	2.7 kg

CE | Atex II 1 GD



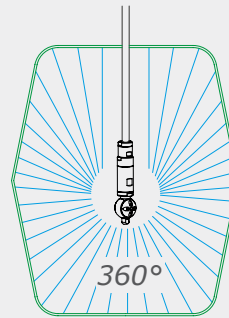
RW030A

Acquamotor (water-driven)

RW033A self-rotating cleaning head with flow-rate priority. Does not require oil or grease. Designed for use in a variety of areas of application. With its reduced dimensions, it can be introduced into restricted spaces. It requires minimal maintenance and can operate using 2 or 4 nozzles, guaranteeing effective 360° cleaning.

APPLICATIONS

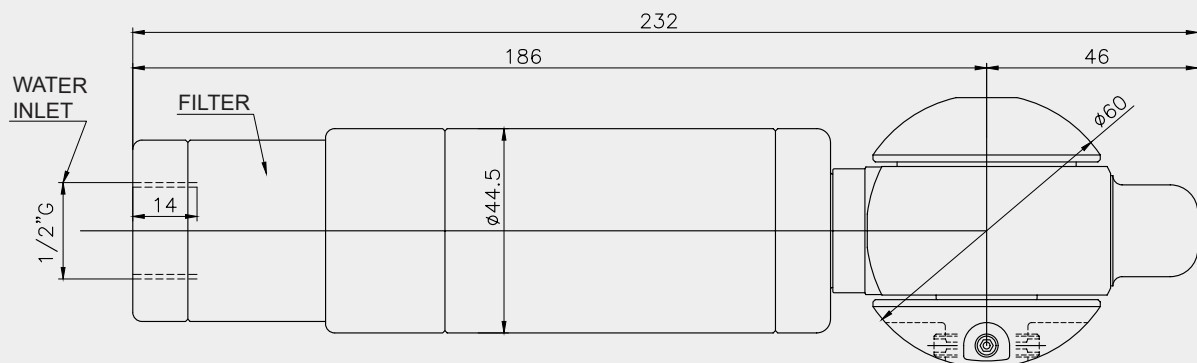
- Pharmaceutical/food/cosmetics/chemical industry
- Cleaning of containers, drums, small tanks and IBCs



RW033A

TECHNICAL SPECIFICATIONS

FLOW RATE	8 - 30 l/min
MAX PRESSURE	150 bar
MAX TEMPERATURE	90 °C
FILTER	700 micron
NOZZLES	M5
MATERIALS	Gaskets: NBR - EPDM - VITON AISI 316
INLET HOLE	Ø60 mm
ROTATION SPEED	15-25 rpm
SPRAY COVERAGE ANGLE	360°
WEIGHT	1.8 kg



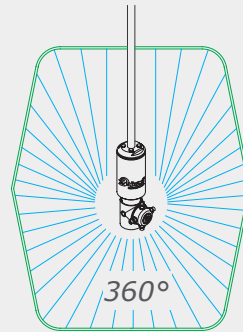
RW033A

Acquamotor (water-driven)

RW190A self-rotating cleaning head with flow-rate priority. Does not require oil or grease. Cleaning is carried out with 2 or 4 nozzles. Equipped with a filter and with coaxial discharge, it is characterised by low speed rotation.

APPLICATIONS

- Pharmaceutical/food/cosmetics/chemical industry
- Cleaning of IBCs
- Cleaning of tanks, reservoirs, large containers and industrial machinery interiors

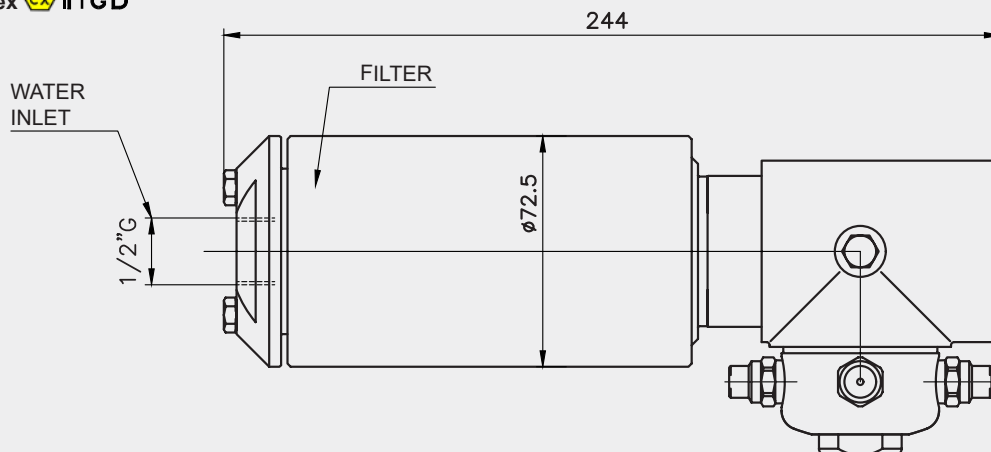


RW190A

TECHNICAL SPECIFICATIONS

MAX FLOW RATE	60 l/min
MAX PRESSURE	200 bar
MAX TEMPERATURE	90 °C
FILTER	700 micron
NOZZLES	1/4" NPT
MATERIALS	Gaskets: NBR - EPDM - VITON AISI 316
INLET HOLE	Ø123 mm
ROTATION SPEED	15-25 rpm
SPRAY COVERAGE ANGLE	360°
WEIGHT	5 kg

CE | Atex  II 1 GD

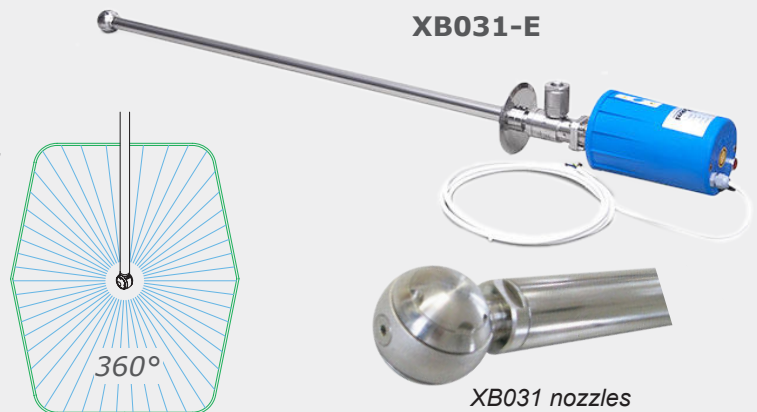


RW190A

XB031 self-rotating or motorised spherical rotating head without oil or grease. Cleaning is carried out at low pressure with 2 or 4 nozzles. With filter and lateral discharge for the electrical and pneumatic version, and coaxial discharge for the water-driven version (acquamotor).

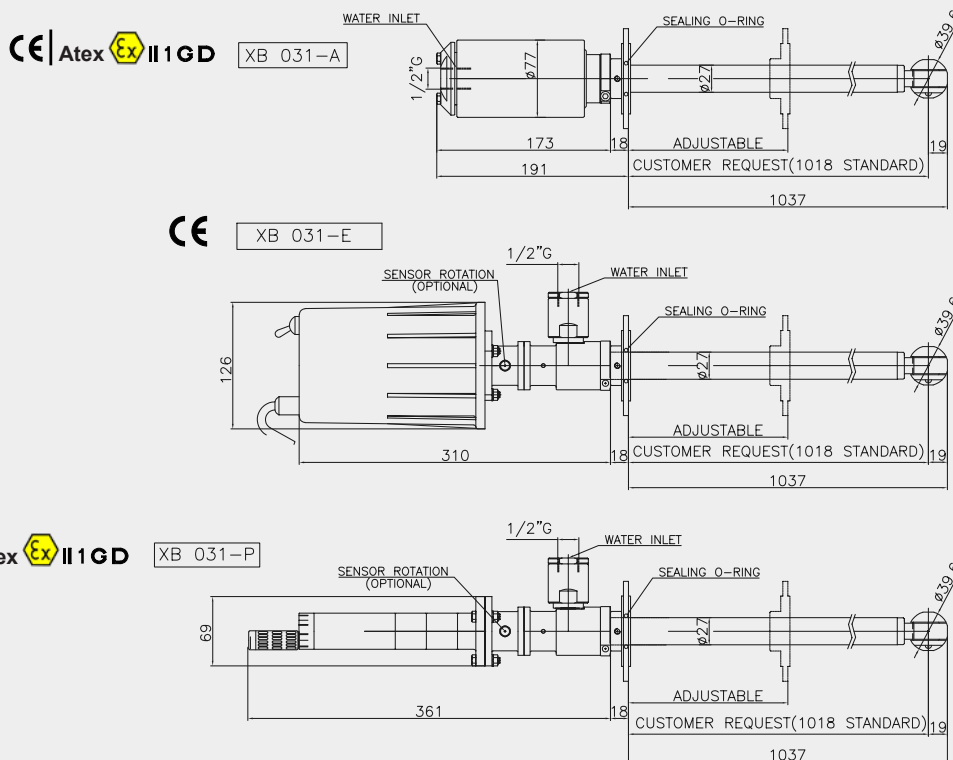
APPLICATIONS

- Cleaning of small tanks
- Bins and drums
- Cleaning of food machinery



TECHNICAL SPECIFICATIONS

	XB031-A	XB031-E	XB031-P
FLOW RATE	10 - 30 l/min	10 - 30 l/min	10 - 30 l/min
MAX PRESSURE	200 bar	200 bar	200 bar
MAX TEMPERATURE	90 °C	90 °C	90 °C
FILTER	700 micron	700 micron	700 micron
NOZZLES	Special XB031	Special XB031	Special XB031
MATERIALS	Gaskets: NBR - EPDM - VITON	NBR - EPDM - VITON	NBR - EPDM - VITON
	AISI 316	AISI 316	AISI 316
INLET HOLE	Ø40 mm	Ø40 mm	Ø40 mm
FULL CYCLE DURATION	1.2 min at 20 rpm	1.2 min at 20 rpm	1.2 min at 20 rpm
MOTOR	Water-driven motor	Available electric motors: 24V AC/DC 0.30 A 48V 50Hz 1ph 1.15 A 230V 50Hz 1ph 0.23 A 400V 50Hz 3ph 0.10 A	Pneumatic motor: 1 to 6 bar



XB031

XB061 self-rotating or motorised spherical rotating head without oil or grease. Cleaning is carried out with 2 or 4 nozzles. With filter and lateral discharge for the electrical and pneumatic version, and coaxial discharge for the water-driven version (acquamotor).

APPLICATIONS

- Cleaning of small tanks
- Bins and drums
- Cleaning of food machinery

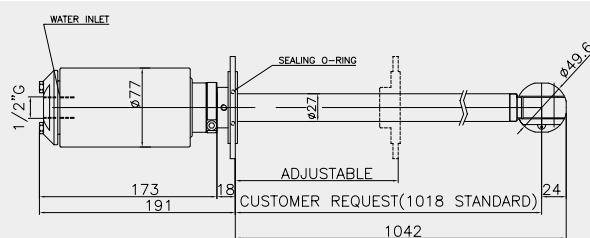


TECHNICAL SPECIFICATIONS

	XB061-A	XB061-E	XB061-P
FLOW RATE	10 - 60 l/min	10 - 60 l/min	10 - 60 l/min
MAX PRESSURE	200 bar	200 bar	200 bar
MAX TEMPERATURE	90 °C	90 °C	90 °C
FILTER	700 micron	700 micron	700 micron
NOZZLES	Special XB061	Special XB061	Special XB061
MATERIALS	Gaskets: NBR - EPDM - VITON	NBR - EPDM - VITON	NBR - EPDM - VITON
	AISI 316	AISI 316	AISI 316
INLET HOLE	Ø50 mm	Ø50 mm	Ø50 mm
FULL CYCLE DURATION	1.2 min at 20 rpm	1.2 min at 20 rpm	1.2 min at 20 rpm
MOTOR	Water-driven motor	Available electric motors: 24V AC/DC 0.30 A 48V 50Hz 1ph 1.15 A 230V 50Hz 1ph 0.23 A 400V 50Hz 3ph 0.10 A	Pneumatic motor: 1 to 6 bar

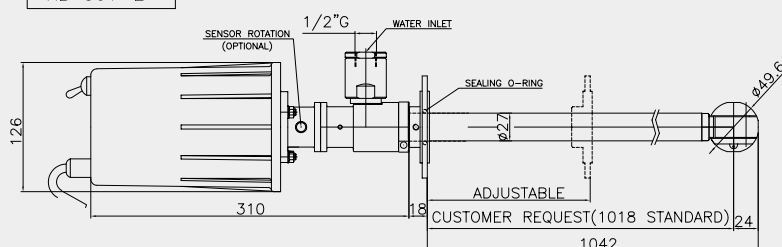
CE Atex Ex II 1GD

XB 061-A



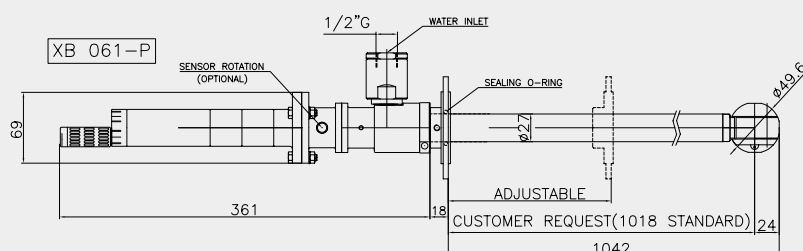
CE

XB 061-E



CE Atex Ex II 1GD

XB 061-P



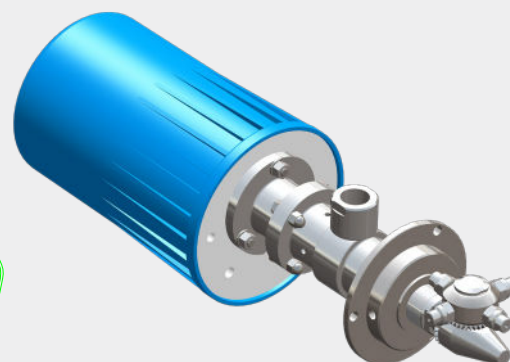
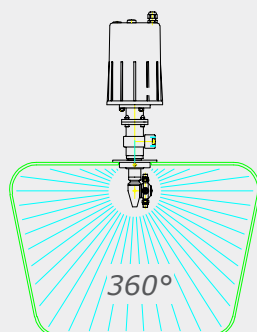
XB061

Electrical

XC035-EEB motorised rotating cleaning head without oil or grease. Cleaning is carried out with 2 or 4 nozzles. Lateral discharge.

APPLICATIONS

- Cleaning of food machinery



XC035-EEB

TECHNICAL SPECIFICATIONS

MAX FLOW RATE	60 l/min
---------------	----------

MAX PRESSURE	20 bar
--------------	--------

MAX TEMPERATURE	90 °C
-----------------	-------

NOZZLES	1/4" NPT
---------	----------

WATER INLET	1/2" G
-------------	--------

MATERIALS	
-----------	--

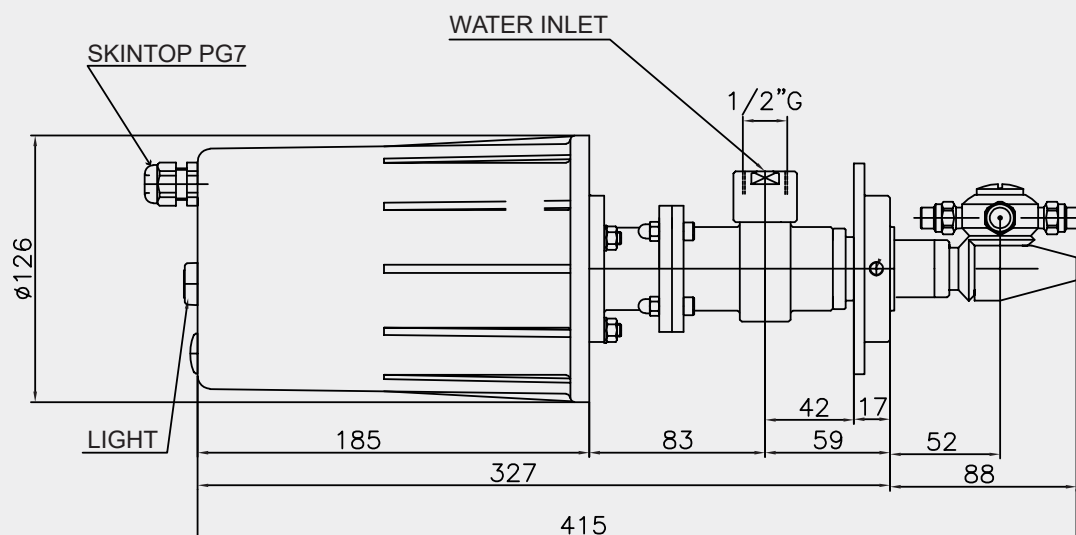
Gaskets: NBR-EPDM-VITON | Bushes: PEEK

AISI 316

INLET HOLE	Ø95 mm
------------	--------

ELECTRIC MOTOR	24V AC/DC
----------------	-----------

WEIGHT	7.5 kg
--------	--------

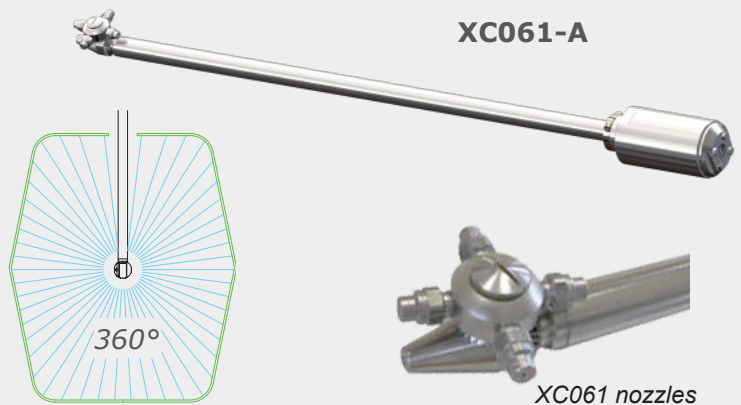


XC035-EEB

XC061 self-rotating or motorised rotating cleaning head without oil or grease. Cleaning is carried out with 2 or 4 nozzles. With filter and lateral discharge for the electrical and pneumatic version, and coaxial discharge for the water-driven version (acquamotor).

APPLICATIONS

- Cleaning of small tanks
- Bins and drums
- Cleaning of food machinery



TECHNICAL SPECIFICATIONS

	XC061-A	XC061-E	XC061-P
FLOW RATE	10 - 60 l/min	10 - 60 l/min	10 - 60 l/min
MAX PRESSURE	200 bar	200 bar	200 bar
MAX TEMPERATURE	90 °C	90 °C	90 °C
FILTER	700 micron	700 micron	700 micron
NOZZLES	1/8" NPT	1/8" NPT	1/8" NPT
MATERIALS	Gaskets: NBR - EPDM - VITON - KALREZ		
	AISI 316	AISI 316	AISI 316
INLET HOLE	Ø50 mm	Ø50 mm	Ø50 mm
FULL CYCLE DURATION	1.2 min at 20 rpm	1.2 min at 20 rpm	1.2 min at 20 rpm
MOTOR	Water-driven motor	Available electric motors: 24V AC/DC 0.30 A 48V 50Hz 1ph 1.15 A 230V 50Hz 1ph 0.23 A 400V 50Hz 3ph 0.10 A	Pneumatic motor: 1 to 6 bar

CE | Atex Ex II 1 GD

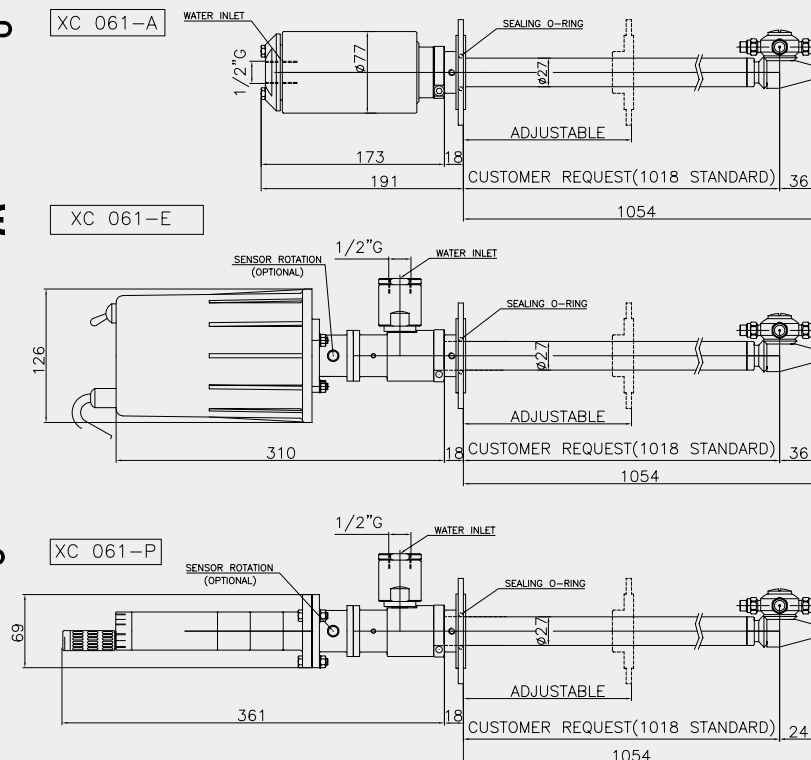
XC 061-A

CE

XC 061-E

CE | Atex Ex II 1 GD

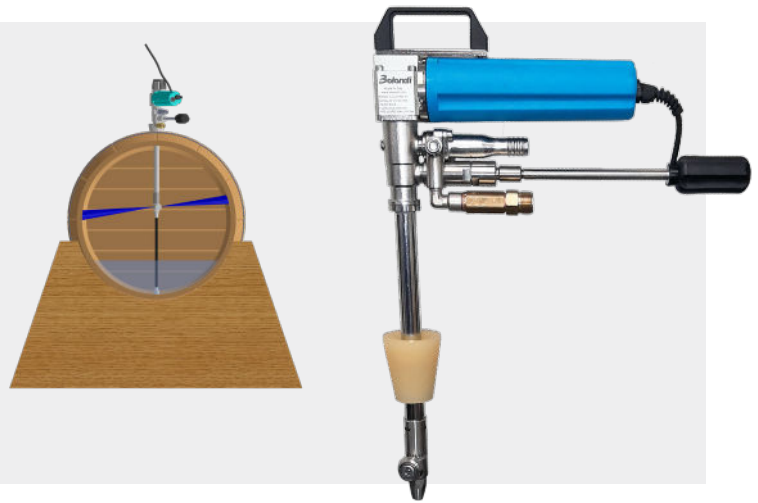
XC 061-P



XC061

Electrical

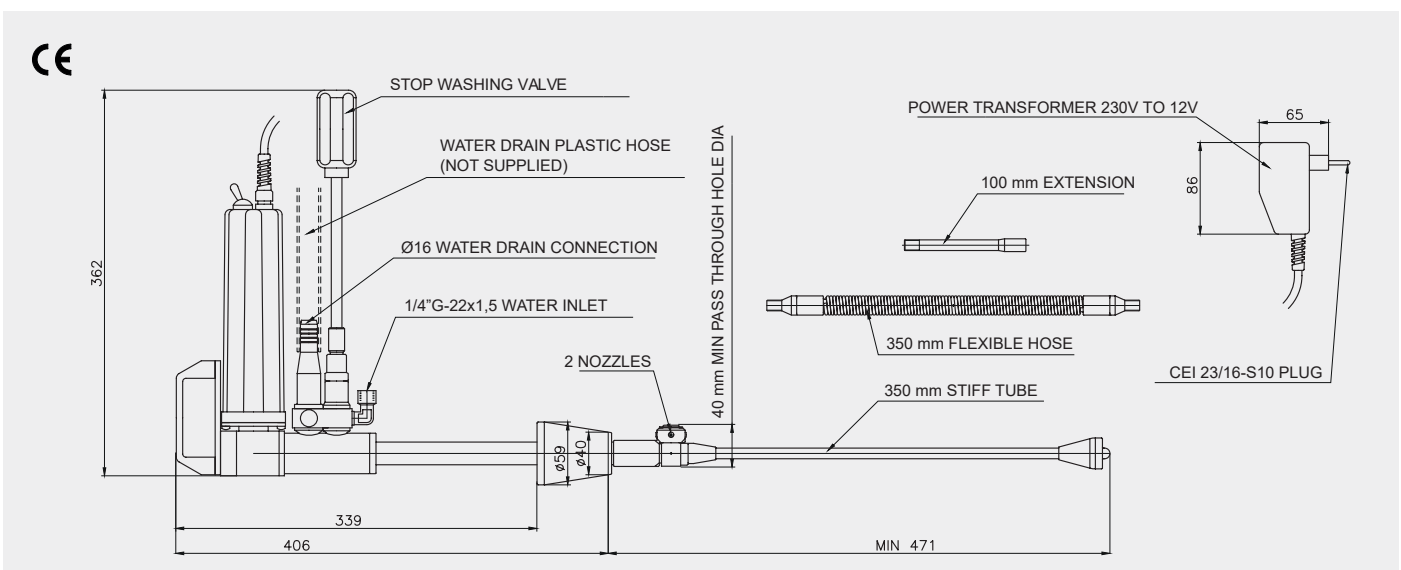
The **XC 020+Asp** cleaning head offers washing and suction at the same time, providing the ideal solution for the efficient washing of barriques and tonneaux due to its easy manoeuvrability, even in small spaces. Equipped with a 12V DC powered gearmotor and 10-metre power cable, it offers excellent flexibility during installation and use. The standard set-up allows washing and suction of up to 500 litres.



XC 020+Asp

TECHNICAL SPECIFICATIONS

FLOW RATE	15 - 25 l/min
MAX PRESSURE	120 bar
MAX TEMPERATURE	90 °C
FILTER	700 micron
NOZZLES	2
MATERIALS	Gaskets: NBR AISI 316
INLET HOLE	Ø40 mm
ROTATION SPEED	10 rpm
ELECTRIC MOTOR	12V DC
WEIGHT	3.1 kg



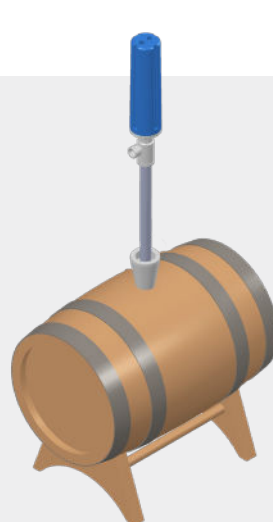
XC 020+Asp

Electrical

ROTY 018 is a self-rotating cleaning head without oil or grease.

APPLICATIONS

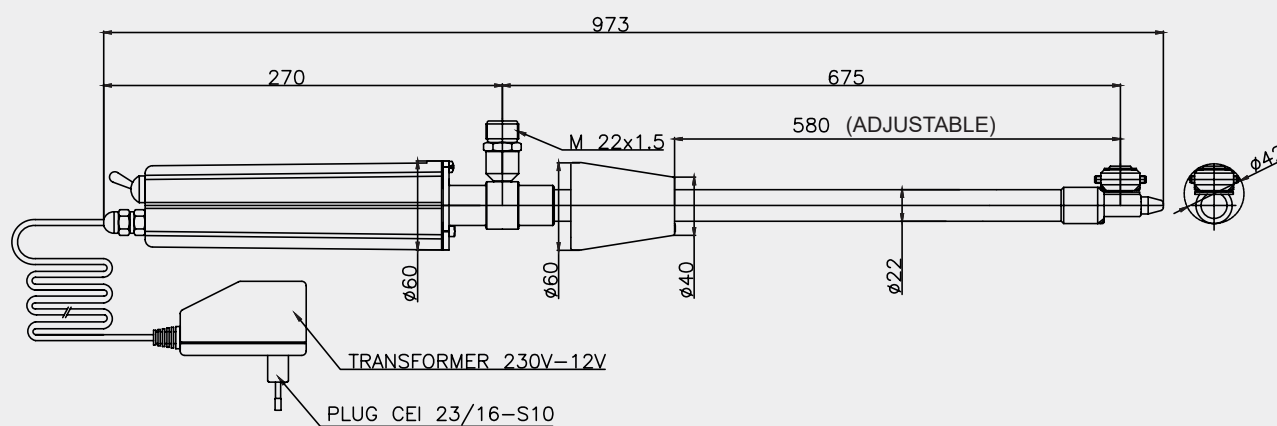
- Cleaning of barriques and small drums



ROTY 018

TECHNICAL SPECIFICATIONS

FLOW RATE	8 - 18 l/min
MAX PRESSURE	150 bar
MAX TEMPERATURE	90 °C
NOZZLES	2 x 1/4" NPT nozzles
MATERIALS	Gaskets: NBR AISI 316
INLET HOLE	Ø42 mm
ELECTRIC MOTOR	12V DC
POWER CABLE	10 m+transformer and plug
WEIGHT	3.1 kg

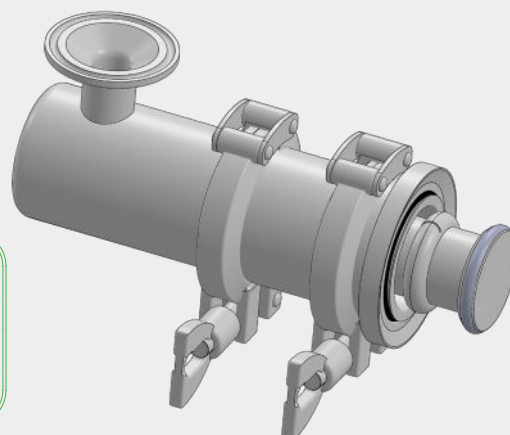
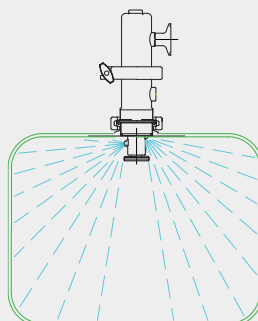


Acquamotor (water-driven)

RT611-AAA is a cleaning head whose movement is driven by the reactive force of the cleaning fluid itself.

APPLICATIONS

- Cleaning of food industry machinery interiors
- Cleaning of pharmaceutical industry pipework

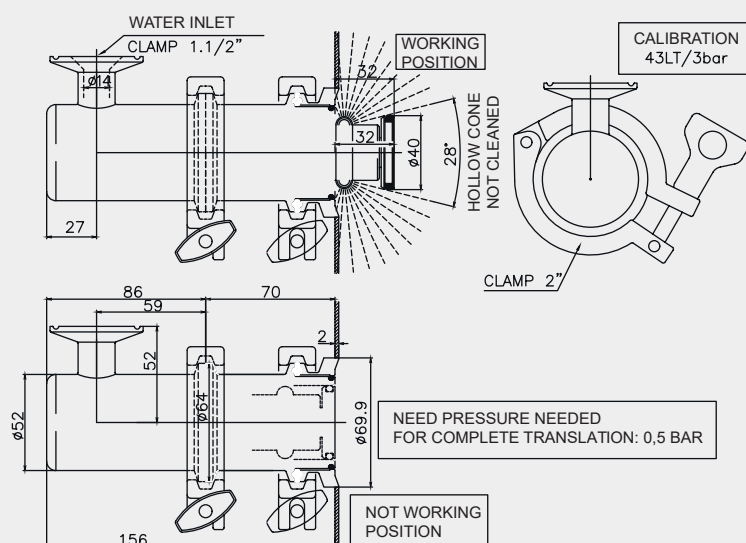


RT611-AAA

TECHNICAL SPECIFICATIONS

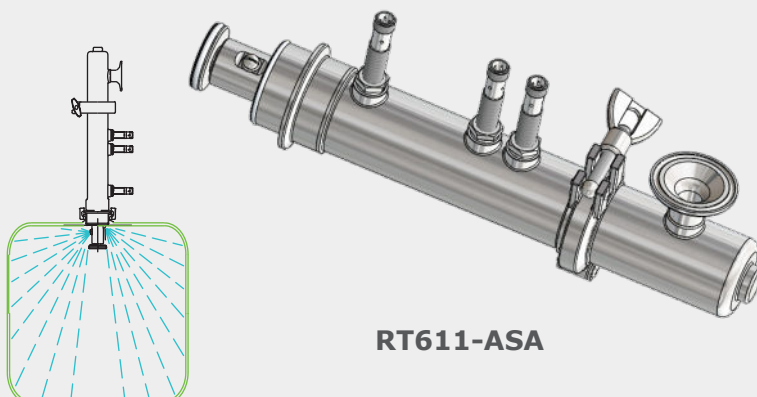
Flow rate by pressure

FLOW RATE	l/min	33	43	49	55	61	66	71	76	80
PRESSURE	bar	2	3	4	5	6	7	8	9	10
WATER INLET	1"½ TRI-CLAMP									
MAX TEMPERATURE	90 °C									
O.RING	EPDM									
BUSHES	PEEK									
MATERIAL	AISI 316									
INLET HOLE	Ø45 mm									
WEIGHT	2.4 kg									



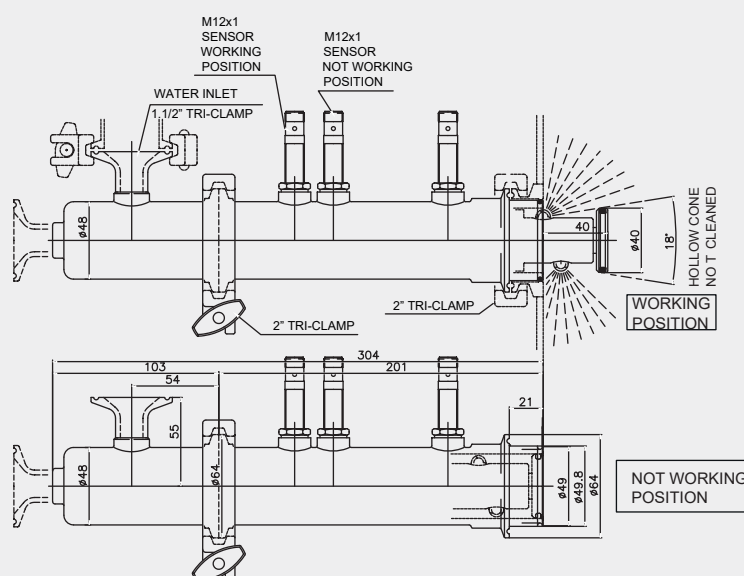
RT611-AAA

- Cleaning of food industry machinery interiors
- Cleaning of pharmaceutical industry pipework



Flow rate by pressure

FLOW RATE	l/min	10	15	19	22	24	27	29	31
PRESSURE	bar	1	2	3	4	5	6	7	8
WATER INLET	1"½ TRI-CLAMP								
MAX TEMPERATURE	90 °C								
O.RING	EPDM								
BUSHES	PEEK								
MATERIAL	AISI 316								
INLET HOLE	Ø45 mm								
WEIGHT	2.4 kg								



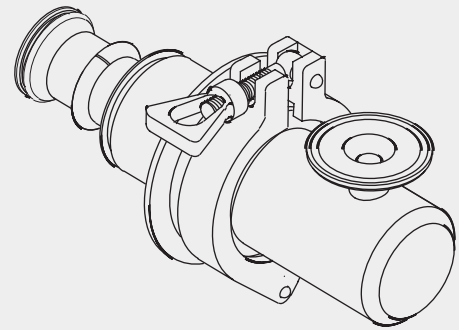
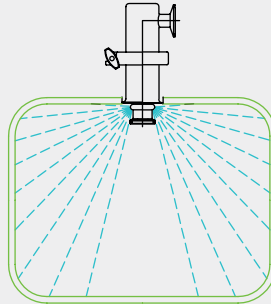
RT611-ASA

Acquamotor (water-driven)

RT111-AA is a cleaning head whose movement is driven by the reactive force of the cleaning fluid itself.

APPLICATIONS

- Cleaning of food industry machinery interiors
- Cleaning of pharmaceutical industry pipework



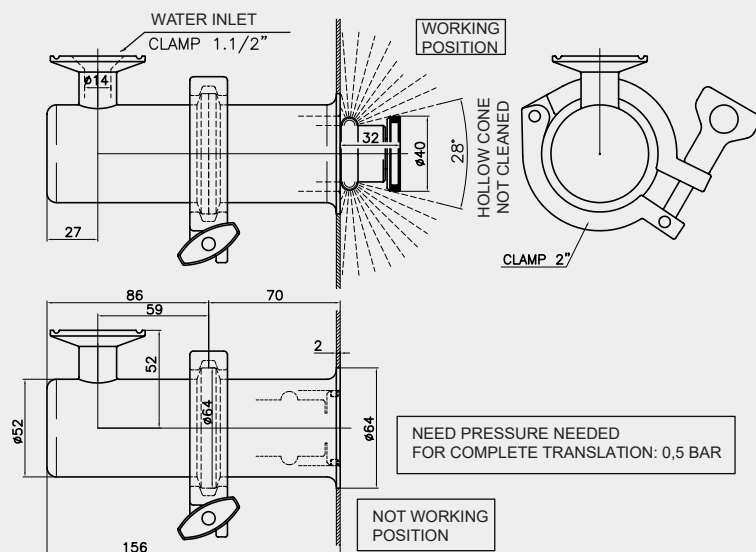
RT111-AA

TECHNICAL SPECIFICATIONS

Flow rate by pressure

FLOW RATE	l/min	10	15	19	22	24	27	29	31
PRESSURE	bar	1	2	3	4	5	6	7	8
WATER INLET	1 1/2 TRI-CLAMP								
MAX TEMPERATURE	90 °C								
O.RING	EPDM								
BUSHES	PEEK								
MATERIAL	AISI 316								
INLET HOLE	Ø45 mm								
WEIGHT	2.4 kg								

CE | Atex Ex II 1 GD



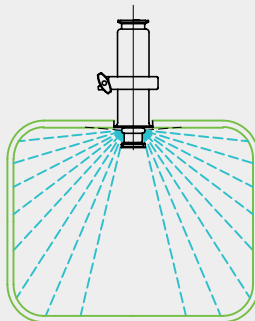
RT111-AA

Acquamotor (water-driven)

RT111-AB is a cleaning head whose movement is driven by the reactive force of the cleaning fluid itself.

APPLICATIONS

- Cleaning of food industry machinery interiors
- Cleaning of pharmaceutical industry pipework



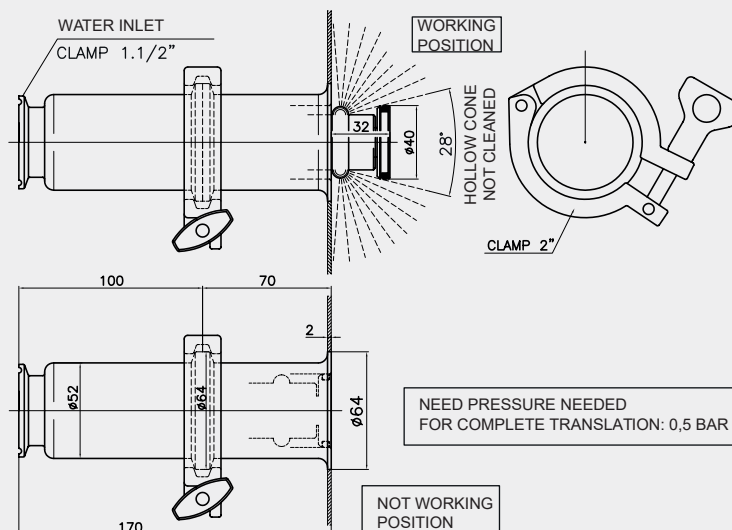
RT111-AB

TECHNICAL SPECIFICATIONS

Flow rate by pressure

FLOW RATE	l/min	10	15	19	22	24	27	29	31
PRESSURE	bar	1	2	3	4	5	6	7	8
WATER INLET		1"½ TRI-CLAMP							
MAX TEMPERATURE		90 °C							
O.RING		EPDM							
BUSHES		PEEK							
MATERIAL		AISI 316							
INLET HOLE		Ø45 mm							
WEIGHT		2.4 kg							

CE | Atex  II 1 GD



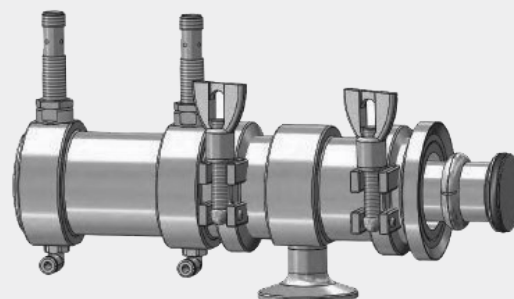
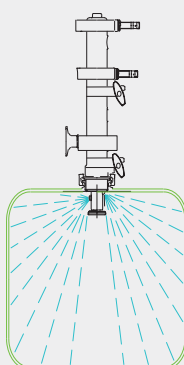
RT111-AB

Acquamotor (water-driven)

RT111-P is a cleaning head whose movement is driven by the reactive force of the cleaning fluid itself.

APPLICATIONS

- Cleaning of food industry machinery interiors
- Cleaning of pharmaceutical industry pipework



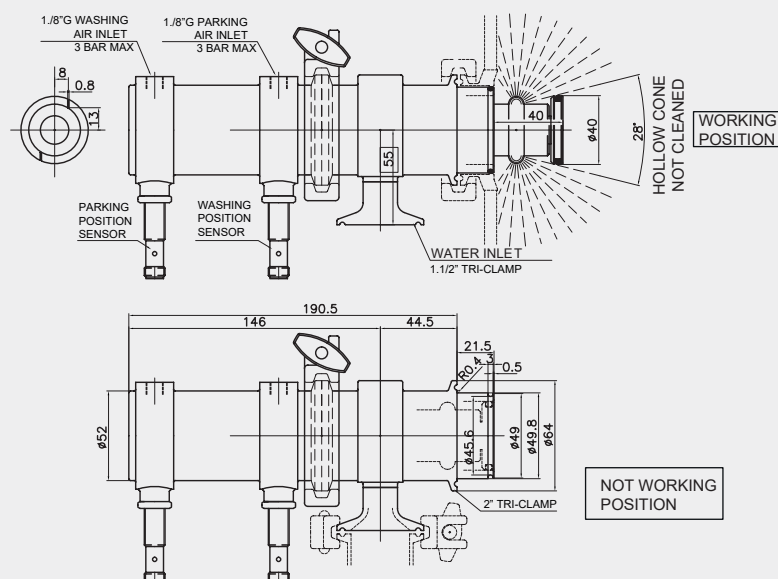
RT111-P

TECHNICAL SPECIFICATIONS

Flow rate by pressure

FLOW RATE	l/min	10	15	19	22	24	27	29	31
PRESSURE	bar	1	2	3	4	5	6	7	8
WATER INLET		1 1/2" TRI-CLAMP							
MAX TEMPERATURE		90 °C							
O.RING		EPDM							
BUSHES		PEEK							
MATERIAL		AISI 316							
INLET HOLE		Ø45 mm							
WEIGHT		2.4 kg							

CE | Atex II 1 GD

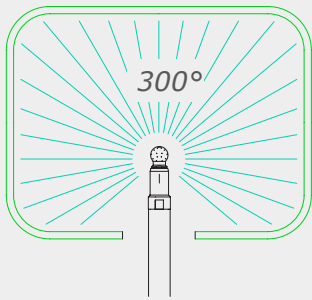


Acquamotor (water-driven)

RT105-P is a rotating cleaning head whose rotation is generated by the force of the liquid. The innovation of this cleaning head is the speed control system. The speed is kept constant, even when the flow rate/pressure varies.

APPLICATIONS

- Cleaning of mixers
- Cleaning of tanks
- Cleaning of machinery interiors



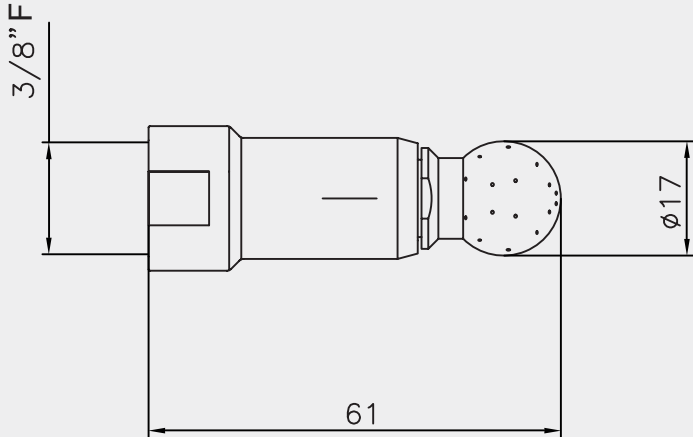
RT105-P

TECHNICAL SPECIFICATIONS

Flow rate by pressure

FLOW RATE	l/min	8,2	12,2	14,5	16,5	18,5	20,1	21,8	23,2	24,5	25,9
PRESSURE	bar	1	2	3	4	5	6	7	8	9	10

CE



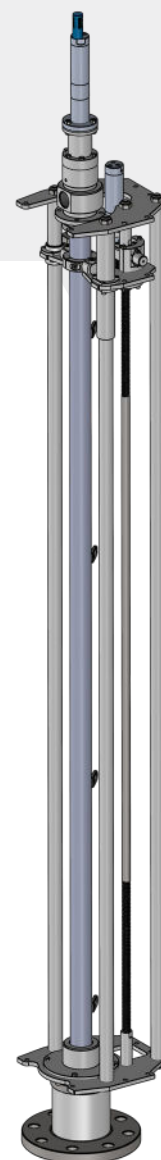
RT105-P

Linear actuators

TA0800 is a linear actuator designed to move a cleaning head. It is powered by a pneumatic motor and is set up to be equipped with sensors to control its movement.

APPLICATIONS

- Cleaning of chemical industry mixers
- Cleaning of pharmaceutical industry tanks



DESCRIPTION

PNEUMATIC SINGLE-SCREW LINEAR ACTUATOR

Composed of:

LINEAR ACTUATOR MOD. TA0800

HEAD USED

XC061

XC068

XC060

MINIMUM STROKE (mm)

On request

MAXIMUM STROKE (mm)

5700

CERTIFICATION

CE | **Atex** **Ex** **II 1 GD**

SET UP FOR SENSORS

YES

SET UP FOR VACUUM

On request

MOUNTING FLANGE

DN80 PN10/PN16 - DN100 PN10/PN16

BRAKE

NO

Max angle from vertical α°

800 to 1000 mm

30°

1001 to 2000 mm

15°

2001 to 3000 mm

10°

3001 to 4200 mm

5°

4201 to 5700 mm

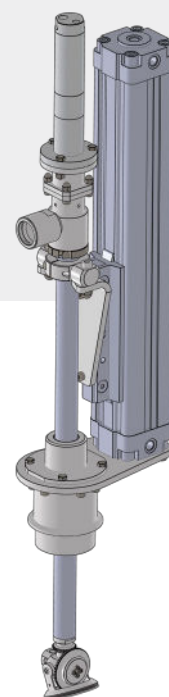
3°

Linear actuators

TA-CM is a linear actuator designed to move a cleaning head. Pneumatically driven.

APPLICATIONS

- Cleaning of machinery interiors
- Cleaning of mixers
- Cleaning of reactors
- Cleaning of high-shear emulsifiers



DESCRIPTION	PNEUMATIC JACK LINEAR ACTUATOR
-------------	--------------------------------

Composed of:	PNEUMATIC JACK
--------------	----------------

HEAD USED	XC060-XC061-XC068-XT076
-----------	-------------------------

MINIMUM STROKE (mm)	On request
MAXIMUM STROKE (mm)	1000
CERTIFICATION	CE Atex Ex II 1 GD
SET UP FOR SENSORS	YES
SET UP FOR VACUUM	On request
MOUNTING FLANGE	On request
BRAKE	NO

Linear actuators

TA-FE is a linear actuator designed to move a cleaning head. Pneumatically driven.

APPLICATIONS

- Cleaning of chemical industry mixers
- Cleaning of pharmaceutical industry tanks



DESCRIPTION	PNEUMATIC JACK LINEAR ACTUATOR
-------------	--------------------------------

Composed of:	ATEX PNEUMATIC JACK
--------------	---------------------

HEAD USED	XC060-XC061-XC068-XT076
-----------	-------------------------

MINIMUM STROKE (mm)	On request
MAXIMUM STROKE (mm)	1000
CERTIFICATION	CE Atex Ex II 2G - II 3D
SET UP FOR SENSORS	YES
SET UP FOR VACUUM	On request
MOUNTING FLANGE	DN80 PN10/PN16 - DN100 PN10/PN16
BRAKE	NO

Linear actuators

TA-NG is a linear actuator designed to move a cleaning head. Pneumatically driven.

APPLICATIONS

- Cleaning of chemical industry mixers
- Cleaning of pharmaceutical industry tanks

DESCRIPTION

PNEUMATIC JACK LINEAR ACTUATOR

Composed of:

PNEUMATIC JACK WITH BRAKE

HEAD USED

XC060-XC061-XC068

MINIMUM STROKE (mm)

On request

MAXIMUM STROKE (mm)

1000

CERTIFICATION



SET UP FOR SENSORS

YES

SET UP FOR VACUUM

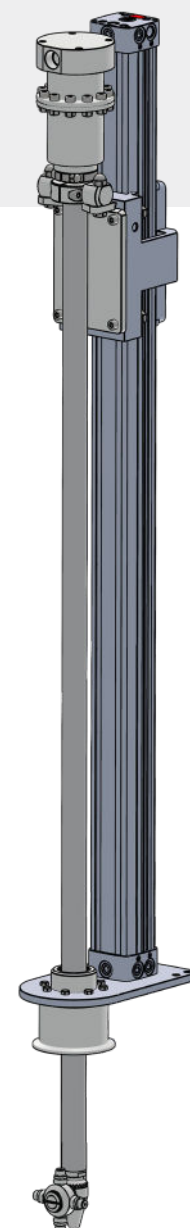
On request

MOUNTING FLANGE

On request

BRAKE

YES



Linear actuators

TA060 is a linear actuator designed to move a cleaning head. Pneumatically driven.

APPLICATIONS

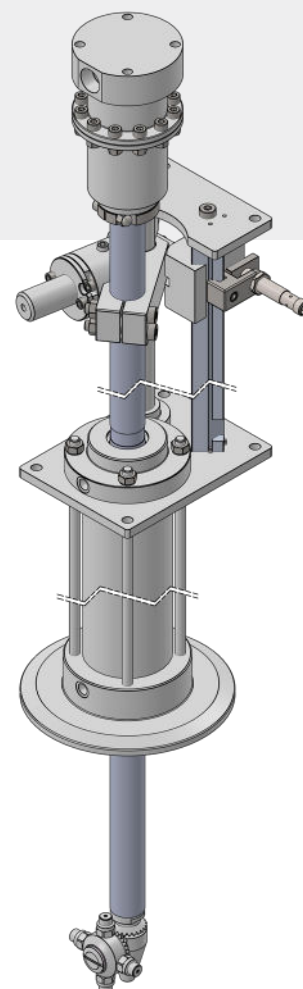
- Cleaning of chemical industry mixers
- Cleaning of pharmaceutical industry tanks

DESCRIPTION	PNEUMATIC PISTON LINEAR ACTUATOR
-------------	----------------------------------

Composed of:	SINGLE-TUBE PNEUMATIC PISTON
--------------	------------------------------

HEAD USED	XC060-XC061-XC068
-----------	-------------------

MINIMUM STROKE (mm)	On request
MAXIMUM STROKE (mm)	800
CERTIFICATION	CE Atex  II 1 GD
SET UP FOR SENSORS	YES
SET UP FOR VACUUM	On request
MOUNTING FLANGE	On request
BRAKE	YES

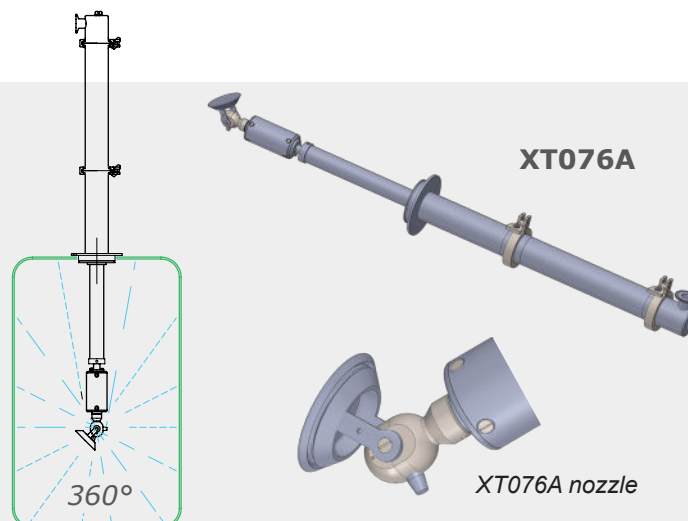


Acquamotor (water-driven)

XT076A is a retractable water-driven cleaning head (acquamotor), ideal for cleaning at low pressure and high flow rate (10 bar - 100 l/min).

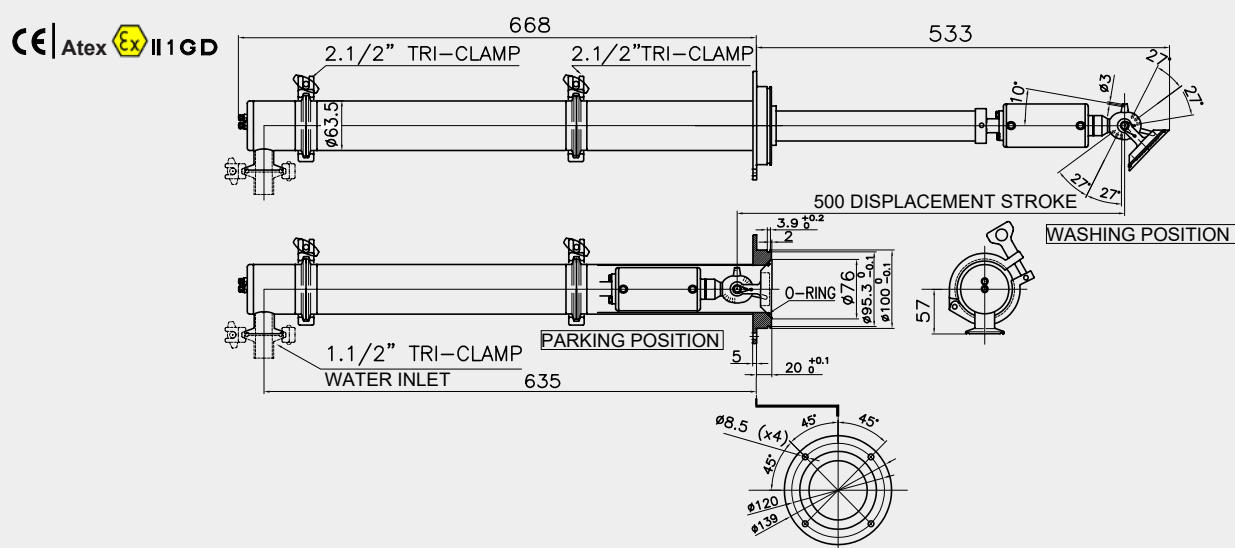
APPLICATIONS

- Cleaning of food industry mixers
- Cleaning of chemical industry reactors
- Cleaning of food industry atomisers



TECHNICAL SPECIFICATIONS

FLOW RATE	50 - 100 l/min
PRESSURE	3 - 10 bar
MAX TEMPERATURE	90 °C
NOZZLES	integrated
INLET CONNECTION	1/2" TRI-CLAMP
MATERIALS	Gaskets: EPDM - Bushes: PEEK AISI 316
ROTATION SPEED	12-27 rpm
SPRAY COVERAGE ANGLE	360°
WEIGHT	8.3 kg



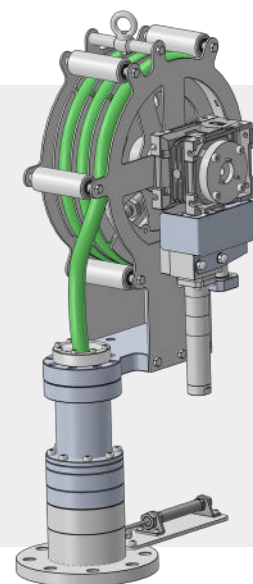
XT076A

Linear actuators

TA0500 is a linear actuator with hose reel. Movement is driven by pneumatic motor.

FEATURES

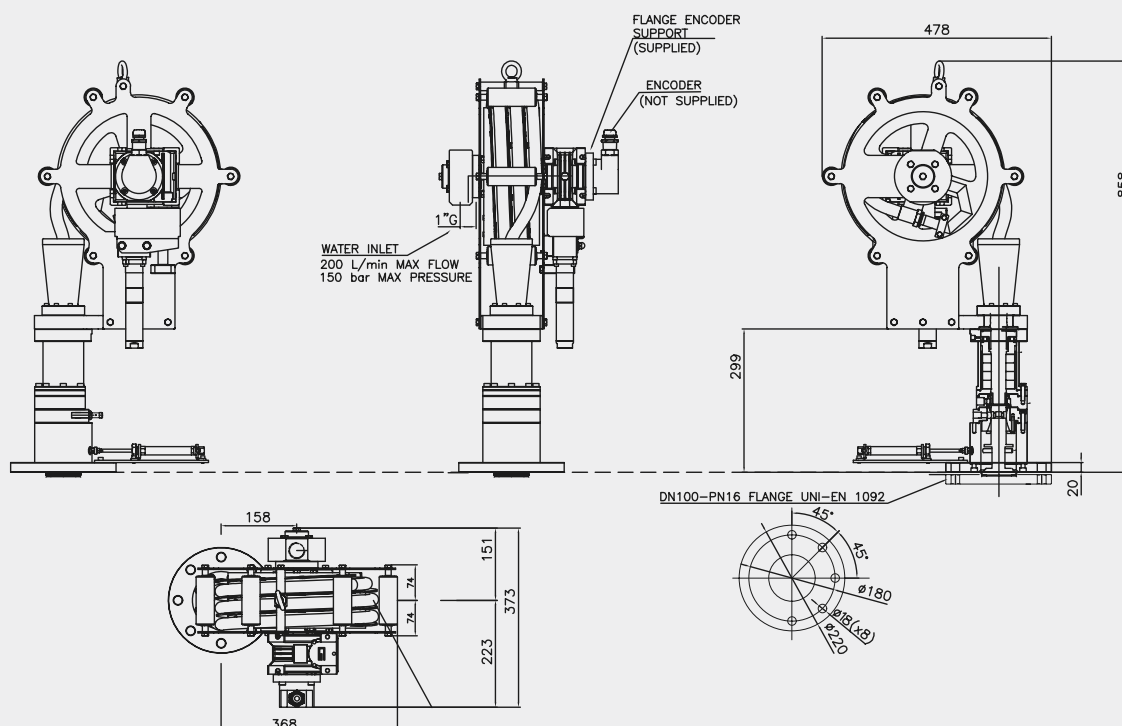
- Reduced dimensions
- Adjustable cleaning height
- Hose extension up to 2.5 m
- Drying of cleaning hose



TA0500

TECHNICAL SPECIFICATIONS

MAX AIR PRESSURE	6 bar
AIR INLET	Ø8 hose
MATERIAL	stainless steel
MOUNTING FLANGE	DN100 PN16
TRAVEL RANGE	as requested by the customer
TRAVEL SPEED	~0.7 m/min at 1 bar to ~1.7 m/min at 6 bar
WEIGHT	~50 kg



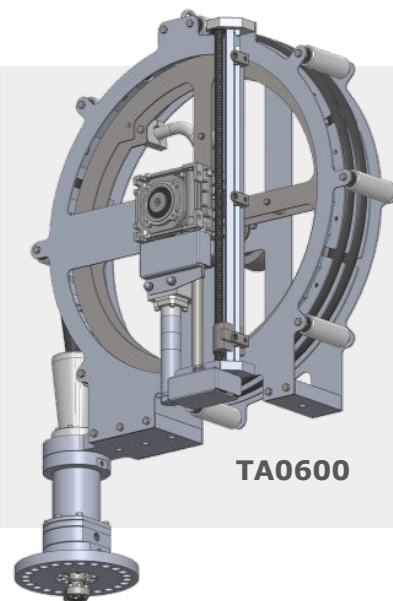
TA0500

Linear actuators

TA0600 is a linear actuator with hose reel. Movement is driven by pneumatic motor.

FEATURES

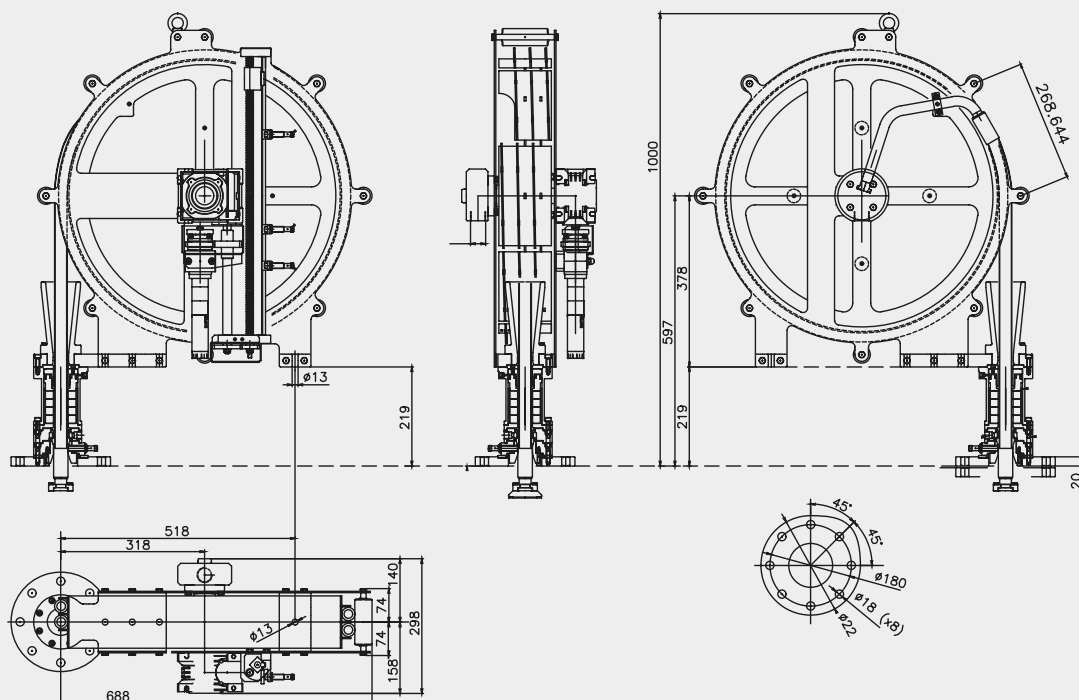
- Reduced dimensions 800 mm
- Multiple cleaning positions
- Hose length up to 4 metres
- Drying of cleaning hose



TA0600

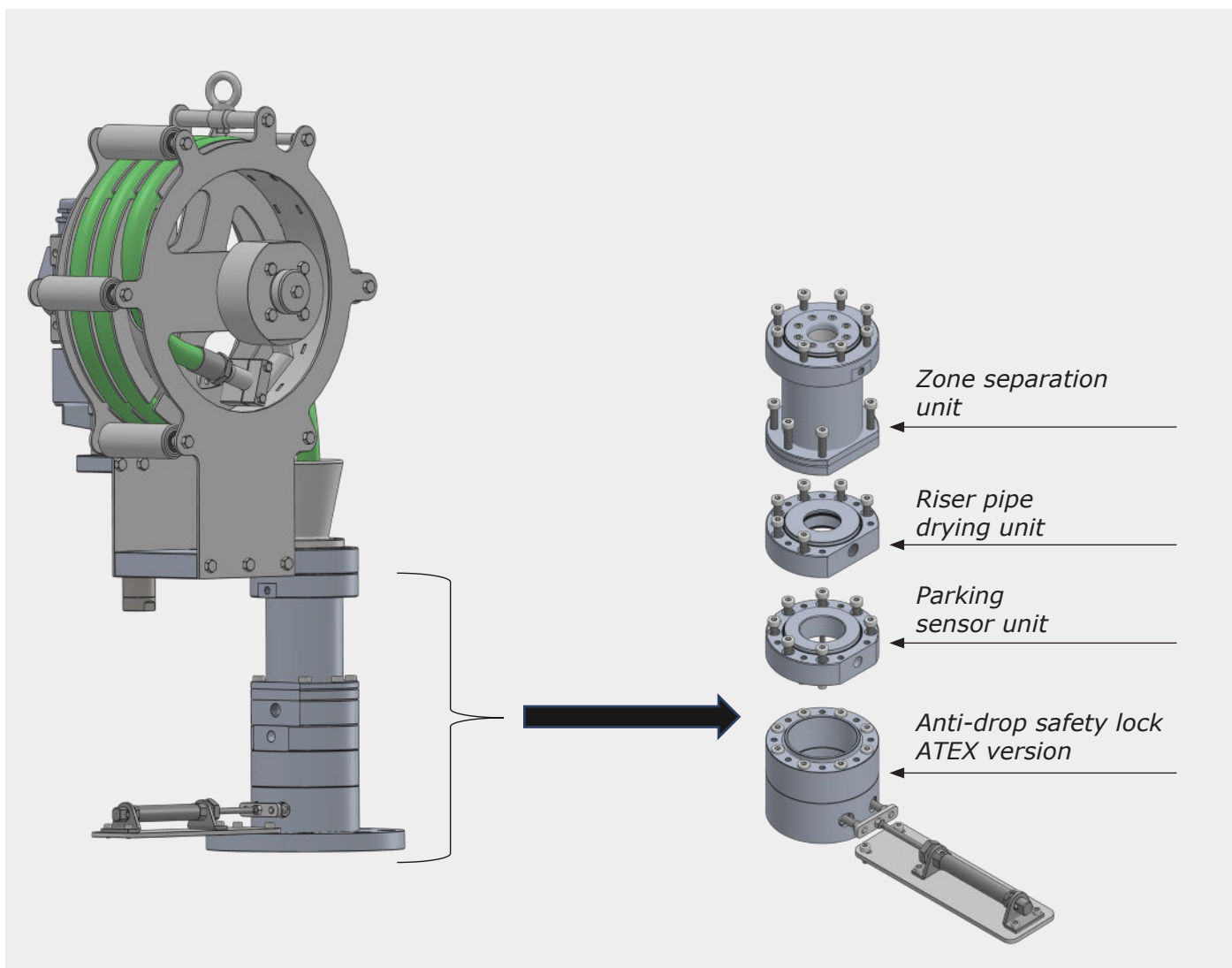
TECHNICAL SPECIFICATIONS

MAX AIR PRESSURE	6 bar
AIR INLET	Ø8 hose
MATERIAL	stainless steel
MOUNTING FLANGE	DN100 PN16
TRAVEL RANGE	as requested by the customer
TRAVEL SPEED	~1.5 m/min at 1 bar to ~3.5 m/min at 6 bar
WEIGHT	~65 kg



TA0600

TA0500 ACCESSORIES



ACCESSORIES

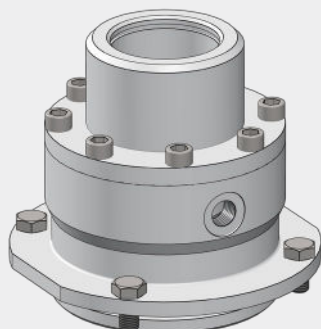
IBC cover



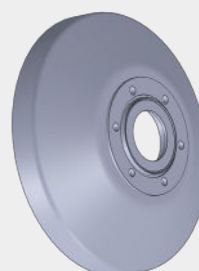
Protection cage for RW Series



Flange unit for vacuum



Parabolic nozzle holder protection for FV Series



ACCESSORIES

**DERC SALOTECH**

Jan van der Heijdenstraat 44
3261 LE Oud-Beijerland
NETHERLANDS
website: dercsalotech.nl
phone: +31 186 621 484
email: info@salotech.nl