



**PROTECTION FOR
WATER JETTING**



YOU'RE SAFE WITH US

We're on a mission: To make sure that our customers come home to their family and loved ones, every day. This is our reason for being and what drives us to go to work each morning. We do it by improving people's safety and performance in extremely demanding work environments, like oil platforms, alongside roads, in ports and heavy industries.

It's no coincidence that we're the leading company in protective clothing and equipment. Every single product is born out of necessity, developed in close cooperation with our end users. Over the years, we have developed a culture

of continuous innovation, where methods, concepts, and products are developed and refined on an ongoing basis. We have evolved into an innovative business partner who, through impeccable service and expertise, makes personal protective equipment smarter and the world a little safer. Our motto is "Saving Lives". This is not only our duty, but it also makes us feel good. It would be difficult to find anything more meaningful to spend our time doing.

We are Smooth, Ambitious, Futuristic, Energetic. In short: We are S.A.F.E. So are you.

ELITE OPERATOR®

SINGLE **2 000 BAR**
ROTOR **3 000 BAR**

30 000 PSI 43 500 PSI

10/28

SINGLE **1 000 BAR**
ROTOR **2 800 BAR**

15 000 PSI 40 000 PSI

PRO OPERATOR®

SINGLE **200 BAR**
ROTOR **500 BAR**

3 000 PSI 7 500 PSI

ACCESSORIES

UP TO 3 000 BAR

WORKPLACE SAFETY SOLUTIONS

SINGLE **3 000 BAR**
TUBE **1 400 BAR**

43 500 PSI 20 300 PSI

SAFETY AND TECHNICAL INFO

ELITE OPERATOR® 2 000 BAR 3 000 BAR

10/28 1 000 BAR 2 800 BAR

PRO OPERATOR® 200 BAR 500 BAR



GAMMA KIT
Page 14

ART. NO. 51K3068 5075



SIGMA KIT
Page 14

ART. NO. 51K2068 5075



DELTA KIT
Page 15

ART. NO. 51K1068 5075



ALFA KIT
Page 15

ART. NO. 51K4068 5075



GAMMA KIT
Page 28

ART. NO. 51K3047 5000



SIGMA KIT
Page 28

ART. NO. 51K2047 5000



DELTA KIT
Page 29

ART. NO. 51K1047 5000



ALFA KIT
Page 29

ART. NO. 51K4047 5000



JACKET
Page 44

ART. NO. 5622025 5024



TROUSERS
Page 44

ART. NO. 5632025 5024



OVERALL
Page 51

ART. NO. 5640025 5024



APRON
Page 52

ART. NO. 5623025 5024



JACKET

Page 16

ART. NO. 5122068 5075



VEST

Page 19

ART. NO. 5120068 5075



APRON

Page 20

ART. NO. 5123068 5075



VEST WITH APRON

Page 20

ART. NO. 5123568 5075



JACKET

Page 30

ART. NO. 5122047 5080



VEST

Page 33

ART. NO. 5120047 5000



APRON

Page 34

ART. NO. 5123047 5000



VEST WITH APRON

Page 34

ART. NO. 5123547 5000



JACKET HI VIS

Page 47

ART. NO. 5622025 5624



TROUSERS HI VIS

Page 47

ART. NO. 5632025 5624



OVERALL HI VIS

Page 51

ART. NO. 5640025 5624



ARM PROTECTIONS

Page 52

ART. NO. 5602025 5024



TROUSERS

Page 16

ART. NO. 5132068 5075



OVERALL

Page 19

ART. NO. 5144068 5075



HAND PROTECTIONS

Page 21

ART. NO. 5100068 5075



VENTILATION

Page 94

ART. NO. 5123568 5075



TROUSERS

Page 30

ART. NO. 5132047 5000



OVERALL

Page 33

ART. NO. 5144047 5080



HAND PROTECTIONS

Page 35

ART. NO. 5100047 5000



VENTILATION

Page 94

ART. NO. 5123547 5000



VEST HI VIS

Page 48

ART. NO. 5620025 5624

ACCESSORIES

WORKPLACE SAFETY SOLUTIONS

VENTILATION & COOLING



HEAD PROTECTION

3000 BAR

Page 58

ART. NO. 5102068 5000



NECK PROTECTION

3000 BAR

Page 61

ART. NO. 5110568 5075



BALACLAVA

Page 61

ART. NO. 5010000 5000



GLOVES

500 BAR

Page 62

ART. NO. 5600025 5000



HOSE PROTECTION

3000 BAR

Page 69

ART. NO. 5132047 5000



HOSE PROTECTION

500 BAR

Page 69

ART. NO. 5144047 5080



SAFETY FUNNEL

Page 76

ART. NO. 5100047 5000



SAFETY PIPE CAP

Page 77

ART. NO. 5123547 5000



SAFETY BOOTH

Page 78

ART. NO. 5850012 5000



SAFETY CURTAIN

Page 79

ART. NO. 5800010 5885



VENTILATION VEST

Page 96

ART. NO. 5198010 5000



MULTI

Page 96

ART. NO. 3020P60 3313



GAITERS

3000 BAR

Page 65

ART. NO. 5158068 5075



BOOTS

3000 BAR

Page 66

ART. NO. 5052080 5000



BOOTS

1 200 BAR

Page 66

ART. NO. 5654027 5011



TST GREASE REMOVER

Page 99

ART. NO. 5123568 5075



HOSE CONNECTION COVER

Page 70

ART. NO. 5132047 5000



WHIP STOP

Page 70

ART. NO. 5072000 5000



ROBOT GUARD

Page 79

ART. NO. 5100047 5000



SCUFF GUARD

500 CM

Page 80

ART. NO. 5880050 5978



SCUFF GUARD

70 CM

Page 80

ART. NO. 5880060 5918



FLEXI

Page 97

ART. NO. 3020P60 3310



TEMPTECH® ELEMENTS

Page 97

ART. NO. 3020P60 3313



ELITE OPERATOR®

 SINGLE **2 000 BAR**

 ROTOR **3 000 BAR**

 30 000 PSI  43 500 PSI

EliteOperator® is our range for water jetting with the highest level of protection up to 3 000 bar / 43 500 psi. Developed in close collaboration with our end users the range offers revolutionary comfort and compliance

for PPE at this level of protection. All to keep operators across the globe safe and protected throughout their workday.



MAXIMIZE THE FREEDOM OF MOVEMENT

Our EliteOperator® product series with Athletic Design is quite simply a revolution for the mobility and compliance of protective clothing at this level of protection. Athletic Design makes it easier to walk, bend down, crouch, bend arms, bend legs, squat, climb ladders, walk stairs, and everything else an operator does during a work shift. The difference to other PPE on this level of protection is so remarkable that you must try the range to believe it!

The revolutionary Athletic Design can be found on parts both with and without protection. Protective areas are considerably more compliant, while non-protective areas are made in elastic fabric. This, combined with strategically placed seams, enhances both freedom of movement and keeps the operators protected and comfortable.

THE FABRICS

TECHSTEEL™

Outer shell in all protective areas. Water repellent and very high-resistant against abrasion and tearing, over 500 000 Martindale.

STRETCH

On areas without protection, for high mobility and comfort.

DYNEEMA®

The protective fabric inside the clothing is made of the strongest fiber in the world, 15 times stronger than steel.

SYNTHETIC FIBER-BASED REINFORCEMENT

Extra reinforcement on exposed surfaces, such as knees and leg ends.

THE DESIGN

A WEDGE THAT MAKES A DIFFERENCE

It's all in the details. A wedge-shaped part in the armpit area provides increased mobility.

PRE-BENT KNEES

Pre-bent knees add flexibility to our Trousers and Overalls. Neoprene fabric closest to the knee offers a soft, lightly padded feel.

NEW DESIGN IN THE GROIN

The protective area with Dyneema® is divided into several parts, which increases mobility.

A REVOLUTION ON THE INSIDE

EliteOperator® is full of revolutionary details. Some can't be seen with the eye, but you will feel it! The protective areas with Dyneema® follow the body's movements which provides superior mobility, and a more comfortable workday.

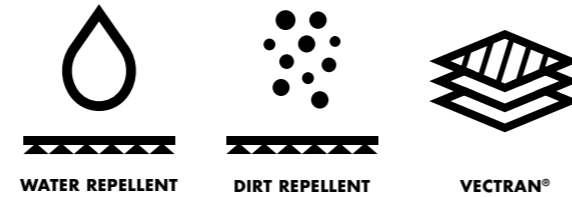
AREAS WITH PROTECTION

It is essential that the operator knows where and for what the clothes protect. Glossy fabric clearly identifies protective areas, and the label tells the level of protection. Orange labels indicate protection for 2 000 bar / 30 000 psi single jet and 3 000 bar / 43 500 psi rotor jet – 20/30. See test tables on page 88.



KEEP DRY AND LIGHT

The outer fabric in Techsteel™ is both dirt and water repellent, which keeps the operator dry and light all day long. Techsteel™ has very high resistance against abrasion and tearing, over 500 000 Martindale. The outer material is furthermore reinforced with Vectran® (LCP) for maximum strength and durability. The request for these qualities comes originally from the industry of concrete removal and demolition.



FIVE LAYERS FOR OPTIMAL PERFORMANCE

TECHSTEEL™

Dirt and water repellent.
Durability: > 500 000 Martindale.

DYNEEMA®

The world's strongest fiber in protective areas.

MESH AND POLYESTER LINING

Ventilating and comfortable.

THE WORLD'S STRONGEST FIBER HAS GOT YOU COVERED

In protective areas of the clothing, we use an ultra strong and ultra light fiber – Dyneema®. On a weight for weight basis the fiber is 15 times stronger than steel and up to 40% stronger than aramids. This enables us to develop protective clothing which are lighter and more comfortable, without compromising on safety and durability.



KEEP YOUR COOL IN ANY SITUATION

Water jetting is a tough and demanding job. We offer solutions to help operators stay cool:

- Ventilation in Trousers and Overall
- Ventilation Vest
- Cooling Vest

Benefits:

- Avoid heat stress
- Feel better
- Work longer

Read more on page 94.



WE KEEP YOU SAFE FROM HEAD TO TOE

HEAD PROTECTION 3 000 BAR

See p. 58

JACKET

See p. 16

HOSE PROTECTION

See p. 69

TROUSERS

See p. 16

GLOVES 500 BAR

See p. 62

GAITERS

See p. 21



THE BEST PROTECTION
ON THE MARKET

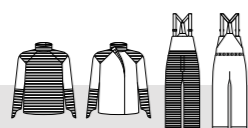


GAMMA KIT

BEST SELLER

- JACKET
- TROUSERS

- Full front water jet protection as well as round the neck, shoulders, and the entire area round the forearm.
- High mobility and comfort thanks to flexible protective material, stretch fabric and pre-bent knees on the trousers.
- Ventilation is an option. *Read more on page 94.*
- A great choice for jobs that require movement.
- Add Head Protection, Protective Gloves and Boots or Gaiters and you are protected from head to toe.
- CE Regulation (EU) 2016/425



STRIPED AREAS ARE PROTECTED

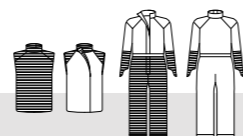
SINGLE 2000 BAR / 30000 PSI ROTOR 3000 BAR / 43500 PSI

SIZES	WEIGHT	ART. NO.
S/M-4XL/5XL	5.2 kg (SIZE L/XL)	51K3068 5075

SIGMA KIT

- VEST
- OVERALL

- The Overall protects the lower body, the Vest the upper body.
- High mobility in the Overall thanks to pre-bent knees and flexible protective material as well as stretch material in the back. Vest in flexible protective material increases mobility and protection.
- Ventilation is an option. *Read more on page 94.*
- A good choice if you move, climb or crawl a lot.
- Add Head Protection, Protective Gloves and Boots or Gaiters for a head to toe coverage.
- CE Regulation (EU) 2016/425



STRIPED AREAS ARE PROTECTED

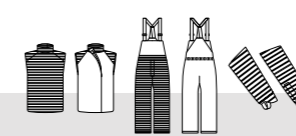
SINGLE 2000 BAR / 30000 PSI ROTOR 3000 BAR / 43500 PSI

SIZES	WEIGHT	ART. NO.
S-3XL	5.2 kg (SIZE L)	51K2068 5075

DELTA KIT

- VEST
- HAND PROTECTIONS
- TROUSERS

- High mobility and comfort thanks to flexible protective material, stretch fabric and pre-bent knees on the trousers.
- Compliant and comfortable.
- Ventilation is an option. *Read more on page 94.*
- A great choice in warm environments.
- Add Head Protection, Protective Gloves and Boots or Gaiters for a head to toe coverage.
- CE Regulation (EU) 2016/425



STRIPED AREAS ARE PROTECTED

SINGLE 2000 BAR / 30000 PSI ROTOR 3000 BAR / 43500 PSI

SIZES	WEIGHT	ART. NO.
S/M-2XL/3XL	4.9 kg (SIZE L/XL)	51K1068 5075

ALFA KIT

- VEST WITH APRON
- HAND PROTECTIONS

- Water jet protection over the shoulders and all the way down.
- Vest with Apron in flexible protective material provides both high mobility and protection.
- Easy to switch between users, e.g. if used by several operators.
- A great choice for stationary work and in warm environments.
- Add Head Protection, Protective Gloves and Boots or Gaiters for a head to toe coverage.
- CE Regulation (EU) 2016/425



STRIPED AREAS ARE PROTECTED

SINGLE 2000 BAR / 30000 PSI ROTOR 3000 BAR / 43500 PSI

SIZES	WEIGHT	ART. NO.
XXS/XS, L/XL, 2XL/3XL	3.5 kg (SIZE L/XL)	51K4068 5075



JACKET

- Full front water jet protection as well as round the neck, shoulders and the entire area round the forearm.
- High mobility and comfort thanks to flexible protective material, stretch fabric and advanced design.
- Adjusted fit for high comfort. Extended protective area on the torso and on the side.
- Fastening at the back for full protection in the front.
- A comfortable neoprene cuff inside the arm prevents water leakage.
- Part of the Gamma Kit.
- CE Regulation (EU) 2016/425



STRIPED AREAS ARE PROTECTED

 SINGLE 2000 BAR / 30000 PSI
  ROTOR 3000 BAR / 43500 PSI

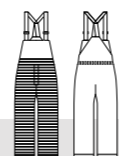
SIZES	WEIGHT	ART. NO.
S/M-4XL/5XL	2.5 kg (SIZE L/XL)	5122068 5075



TROUSERS



- Full front water jet protection up to the waist.
- High mobility thanks to pre-bent knees and flexible protective material as well as stretch material in the back.
- Adjusted fit for high comfort.
- Extra high wear resistance on the knees and at the bottom of the trousers. Knee pockets for knee pads.
- Adjustable suspenders, elastic rear waist and a belt helps distribute weight and improves the comfort.
- Ventilation is an option. *Read more on page 94.*
- Part of the Gamma Kit and Delta Kit.
- CE Regulation (EU) 2016/425



STRIPED AREAS ARE PROTECTED

 SINGLE 2000 BAR / 30000 PSI
  ROTOR 3000 BAR / 43500 PSI

SIZES	WEIGHT	ART. NO.
S/M-4XL/5XL	2.7 kg (SIZE L/XL)	5132068 5075



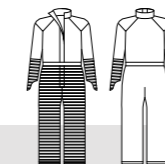
The Athletic Design is a revolution for the mobility and comfort in the UHP protective clothing segment.



OVERALL



- Water jet protection on the whole front of the legs up to the waist, and round the forearm. Note: No protection on the upper body. Must be worn together with Vest.
- High mobility thanks to pre-bent knees and flexible protective material as well as stretch material in the back.
- Openable legs from the knees down.
- The neoprene collar seals well round the neck while maintaining freedom of movement.
- The Overall stays in place, whether the operator is climbing on ladders or working in narrow spaces.
- Ventilation is an option. *Read more on page 94.*
- Part of the Sigma Kit.
- CE Regulation (EU) 2016/425



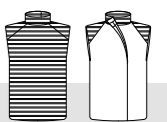
STRIPED AREAS ARE PROTECTED

🔪 SINGLE 2000 BAR / 30000 PSI 🧤 ROTOR 3000 BAR / 43500 PSI

SIZES	WEIGHT	ART. NO.
S-3XL	3.5 kg (SIZE L)	5144068 5075

VEST

- Superior fit and protection surface thanks to expanded size range.
- Flexible protective material increases mobility and protection.
- Effective protection and optimal comfort.
- Part of the Sigma Kit and Delta Kit.
- CE Regulation (EU) 2016/425



STRIPED AREAS ARE PROTECTED

🔪 SINGLE 2000 BAR / 30000 PSI 🧤 ROTOR 3000 BAR / 43500 PSI

SIZES	WEIGHT	ART. NO.
S/M-2XL/3XL	1.7 kg (SIZE L/XL)	5120068 5075



VEST WITH APRON

- Superior freedom of movement and comfort, yet effective water jet protection for the whole front of the body.
- Superior fit and protection surface thanks to expanded size range.
- Flexible protective material increases mobility and protection.
- Vest on top helps spreading the weight of the garment.
- Easy adjusting for different operators and purposes.
- Part of the Alfa Kit.
- CE Regulation (EU) 2016/425



STRIPED AREAS ARE PROTECTED

🔪 SINGLE 2000 BAR / 30000 PSI 🧤 ROTOR 3000 BAR / 43500 PSI

SIZES	WEIGHT	ART. NO.
XXS/XS, L/XL, 2XL/3XL	3.0 kg (SIZE L/XL)	5123568 5075



APRON

- Water jet protection on the whole area of the Apron.
- Adjustable shoulder band for comfort and easy donning.
- Very easy to put on and take off. Can easily be used by multiple operators.
- Can be upfolded and fastened for easier work in stairs and on ladders.
- Often used in combination with Hand Protections and Gaiters or Boots 3 000.
- CE Regulation (EU) 2016/425



STRIPED AREAS ARE PROTECTED

🔪 SINGLE 2000 BAR / 30000 PSI 🧤 ROTOR 3000 BAR / 43500 PSI

SIZES	WEIGHT	ART. NO.
ONE SIZE	1.5 kg	5123068 5075



HAND PROTECTIONS

- Protects the entire area round the forearm and the back of the hand.
- Easy to put on and is kept in place with a thumb strap.
- Easy adjusting for different arms and clothing.
- Specific right and left hand designs. Sold in pairs.
- Part of Alfa and Sigma Kit.
- CE Regulation (EU) 2016/425



STRIPED AREAS ARE PROTECTED

🔪 SINGLE 2000 BAR / 30000 PSI 🧤 ROTOR 3000 BAR / 43500 PSI

SIZES	WEIGHT	ART. NO.
ONE SIZE	0.5 kg	5100068 5075



GAITERS 3 000 BAR

- To be worn on the outside of regular protective boots.
- The entire area around the leg and the foot is protected.
- Very comfortable and light to wear.
- Easy to adjust for a perfect fit.
- Specific right and left foot designs. Sold in pairs.
- CE Regulation (EU) 2016/425



STRIPED AREAS ARE PROTECTED

🔪 SINGLE 2000 BAR / 30000 PSI 🧤 ROTOR 3000 BAR / 43500 PSI

SIZES	WEIGHT	ART. NO.
EUR 36-41, 42-48, 49-52	1.4 kg	5158068 5075

10/28



SINGLE

1 000 BAR



ROTOR

2 800 BAR



15 000 PSI



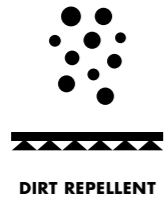
40 000 PSI

With protection up to 1 000 bar single jet and 2 800 bar rotor jet, our 10/28 range is the perfect choice not only for handheld, but also for robotic and automatic

water jetting. Strong yet comfortable, the 10/28 range offers protection for all parts of the body.

KEEP DRY AND LIGHT

The outer material has a DWR (Durable Water Repellent) treatment. This keeps the operator dryer and lighter, and makes the clothes easy to clean.



THE WORLD'S STRONGEST FIBER PROTECTS YOU

In protective areas of the clothing, we use an ultra strong and ultra light fiber – Dyneema®. On a weight for weight basis the fiber is 15 times stronger than steel and up to 40% stronger than aramids. This enables us to develop protective clothing which are lighter and more comfortable, without compromising on safety and durability.



AREAS WITH PROTECTION

It is essential that the operator knows where and for what the clothes protect. Striped fabric clearly identifies protective areas, and the label tells the level of protection. Yellow label indicates protection for 1 000 bar / 15 000 psi single jet and 2 800 bar / 40 000 psi rotor jet. See test tables on page 88.



10/28

FIVE LAYERS FOR OPTIMAL PERFORMANCE

POLYAMIDE

Dirt and water repellent.
Durability: 300 000 Martindale.

DYNEEMA®

The world's strongest fiber in protective areas.

MESH AND POLYESTER LINING

Ventilating and comfortable.



KEEP YOUR COOL IN ANY SITUATION

Water jetting is a tough and demanding job. We offer solutions to help operators stay cool:

- Ventilation in Trousers and Overall
- Ventilation Vest
- Cooling Vest

Benefits:

- Avoid heat stress
- Feel better
- Work longer

Read more on page 94.

PROTECTION FROM HEAD TO TOE

HEAD PROTECTION 3 000 BAR

See p. 58

JACKET

See p. 30

HOSE PROTECTION

See p. 69

TROUSERS

See p. 30

GLOVES 500 BAR

See p. 62

BOOTS 3 000 BAR

See p. 65



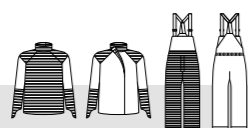


GAMMA KIT

BEST SELLER

- JACKET
- TROUSERS

- Full front water jet protection as well as round the neck, shoulders, and the entire area round the forearm.
- Ventilation is an option. *Read more on page 94.*
- A great choice for jobs that require movement.
- Add Head Protection, Protective Gloves and Boots or Gaiters and you are protected from head to toe.
- CE Regulation (EU) 2016/425



STRIPED AREAS ARE PROTECTED

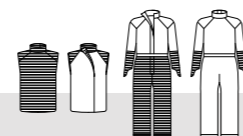
SINGLE 1 000 BAR / 15 000 PSI ROTOR 2 800 BAR / 40 000 PSI

SIZES	WEIGHT	ART. NO.
S/M-4XL/5XL	4.3 kg (SIZE L/XL)	51K3047 5000

SIGMA KIT

- VEST
- OVERALL

- The Overall protects the lower body, the Vest the upper body.
- Ventilation is an option. *Read more on page 94.*
- A good choice if you move, climb or crawl a lot.
- Add Head Protection, Protective Gloves and Boots or Gaiters for a head to toe coverage.
- CE Regulation (EU) 2016/425



STRIPED AREAS ARE PROTECTED

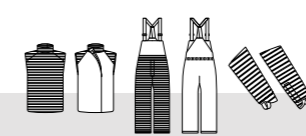
SINGLE 1 000 BAR / 15 000 PSI ROTOR 2 800 BAR / 40 000 PSI

SIZES	WEIGHT	ART. NO.
S-3XL	4.3 kg (SIZE L)	51K2047 5000

DELTA KIT

- VEST
- HAND PROTECTIONS
- TROUSERS

- Compliant and comfortable.
- Ventilation is an option. *Read more on page 94.*
- A great choice in warm environments.
- Add Head Protection, Protective Gloves and Boots or Gaiters for a head to toe coverage.
- CE Regulation (EU) 2016/425



STRIPED AREAS ARE PROTECTED

SINGLE 1 000 BAR / 15 000 PSI ROTOR 2 800 BAR / 40 000 PSI

SIZES	WEIGHT	ART. NO.
S/M-2XL/3XL	4.7 kg (SIZE L/XL)	51K1047 5000

ALFA KIT

- VEST WITH APRON
- HAND PROTECTIONS

- Water jet protection over the shoulders and all the way down.
- Easy to switch between several operators.
- A great choice for stationary work and in warm environments.
- Add Head Protection, Protective Gloves and Boots or Gaiters for a head to toe coverage.
- CE Regulation (EU) 2016/425



STRIPED AREAS ARE PROTECTED

SINGLE 1 000 BAR / 15 000 PSI ROTOR 2 800 BAR / 40 000 PSI

SIZES	WEIGHT	ART. NO.
ONE SIZE	3.4 kg	51K4047 5000



JACKET

- Full front water jet protection as well as round the neck, shoulders and the entire area round the forearm.
- Fastening at the back to get the full protection in the front.
- A comfortable neoprene cuff inside the arm prevents water leakage.
- Part of the Gamma Kit.
- CE Regulation (EU) 2016/425



STRIPED AREAS ARE PROTECTED

🔪 SINGLE 1 000 BAR / 15 000 PSI 🌀 ROTOR 2 800 BAR / 40 000 PSI

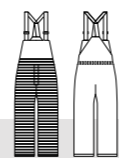
SIZES	WEIGHT	ART. NO.
S/M-4XL/5XL	2 kg (SIZE L/XL)	5122047 5080



TROUSERS



- Full front water jet protection up to the waist.
- Very popular among workers who move a lot, climb or crawl.
- Extra high wear resistance on the knees and at the bottom of the trousers. Knee pockets if you want to add knee pads.
- Wide, adjustable braces in stretch material. Elastic part in the rear waist and a belt which helps to distribute weight and improves the comfort.
- For work in warm environments, Trousers can be ordered with ventilation. *Read more on p. 94.*
- Part of the Gamma Kit and Delta Kit.
- CE Regulation (EU) 2016/425



STRIPED AREAS ARE PROTECTED

🔪 SINGLE 1 000 BAR / 15 000 PSI 🌀 ROTOR 2 800 BAR / 40 000 PSI

SIZES	WEIGHT	ART. NO.
S/M-4XL/5XL	2.3 kg (SIZE L/XL)	5132047 5000

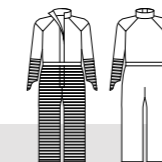






OVERALL



- Water jet protection on the whole front of the legs up to the waist, on the forearms and the entire area round the arm.
Note: No protection on the upper body. Must be worn together with Vest.
- The neoprene collar seals well round the neck while maintaining freedom of movement.
- The Overall is always in place, no matter if the operator is climbing on ladders or working in narrow spaces.
- Ventilation is an option. *Read more on p. 94.*
- Part of the Sigma Kit.
- CE Regulation (EU) 2016/425



STRIPED AREAS ARE PROTECTED

 SINGLE 1 000 BAR / 15 000 PSI
  ROTOR 2 800 BAR / 40 000 PSI



SIZES	WEIGHT	ART. NO.
S-3XL	3.0 kg (SIZE L)	5144047 5080

VEST

- Effective water jet protection and optimal comfort.
- Part of the Sigma Kit and Delta Kit.
- CE Regulation (EU) 2016/425



STRIPED AREAS ARE PROTECTED

 SINGLE 1 000 BAR / 15 000 PSI
  ROTOR 2 800 BAR / 40 000 PSI

SIZES	WEIGHT	ART. NO.
M/2XL, 3XL	1.3 kg (SIZE M/2XL)	5120047 5000

Overall with Hand Protections and Vest protects the whole front of the body. Especially appreciated in cold and windy places.



The Apron is easy to put on and take off. Great for shorter jobs and demonstrations.

VEST WITH APRON

- Superior freedom of movement and comfort, yet effective water jet protection for the whole front of the body.
- Vest on top helps spreading the weight of the protective garment.
- Easy adjusting for different operators and purposes.
- Part of the Alfa Kit.
- CE Regulation (EU) 2016/425



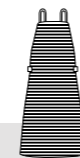
STRIPED AREAS ARE PROTECTED

☞ SINGLE 1 000 BAR / 15 000 PSI ☞ ROTOR 2 800 BAR / 40 000 PSI

SIZES	WEIGHT	ART. NO.
ONE SIZE	2.8 kg	5123547 5000

APRON

- Water jet protection on the whole area of the Apron.
- Adjustable shoulder band for good comfort and easy donning.
- Very easy to put on and take off. Can easily be used by multiple operators.
- Can be upfolded and fastened for easier work in stairs and on ladders.
- Often used in combination with Hand Protections and Gaiters or Boots 3 000.
- CE Regulation (EU) 2016/425



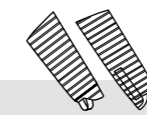
STRIPED AREAS ARE PROTECTED

☞ SINGLE 1 000 BAR / 15 000 PSI ☞ ROTOR 2 800 BAR / 40 000 PSI

SIZES	WEIGHT	ART. NO.
ONE SIZE	1.4 kg	5123047 5000

HAND PROTECTIONS

- Protects the entire area round the forearm and the back of the hand.
- Easy to put on and a thumb strap keeps it in place.
- Easy adjusting for different arms and clothing.
- Specific right and left hand designs. Sold in pair.
- CE Regulation (EU) 2016/425



STRIPED AREAS ARE PROTECTED

☞ SINGLE 1 000 BAR / 15 000 PSI ☞ ROTOR 2 800 BAR / 40 000 PSI

SIZES	WEIGHT	ART. NO.
ONE SIZE	0.6 kg	5100047 5000





PRO OPERATOR®

 SINGLE **200 BAR**

 ROTOR **500 BAR**

 3 000 PSI  7 500 PSI

PRO OPERATOR®

We develop and manufacture our clothing in Borås, the capital of textiles as well as the rainiest city in Sweden. The location is absolutely perfect when designing waterproof workwear for demanding

workplaces. Our ProOperator® range protects the operator during high-pressure cleaning up to 500 bar / 7 500 psi. Due to the light, but strong materials, our clothes are comfortable to wear all day long.

ALL DAY COMFORT AND PROTECTION

The ProOperator® range merges comfort and compliance without compromising on protection. Featuring our Athletic Design with innovative fabric use and optimally positioned seams the range provides superior comfort for the operator all through their workday. Strategically placed mesh lining and ventilation zippers improve breathability. Improved fit and pre-bent sleeves and knees increase flexibility.

THE FABRICS

POLYAMID (GREY) / POLYESTER (HI VIS)

The outer shell of the PPE is dirt and water repellent, keeping the operator dry and light. The fabrics have a very high abrasion resistance.

DYNEEMA®

The protective fabric inside the clothing is made of the strongest fiber in the world, 15 times stronger than steel.

SYNTHETIC FIBER-BASED REINFORCEMENT

Reinforcements at the exposed knee areas.

MESH AND POLYESTER LINING

Ventilating mesh lining in the back of the Jacket, Trousers, Overall and Vest makes the clothing airy and comfortable.



DESIGN HIGHLIGHTS

LARGE HOOD

Adjustable and detachable hood in a size compatible with our Head Protection 3 000 bar.

COMFORT FIT

Ergonomic body fit and shoulder design ensuring comfort and flexibility throughout the workday.

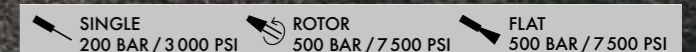
REFRESHING VENTILATION

Ventilation zippers lined with mesh on the Trousers, on the legs of the Overall, and on the back of the Jacket and Overall.

PRE-BENT KNEES AND SLEEVES

Adds even further flexibility to our Overall, Trousers, and Jacket.

PROOPERATOR®



IT'S ALL IN THE DETAILS

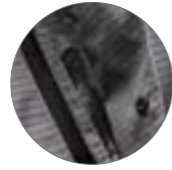
Thoughtful details are often the difference between good and excellent. We know that from working closely with the end users.



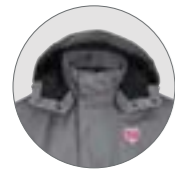
Pre-bent knees and sleeves.



Openable ventilation.



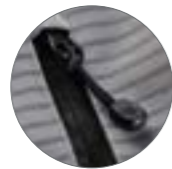
Waterproof zippers with overlapping flaps.



Detachable hood with two adjustment possibilities.



Reinforcements on the knees / pockets for knee pads.



Zipper puller for good grip.

THE WORLD'S STRONGEST FIBER PROTECTS YOU

We use an ultra strong and ultra light fiber – Dyneema®. On a weight for weight basis the fiber is 15 times stronger than steel and up to 40 % stronger than aramids. This enables us to develop protective clothing which are lighter and more comfortable, without compromising on safety and durability.



DYNEEMA®

AREAS WITH PROTECTION

It is essential that the operator knows where and for what the clothes protect. Striped fabric clearly identifies protective areas, and the label tells the level of protection. *See test tables on page 88.*



BE WATERPROOF

The outer material has a DWR (Durable Water Repellent) treatment. This keeps the operator dryer and lighter, and makes the clothes easy to clean. All ProOperator® clothes have waterproof zippers and / or overlapping flaps.



WATER REPELLENT



DIRT REPELLENT

PROOPERATOR®

THREE DIFFERENT LAYERS WORKING TOGETHER

POLYAMIDE (GREY)

Dirt and water repellent.
Durability: 300 000 Martindale.

DYNEEMA®

The world's strongest fiber in protective areas.

MESH AND POLYESTER LINING

Ventilating and comfortable.

DON'T BLEND IN. STAND OUT.

Did you know that most of our ProOperator® products also comes in a high visibility version? The functionality and comfort are exactly the same as the standard ProOperator®. Instead of our grey fabric, we use a hi vis orange fabric with added reflective material. It provides extra safety in workplaces where it is important or required to be highly visible.



HEAD PROTECTION 3 000 BAR

See p. 58

GLOVES 500 BAR

See p. 62

HOSE PROTECTION

See p. 69

JACKET

See p. 44

TROUSERS

See p. 44

BOOTS 1 200 BAR

See p. 66

**WE KEEP EVERY
PART OF THE BODY
SAFE AND SOUND**



JACKET

- Water jet protection on the entire front, arms and hood.
- Two ventilation zippers in the back.
- Lined for high comfort. Comfortable elastic cuffs. Waist adjustable with drawstrings. Adjustable hood.
- Waterproof front zipper with overlapping flap. Essential seams taped.
- Two outer pockets with waterproof zippers. Two inner pockets with zippers.
- CE Regulation (EU) 2016/425



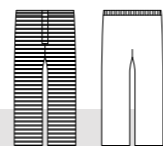
STRIPED AREAS ARE PROTECTED

 SINGLE 200 BAR / 3 000 PSI
  ROTOR 500 BAR / 7 500 PSI
  FLAT 500 BAR / 7 500 PSI

SIZES	WEIGHT	ART. NO.
S-3XL	1.6 kg (SIZE L)	5622025 5024

TROUSERS

- Water jet protection on the entire front.
- Two ventilation zippers in the side seams.
- Detachable elastic braces (included) and adjustable elastic waist for perfect fit. Loops for belt.
- Two outer pockets with waterproof zippers. Essential seams taped.
- Waterproof zippers at the bottom of the legs allow the trousers to widen to facilitate donning the boots. Waterproof zipper in fly with overlapping flap.
- Reinforcements on the knees, and pockets for knee pads (not included).
- CE Regulation (EU) 2016/425



STRIPED AREAS ARE PROTECTED

 SINGLE 200 BAR / 3 000 PSI
  ROTOR 500 BAR / 7 500 PSI
  FLAT 500 BAR / 7 500 PSI

SIZES	WEIGHT	ART. NO.
S-3XL	1.3 kg (SIZE L)	5632025 5024





EN ISO 20471

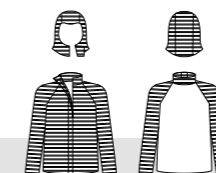


EN ISO 20471



JACKET

- Water jet protection on the entire front, arms and hood.
- Two ventilation zippers in the back.
- Lined for high comfort. Comfortable elastic cuffs. Waist adjustable with drawstrings. Adjustable hood.
- Waterproof front zipper with overlapping flap. Essential seams taped.
- Two outer pockets with waterproof zippers. Two inner pockets with zippers.
- CE Regulation (EU) 2016/425
- High visibility clothing: EN ISO 20471



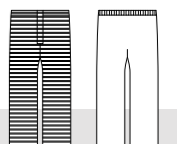
STRIPED AREAS ARE PROTECTED

SINGLE 200 BAR / 3 000 PSI
 ROTOR 500 BAR / 7 500 PSI
 FLAT 500 BAR / 7 500 PSI

SIZES	WEIGHT	ART. NO.
S-3XL	1.6 kg (SIZE L)	5622025 5624

TROUSERS

- Water jet protection on the entire front.
- Two ventilation zippers in the side seams.
- Detachable elastic braces (included) and adjustable elastic waist for perfect fit. Loops for belt.
- Two outer pockets with waterproof zippers. Essential seams taped.
- Waterproof zippers at the bottom of the legs allow the trousers to widen to facilitate donning the boots. Waterproof zipper in fly with overlapping flap.
- Reinforcements on the knees, and pockets for knee pads (not included).
- CE Regulation (EU) 2016/425
- High visibility clothing: EN ISO 20471



STRIPED AREAS ARE PROTECTED

SINGLE 200 BAR / 3 000 PSI
 ROTOR 500 BAR / 7 500 PSI
 FLAT 500 BAR / 7 500 PSI

SIZES	WEIGHT	ART. NO.
S-3XL	1.3 kg (SIZE L)	5632025 5624

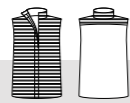
EN ISO 20471



VEST

- Water jet protection on the whole front and upper shoulders.
- Water and dirt repellent, with essential seams taped.
- Comfortable and great for warm environments.
- Waterproof front zipper with overlapping flap.
- Two outer pockets with waterproof zippers.
- CE Regulation (EU) 2016/425
- High visibility clothing: EN ISO 20471

STRIPED AREAS ARE PROTECTED



 SINGLE 200 BAR / 3 000 PSI
  ROTOR 500 BAR / 7 500 PSI
  FLAT 500 BAR / 7 500 PSI

SIZES	WEIGHT	ART. NO.
S-3XL	1 kg (SIZE L)	5620025 5624



PROOPERATOR®






OVERALL

- Water jet protection on the entire front, arms and hood.
- Ventilation zippers at the top and on the legs.
- Lined for high comfort. Comfortable elastic cuffs. Elastic back waist. Adjustable hood.
- Waterproof front zipper with overlapping flap. Essential seams taped.
- Waterproof zippers at the bottom of the legs allow the overall to widen to facilitate donning the boots.
- Two outer pockets with waterproof zippers. Two inner pockets with zippers.
- Reinforcements on the knees, and pockets for knee pads (not included).
- CE Regulation (EU) 2016/425



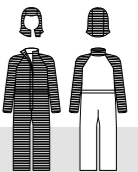
STRIPED AREAS ARE PROTECTED

 SINGLE 200 BAR / 3 000 PSI
  ROTOR 500 BAR / 7 500 PSI
  FLAT 500 BAR / 7 500 PSI



SIZES	WEIGHT	ART. NO.
S-3XL	2.5 kg (SIZE L)	5640025 5024

OVERALL

- Water jet protection on the entire front, arms and hood.
- Ventilation zippers at the top and on the legs.
- Lined for high comfort. Comfortable elastic cuffs. Elastic back waist. Adjustable hood.
- Waterproof front zipper with overlapping flap. Essential seams taped.
- Waterproof zippers at the bottom of the legs allow the overall to widen to facilitate donning the boots.
- Two outer pockets with waterproof zippers. Two inner pockets with zippers.
- Reinforcements on the knees, and pockets for knee pads (not included).
- CE Regulation (EU) 2016/425
- High visibility clothing: EN ISO 20471



STRIPED AREAS ARE PROTECTED

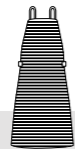
 SINGLE 200 BAR / 3 000 PSI
  ROTOR 500 BAR / 7 500 PSI
  FLAT 500 BAR / 7 500 PSI

SIZES	WEIGHT	ART. NO.
S-3XL	2.6 kg (SIZE L)	5640025 5624



APRON

- Water jet protection on the entire area of the Apron.
- Water and dirt repellent.
- Great in warm environments.
- Adjustable shoulder bands for added comfort and easy donning.
- Easy to put on and take off.
- **CE** Regulation (EU) 2016/425



STRIPED AREAS ARE PROTECTED

SINGLE 200 BAR / 3 000 PSI
 ROTOR 500 BAR / 7 500 PSI
 FLAT 500 BAR / 7 500 PSI

SIZES	WEIGHT	ART. NO.
ONE SIZE	0.8 kg	5623025 5024

ARM PROTECTIONS

- Water jet protection on the entire area of the Arm Protections.
- Elastic cuffs in both ends for easy donning and good fit.
- Sold in pairs.
- **CE** Regulation (EU) 2016/425



STRIPED AREAS ARE PROTECTED

SINGLE 200 BAR / 3 000 PSI
 ROTOR 500 BAR / 7 500 PSI
 FLAT 500 BAR / 7 500 PSI

SIZES	LENGTH	WEIGHT	ART. NO.
ONE SIZE	50 cm	0.35 kg	5602025 5024





ACCESSORIES

UP TO 3 000 BAR



COMPLETE YOUR PROTECTION WITH THE RIGHT PPE ACCESSORIES

STAY SAFE

FROM HEAD TO TOE



**HEAD PROTECTION
3000 BAR**

Page 58



BALACLAVA

Page 61



**HOSE PROTECTION
3000 BAR**

Page 69



**HOSE PROTECTION
500 BAR**

Page 69



**NECK PROTECTION
3000 BAR**

Page 61



**GLOVES
500 BAR**

Page 62



**GAITERS
3000 BAR**

Page 65



**BOOTS
3000 BAR**

Page 65



**BOOTS
1 200 BAR**

Page 66

ACCESSORIES



HEAD PROTECTION 3 000 BAR

- A comfortable Helmet with a Visor and Hearing Protectors.
- All parts are tested up to 3 000 bar / 43 500 psi. The only Head Protection on the market that is tested for high water pressure.
- Hook strap that prevents the helmet from falling off in the event of an accident.
- Hearing Protectors reduce the noise level by up to 33 dB (SNR 32 dB classified).
- Adjustable for optimal protection and fit. 3-point chin strap is included.

Certified in accordance with:

- CE Regulation (EU) 2016/425
- Industrial safety helmets: EN397:2012
- Eye protection: EN166:2001
- Hearing Protection: EN 352-3:2002

STRIPED AREAS ARE PROTECTED



 SINGLE 2 000 BAR / 30 000 PSI
  ROTOR 3 000 BAR / 43 500 PSI

SIZES	ART. NO.
ONE SIZE (53–62 cm)	5102068 5000

PARTS THAT CAN BE ORDERED SEPARATELY

HELMET



ART. NO.

5102168 5000

HEARING PROTECTORS



ART. NO.

5105168 5000

VISOR HOLDER

NOTE! CAN ONLY BE ATTACHED TO TST'S HEARING PROTECTORS



ART. NO.

5103168 5000

VISOR - PACK OF 10



ART. NO.

5104168 5000

CHIN STRAP



ART. NO.

5102190 5000

HELMET SUSPENSION



ART. NO.

5102490 5000



ACCESSORIES



BALACLAVA

- Designed to keep the body dry.
- To be worn on the outside of the clothing.
- The breast bib is made of Cordura® and is fitted with adjustable straps to hold it in place.
- **No protection against water jets (made of neoprene).**

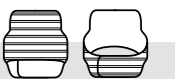
SIZES	ART. NO.
ONE SIZE	5010000 5000



NECK PROTECTION 3 000 BAR

- Excellent complement to the Head Protection 3000 bar.
- Protects the sensitive areas between the Head Protection 3000 bar and the Jacket/Vest.
- Attaches to the rear of Head Protection 3000 bar. Closes with hooks & loops in front of the face.
- Can be worn in or outside the visor.
- Ventilation is recommended.
- **CE Regulation (EU) 2016/425**

STRIPED AREAS ARE PROTECTED



 SINGLE 2000 BAR / 30000 PSI
  ROTOR 3000 BAR / 43 500 PSI

SIZES	WEIGHT	ART. NO.
ONE SIZE	0.3 kg	5110568 5075



GLOVES 500 BAR

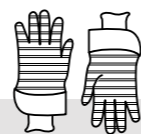
Approximately 90% of the injuries in the industry occur on hands and feet. TST is the only company on the market offering protective gloves that are tested and approved. Our Gloves 500 bar in Dyneema®, the world's strongest fiber, are specially made for water jetting and environments where oil, water and dirt are common. The material and the rough, sand patterned surface dipped in nitrile rubber, make the gloves waterproof and provide the best possible grip. The large cuffs make the glove easy to take off which is important in the event of an accident.

Separate inner gloves in nylon increase comfort and useability. We recommend always using the inner glove as it will provide a better grip and be much more comfortable. Without it, the glove can be experienced as stiff and hard. The inner gloves are washable and are also sold separately so operators can have their personal inner gloves.

The gloves have been tested and classified according to below:
 4 out of 4 in abrasion
 4 out of 4 in tear
 2 out of 4 in puncture resistance
 D out of F in cut resistance TDM (EN ISO 13997)

- Waterproof Gloves with protection up to 500 bar / 7 500 psi.
- Available in two sizes: 9 (about S-M) and 11 (about L-XL).
- Separate inner gloves in nylon for optimal comfort and washability.
- Supplied in 12-pack, including inner gloves. Shelf life up to 3 years.
- **CE** Regulation (EU) 2016/425
- Protective gloves from mechanical risks: EN ISO 388:2016+A1:2018

See test results on p. 88.



STRIPED AREAS ARE PROTECTED

 SINGLE 200 BAR / 3 000 PSI
  ROTOR 500 BAR / 7 500 PSI
  FLAT 500 BAR / 7 500 PSI

SIZES	ART. NO.
9, 11	5600025 5000





GAITERS 3 000 BAR

- To be worn on the outside of regular protective boots.
- The entire area around the leg and the foot is protected.
- Very comfortable and light to wear.
- Easy to adjust for a perfect fit.
- Specific right and left foot designs. Sold in pairs.
- **CE** Regulation (EU) 2016/425



STRIPED AREAS ARE PROTECTED

 SINGLE 2000 BAR / 30000 PSI
  ROTOR 3000 BAR / 43500 PSI

SIZES	WEIGHT	ART. NO.
EUR 36-41, 42-48, 49-52	1.4 kg	5158068 5075



BOOTS 3 000 BAR

- Withstands “everything” within water jetting on account of its fixed aluminium gaiters.
- The gaiters are moulded and jointed, providing excellent comfort and mobility.
- Chem resistant anti-penetration sole.
- Sensitive to small stones and not suitable for uneven ground. For that we recommend the Gaiters.
- **CE** Regulation (EU) 2016/425
- Safety footwear: ISO 20345:2011

See test results on p. 90.



STRIPED AREAS ARE PROTECTED

 SINGLE 2000 BAR / 30000 PSI
  ROTOR 3000 BAR / 43500 PSI

SIZES	WEIGHT	ART. NO.
EUR 42-48	1.9 kg each (SIZE 42)	5052080 5000



BOOTS 1 200 BAR

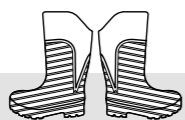
NEW!

- Water jetting boots with protection against high-pressure water jets: 300 bar single nozzle, 1200 bar rotary nozzle.
- Waterproof.
- Durable rubber construction with a textile inner lining.
- Designed to provide a comfortable and secure fit for all-day use.
- Steel toe cap and steel puncture-resistant midsole.
- Outsole is designed to provide reliable grip on wet and demanding surfaces.

Certified in accordance with:

- CE Regulation (EU) 2016/425
- Safety footwear: EN ISO 20345:2022+A1:2024

STRIPED AREAS ARE PROTECTED



🔧 SINGLE 300 BAR / 4 350 PSI

🌀 ROTOR 1 200 BAR / 17 400 PSI

SIZES

EUR 38-48

ART. NO.

5654027 5011



ACCESSORIES



HOSE PROTECTION

The greatest risk areas of a hose break are near or on the water jet gun; areas often very close to the operator and near sensitive areas of the body, such as the abdomen, the arm pit or the neck. These are difficult areas to properly protect.

The Hose Protection, placed on the hose at the connection to the lance, protects the operator if a coupling or a hose breaks or if a pinhole leak occurs. In many countries, the use of hose protection is mandatory. And in some countries a whip stop is also required. Check the rules and regulations in your region.

We recommend at least 1 400 mm/4.6 ft length. With this length, the operator has the best possible protection of the body. Also, the Hose Protection lies on the ground which means the operator doesn't have to carry the weight.



SWIVEL

Hose Protection with swivel makes work easier and more ergonomic. Operators experience less strain on the body, as the swivel rotates freely around the Hose Protection's steel collar and follows the operator's movement. We highly recommend using our Hose Protection with swivel!



SOLID STEEL COLLAR

Closest to the lance, where the hose is most likely to break, there is a 250 mm / 9.8 in. solid steel collar on the Hose Protection 3 000 bar range, which effectively protects the operator in the event of an accident.



HOSE PROTECTION 3000 BAR

- Provides effective protection for the operator. Tested for 3 000 bar / 43 500 psi. *See test results on p. 90.*
- An adjustable strap holds the Hose Protection to the lance.
- Metal ring at the bottom, a wear and tear protection for when the hose is on the ground.

HOSE PROTECTION Ø 36 MM			
LENGTH		ART. NO.	MOD. NO.
750 mm	2.5 ft	5060040	5920
1400 mm	4.6 ft	5060040	5940
1800 mm	5.9 ft	5060040	5960
HOSE PROTECTION Ø 38 MM PIPE EXTENSION 260MM			
1400 mm	4.6 ft	5060043	5940
HOSE PROTECTION Ø 47 MM SWIVEL BEST SELLER			
1400 mm	4.6 ft	5060050	5942
HOSE PROTECTION Ø 47 MM PIPE EXTENSION 185 MM			
750 mm	2.5 ft	5060051	5920
HOSE PROTECTION Ø 59 MM			
750 mm	2.5 ft	5060060	5920
1400 mm	4.6 ft	5060060	5940
1800 mm	5.9 ft	5060060	5960

HOSE PROTECTION 500 BAR

- Provides effective protection for the operator. Tested for 500 bar/7 500 psi. *See test results on p. 90.*
- An adjustable strap holds the Hose Protection securely in place.
- Very smooth and flexible.

HOSE PROTECTION Ø 41 MM/1.6 IN.		
LENGTH		ART. NO.
750 mm	2.5 ft	5660045 5920
1400 mm	4.6 ft	5660045 5940
HOSE PROTECTION Ø 65 MM/2.6 IN.		
LENGTH		ART. NO.
750 mm	2.5 ft	5660063 5920



HOSE CONNECTION COVER

The Hose Connection Cover protects people working near, or passing by, foot pedals and pumps. Is to be used where hoses have couplings and connections. Does not replace a Hose Protection near the body, when using a water jet gun.

- An adjustable strap holds the Connection Cover securely in place.
- Loops to further fasten and assemble several covers.
- Tested for hose bursts at 3 000 bar / 43 500 psi, but not for pinhole leaks.

See test results on p. 90.

Ø 61 MM / 2.4 IN.					
LENGTH		WEIGHT		ART. NO.	MOD. NO
40 cm	1 ft 4 in	0.4 kg	0.9 lbs	5071000	5910
500 cm	16 ft 5 in	3.8 kg	8.4 lbs	5071000	5978



WHIP STOP

For securing hose ends at foot pedals, pumps or connections. Catches the broken hose and prevents it from whipping. Mounted by slipping it over the hose ends, stretching it and finally tightening the ends, securing with the rubber lock rings.

- Made in strong polyester. Easy to carry, easy to clean.
- Tensile strength 30 kN / 3 tons.
- Width approx 25 mm / 1 in.
- Sold in packs of 50 pcs.
- Produced and tested in accordance with EN 12195-2.

TENSILE STRENGTH	LENGTH		ART. NO.
30 000 N	Approx. 75 cm	Approx. 2.5 ft	5072000 5000



An aerial photograph of an industrial site, possibly a ship's deck or a large-scale construction area. The ground is dark and appears to be wet or recently cleaned. Several workers in bright red protective suits and orange helmets are visible. One worker is inside a green, box-like safety enclosure. Another worker is in the foreground, holding a long red hose. A large green tarp is partially visible, secured with white ropes. The background shows various pieces of industrial machinery and equipment. A large green rectangular box with white diagonal lines is overlaid on the right side of the image, containing the text 'WORKPLACE SAFETY SOLUTIONS' in white, bold, sans-serif font.

WORKPLACE SAFETY SOLUTIONS

Our Workplace Safety Solutions provide smart and effective protection for both people and equipment during water jetting operations. The products are designed for easy assembly, handling, cleaning, and

storage, saving valuable time and money. Within our WSS range, you'll find products engineered to secure and screen off work areas, collect dirty water, and protect equipment from wear and tear.

MINIMIZE THE SAFETY AREA

Safety areas around high-pressure water jobs must be established. Our Safety Booth and Safety Curtain enable several operators to work closer together without compromising safety. The Safety Curtain can be quickly linked to create effective barriers, offering a lightweight and more efficient alternative to steel or wooden boards. This reduces the required safety area to 1.5 meters from the hazard, protecting people, machinery, vehicles, and electronics outside the barrier.



1,5 M
SAFETY AREA



CAN BE LINKED
TOGETHER

PROTECTION LEVEL

The fabric in the WSS products have been tested to withstand:

- Water jets up to 3 000 bar / 43 500 psi, 43 l/m, distance: 1.5 m
- Water jets up to 1 100 bar / 16 000 psi, 100 l/m, distance: 2.3 m
- Water jets up to 1 400 bar / 20 300 psi, 40 l/min, distance 75 mm
- Steel bullet 6 mm, 120 m/s
- Stone shot 360 g, 13 m/s

See test tables on page 91.



STEEL BULLET
TESTED



STONE SHOT
TESTED

MADE IN DURABLE TECHSTEEL™

Our Workplace Safety Solution range is made of an extremely strong fabric called Techsteel™. The fabric is both dirt and water repellent, which makes the products easy to clean. The material is furthermore reinforced with Vectran® (LCP) for maximum strength and durability. The request for these qualities comes originally from the industry of concrete removal and demolition.

Durability: > 500 000 Martindale.



WATER REPELLENT



DIRT REPELLENT



VECTRAN®

TIME- AND COST-SAVING

Our Workplace Safety Solutions not only enhance workplace safety but also saves valuable time and costs by minimizing the need for site cleanup. This is thanks to innovative designs that contain water and debris within a controlled area or collect it directly in containers.





SAFETY FUNNEL

- Increases safety when cleaning heat exchangers.
- Prevents flying objects and water from hitting and injuring people and damaging equipment.
- Improves visibility by reducing the amount of steam and water jets around the heat exchanger.
- The waste water flows out through the Safety Funnel's outlet and can be collected in tanks or septic trucks. Outlet size: approx. Ø 10 cm
- Minimizes the need for site sanitization, resulting in valuable time and cost savings.
- Quick and easy application directly to the heat exchanger.
- Eliminates the need for built protection with e.g. wooden boards or plates.
- Reduces the noise level.
- Easy to clean thanks to the silicon treated Techsteel™ fabric that dirt particles don't stick to.

See test results on p. 91.

 TUBE CLEANING NOZZLE 1 400 BAR / 20300 PSI

PRODUCT SIZE		HEAT EXCHANGER SIZE		ART. NO.
Ø 70 cm	Ø 27.5 in	approx. Ø 40–70 cm	Ø 15.8–27.5 inch	5830010 8070
Ø 145 cm	Ø 57 in	approx. Ø 71–145 cm	Ø 28–57 inch	5830010 8145
Ø 185 cm	Ø 72.8 in	approx. Ø 146–185 cm	Ø 57.5–72.8 inch	5830010 8185



SAFETY PIPE CAP

- Increases safety when cleaning pipes.
- Prevents flying objects and water from hitting and injuring people and damaging equipment.
- Improves visibility by reducing the amount of steam and water jets around the pipes.
- The waste water flows out through the Safety Pipe Cap's outlet and can be collected in tanks or septic trucks. Outlet size: approx. Ø 5 cm on the 10 and 30 diameter Pipe Cap, and approx. Ø 10 cm on the 70 and 145 cm Pipe Cap.
- Minimizes the need for site sanitization, resulting in valuable time and cost savings.
- Quick and easy application directly to the pipe. Eliminates the need for built protection with e.g. wooden boards or plates.
- Reduces the noise level.
- Easy to clean thanks to the silicon treated Techsteel™ fabric that dirt particles don't stick to.

See test results on p. 91.

 TUBE CLEANING NOZZLE 1 400 BAR / 20300 PSI

PRODUCT SIZE		PIPE SIZE		ART. NO.
Ø 10 cm	Ø 3.9 in	approx. Ø 5–10 cm	Ø 2–4 inch	5830020 8010
Ø 30 cm	Ø 11.8 in	approx. Ø 11–30 cm	Ø 4.3–11.8 inch	5830020 8030
Ø 70 cm	Ø 27.5 in	approx. Ø 40–70 cm	Ø 15.8–27.5 inch	5830020 8070
Ø 145 cm	Ø 57 in	approx. Ø 71–145 cm	Ø 28–57 inch	5830020 8145



SAFETY BOOTH

- Provides a safe and comfortable work environment for the operator, with shelter from water, wind, sun, rain, hail, and snow. Add your own fan or heater for additional comfort.
- Made of extremely durable Techsteel™ fabric.
- Measurements: height: approx. 215 cm, length and width: 101 x 101 cm.
- Four straps for anchoring on each of the two sides of the booth.
- Foldable and easy to assemble and disassemble.
- Easy to clean thanks to the silicon treated Techsteel™ fabric that dirt particles don't stick to.
- Possible to connect to the Safety Curtain.

See test results on p. 91.



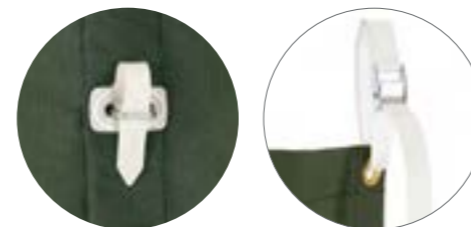
SINGLE 3 000 BAR / 43 500 PSI			
SIZE		WEIGHT	ART. NO.
215 x 101 x 101cm	85 x 40 x 40 inch	20.4 kg	5850012 5000



SAFETY CURTAIN

- Can be put together to form a protective wall of desired length. Each section is approx. 152 x 250 cm / 5x8.2 ft and when put together they build 147 cm / 4.8 ft per curtain.
- Straps on top for easy mounting and holes at the bottom for further securing.
- The sections are easy to connect with strong, easily handled locks.

See test results on p. 91.



SINGLE 3 000 BAR / 43 500 PSI			
SIZE		WEIGHT	ART. NO.
152 x 250 cm	5 x 8.2 ft	2.2 kg	5800010 5885

ROBOT GUARD

- Protects the hydrodemolition robot's hood from gravel spray and debris from concrete.
- Available in two versions: for Aquajet's hydrodemolition robots Aqua Cutter 410 and Aqua Cutter 750.
- Quick and easy application to the hood with strong magnets.
- An access flap at the rear can be opened for easy access to the control panel.
- Easy to clean thanks to the silicon treated Techsteel™ fabric that dirt particles don't stick to.

MODEL	ART. NO.
Aquajet Aqua Cutter 410	5860010 4410
Aquajet Aqua Cutter 750	5860010 4750



SCUFF GUARD 70 CM

- Protects valuable hoses and cabling for e.g. hydrodemolition robots from wear and tear.
- Made in extremely durable Techsteel™ fabric.
- 70 cm length, Ø 12 cm
- Easy to mount as it is closed with hooks & loops.
- Eyelets for fastening at the ends. Several Scuff Guards can be linked together.
- **No protection against hose burst nor pinhole leaks.**

LENGTH	Ø	ART. NO.
70 cm 2.3 ft	12 cm / 4.7 inch	5880060 5918

SCUFF GUARD 500 CM

- Protects valuable hoses from wear and tear.
- Made in extremely durable Techsteel™ fabric.
- 500 cm length, Ø 5,5 cm
- Designed as a tube - slides over the hose.
- Eyelets for fastening at the ends. Several Scuff Guards can be linked together.
- Can be pushed together so that a 5 m Scuff Guard fits a e.g. 4 m hose.
- **No protection against hose burst nor pinhole leaks.**

LENGTH	Ø	ART. NO.
500 cm 16.4 ft	5,5 cm / 2.2 inch	5880050 5978



END TO END HOSE PROTECTION

Working with high water pressure entails a constant risk of accidents. While protective clothing helps keep the operator safe, achieving full protection for both personnel and nearby equipment requires addressing a common

source of accidents: the hose. At TST Sweden we offer complete hose protection all the way from one end to another, ensuring maximal safety for all.

WHIP STOP

The coupling on the gun connection can break. If that happens the Whip Stop catches the hose and prevents it from whipping and thus harming the operator.

OPERATOR

HOSE PROTECTION

The hose can break close to parts of the operator's body that are difficult to protect with clothing, such as the abdomen, armpit and neck. In case of hose breakage and pinhole leaks, the Hose Protection protects the operator from harm.

PUMP

CONNECTIONS

WHIP STOP + HOSE CONNECTION COVER

Couplings sometimes breaks, e.g. by hose connections, pumps or dump valves. If so, the Whip Stop secures the hose and keeps it from whipping and hitting people passing by. In case of a hose break, the Hose Connection Cover protects.

DUMP VALVE

SHARP EDGE

SCUFF GUARD

Expensive hoses can be worn out and tear when rubbed on sharp edges and other rough surfaces. The Scuff Guard protects hoses and increases their longevity.





SAFETY AND TECHNICAL INFO

SAFETY FIRST

Is it really necessary to always use PPE (Personal Protective Equipment) when working with high-pressure cleaning or water jetting? Before you answer, read this.

Your eyes are at risk of damage already at a pressure of 7 bar / 100 psi and above. Skin penetration may occur from 80 bar / 1 160 psi. High-pressure cleaning uses approximately 200 bar / 2 900 psi. In water jetting the pressure is 1 200 bar / 17 400 psi or more, that's enough to cut through concrete! What it could do to the human body isn't hard to imagine. Unfortunately we have seen these effects. That is why our motto is "Saving Lives".

Water jetting can be dangerous even if you do everything right. Accidents happen when you least expect them to. Hoses

burst and couplings break. Even the most experienced worker may slip. That's why you should never allow exemptions from wearing PPE even for jobs that "will only take a few minutes". If you are within an area of about 25 meters radius from high water pressure activities – regardless of it being performed by a colleague, a robot, or an automated solution – we highly recommend that you use PPE.

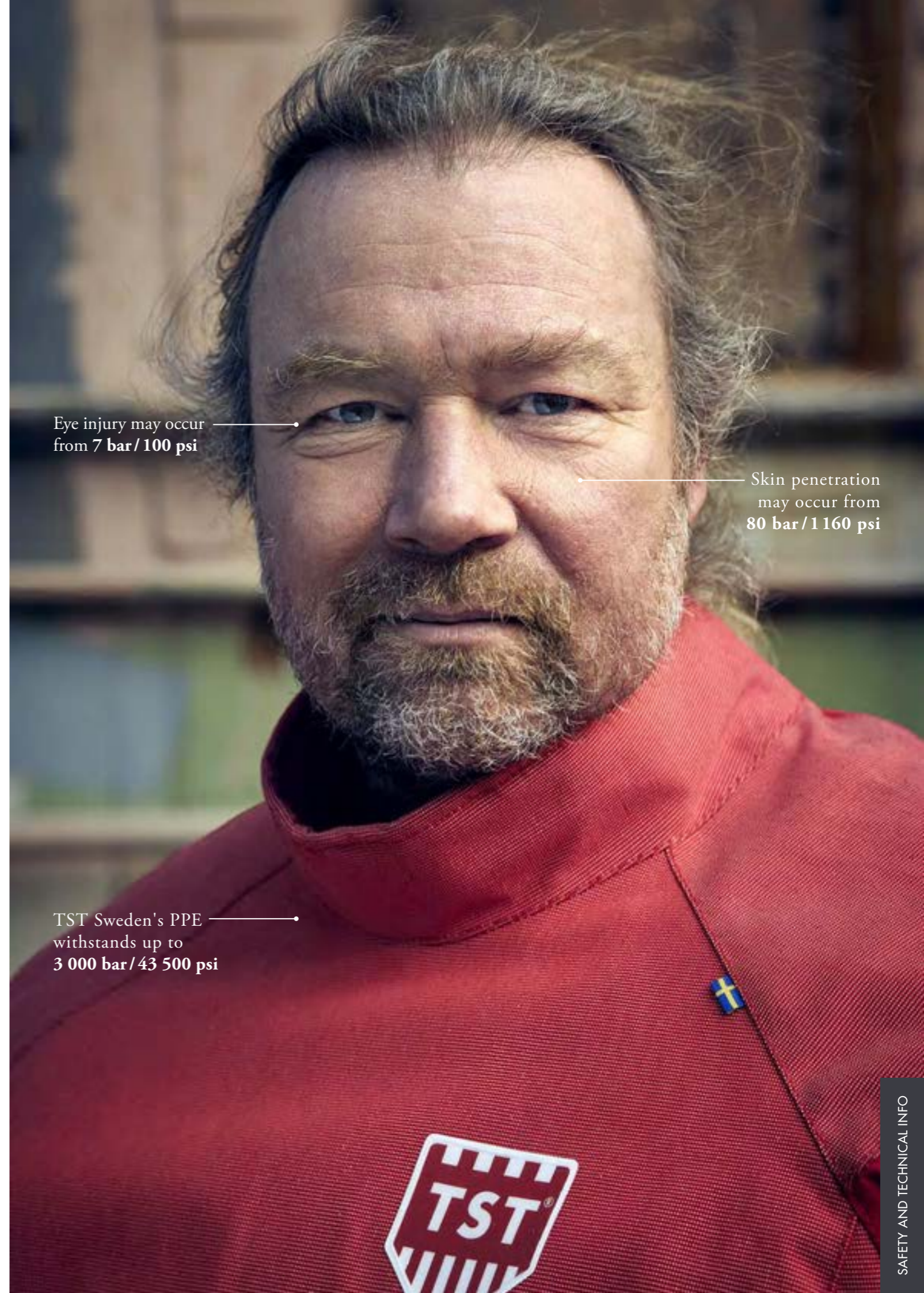
Employers have obligations concerning the provision and use of PPE at work. By using our products, you will contribute to a safer workplace where the workers safety and welfare is highly valued. Make sure that your employees get to go home to their loved ones, every day – and are fit for work again the next day.

CE All of our personal protective equipment is certified in accordance with Regulation (EU) 2016/425. TST Sweden is also certified in accordance with ISO 9001:2015 and ISO 14001:2015 – important tools for ensuring the quality of our products and our work to lay the foundation for positive environmental development.

Eye injury may occur from 7 bar / 100 psi

Skin penetration may occur from 80 bar / 1 160 psi

TST Sweden's PPE withstands up to 3 000 bar / 43 500 psi



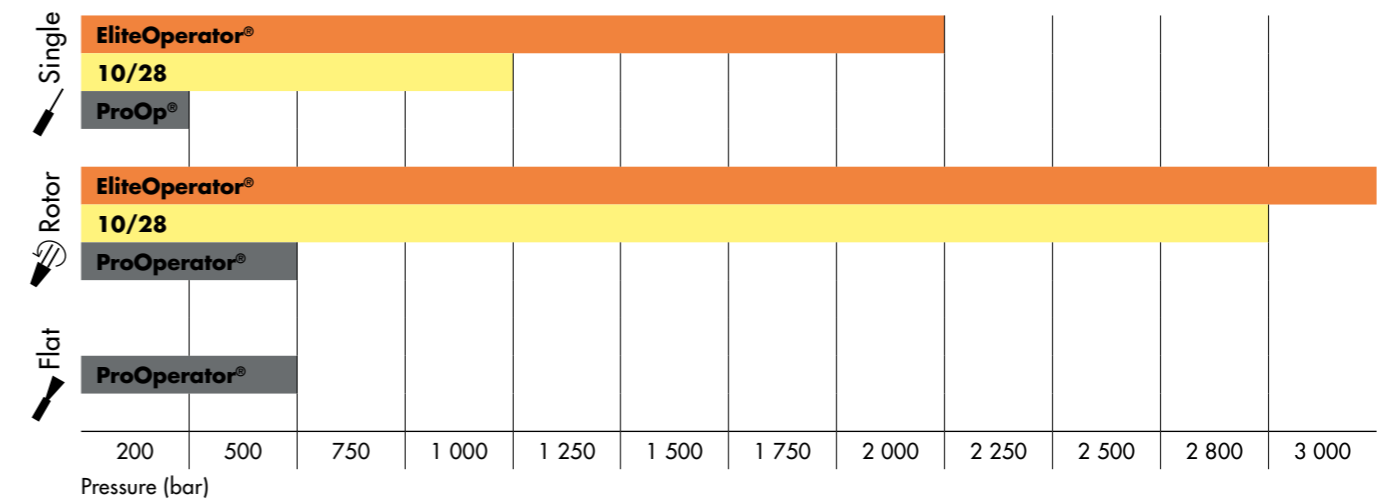
TEST RESULTS

TEST RESULTS - PROTECTION LEVELS

How to read the test results: There is no international standard for the testing of protection levels. Therefore the testing can differ significantly between companies. For this reason it is crucial to be aware of the differences and how and what to properly compare. A protection level of eg. 3 000 bar can mean different things, depending on the pressure, flow, nozzle, distance or speed used while testing. To verify the protective

qualities we have chosen the most common working conditions when performing our tests of notified body. Most nozzles perform at their best between 50 and 100 mm, therefore we have chosen the distance of 75 mm. Rotating tests have been performed with two nozzles (adding more nozzles result in a lower overall impact). On this and the next spread, you can read how our products are tested.

GUIDE - PROTECTION LEVELS PPE



PROTECTIVE CLOTHING

Product category	Pressure		Flow		Nozzle			RPM Revolutions per minute	Distance		Linear speed		Result	
	Bar	Psi	Litre/minute	Gallon/minute	Type	Quantity	Diameter mm		Diameter in	mm	in	m/s		in/sec
EliteOperator®	2 000	30 000	17.9	4.7	Single	1	0.8	0.031	-	75	3	0.5	20	No penetration
EliteOperator®	3 000	43 500	19.5	5.2	Rotor	2	0.6	0.024	3 000	75	3	0.5	20	No penetration
10/28	1 000	15 000	19.8	5.2	Single	1	1.0	0.039	-	75	3	0.5	20	No penetration
10/28	2 800	40 000	18.8	5.0	Rotor	2	0.6	0.024	3 000	75	3	0.5	20	No penetration
ProOperator®	200	3 000	10.7	2.8	Single	1	1.1	0.04	-	75	3	0.5	20	No penetration
ProOperator®	500	7 500	16.9	4.5	Rotor	1	1.1	0.04	N/A	75	3	0.5	20	No penetration
ProOperator®	500	7 500	16.9	4.5	Flat	1	1.1	0.04	-	75	3	0.5	20	No penetration

Note! The tests simulate conditions of a hypothetical accident. Different values, eg. pressure, flow, nozzle, distance or speed, can give significantly different results!

OVERVIEW – PROTECTION LEVELS CLOTHING

Product category	Single		Rotor		Flat	
	Bar	Psi	Bar	Psi	Bar	Psi
EliteOperator	2 000	30 000	3 000	43 500	-	-
10/28	1 000	15 000	2 800	40 000	-	-
ProOperator	200	3 000	500	7 500	500	7 500

HEAD PROTECTION 3000 BAR

Pressure		Flow		Nozzle				RPM	Distance		Linear speed		Result
Bar	Psi	Litre/minute	Gallon/minute	Type	Quantity	Diameter mm	Diameter in		mm	in	m/s	in/sec	
2 000	30 000	17.9	4.7	Single	1	0.8	0.031	-	75	3	0.5	20	No penetration
3 000	43 500	19.5	5.2	Rotor	2	0.6	0.024	3 000	75	3	0.5	20	No penetration

BOOTS 3000 BAR

Pressure		Flow		Nozzle				RPM	Distance		Linear speed		Result
Bar	Psi	Litre/minute	Gallon/minute	Type	Quantity	Diameter mm	Diameter in		Revolutions per minute	mm	in	m/s	
2 000	30 000	17.9	4.7	Single	1	0.8	0.031	-	75	3	0.5	20	No penetration
3 000	43 500	19.5	5.2	Rotor	2	0.6	0.024	3 000	75	3	0.5	20	No penetration

BOOTS 1 200 BAR

Pressure		Flow		Nozzle				RPM	Distance		Linear speed		Result
Bar	Psi	Litre/minute	Gallon/minute	Type	Quantity	Diameter mm	Diameter in		Revolutions per minute	mm	in	m/s	
300	4 350	13.1	3.5	Single	1	1.1	0.04	-	75	3	0.5	20	No penetration
1 200	17 400	12.3	3.25	Rotor	2	0.6	0.02	~1500	75	3	0.5	20	No penetration

HOSE PROTECTION

Product	Diameter		Burst test			Pinhole leak test	
	mm	inch	Bar	Psi	Result	Tested	Result
Hose Protection 3000	36, 47, 59	1.42, 1.85, 2.32	3 000	43 500	No penetration	Yes	No penetration
Hose Connection Cover	61	2.40	3 000	43 500	No penetration	No	-
Hose Protection ProOperator	41	1.61	1 800	26 100	No penetration	No	-
Whip Stop	-	-	-	-	30 kN	-	-

WORKPLACE SAFETY SOLUTIONS

HIGH-PRESSURE WATER JET TEST

Test is relevant for	Pressure		Flow		Nozzle	Newton	Distance		Result
	Bar	Psi	Litre/minute	Gallon/minute			mm	ft	
Safety Curtain	1 100	16 000	100	26.4	Single	740	2.3 m	7.5 ft	No penetration
Safety Curtain	3 000	43 500	43	11.4	Single	550	1.5 m	5 ft	No penetration
Safety Funnel	1 400	20 300	40	10.5	Tube nozzle	350	75 mm	3 in	No penetration
Safety Pipe Cap	1 400	20 300	40	10.5	Tube nozzle	350	75 mm	3 in	No penetration
Safety Booth	3 000	43 500	43	11.4	Single	550	1.5 m	5 ft	No penetration

PROJECTILE TEST

Projectile	Linear speed		Number of textile layers	Result	ISO Standard
	m/s	ft/sec			
Steel bullet, 6 mm	120	393.7	1	No penetration	EN ISO 168
Stone shot, 360 g	13	42.7	1	No penetration	EN ISO 1794-1

TECHNICAL DESCRIPTION

ELITEOPERATOR®

Outer material: DWR (Durable Water Repellent) treated Techsteel™. **Inner material:** Polyester mesh. **Protective material:** Special fabric containing Dyneema® fiber. Seams are taped. **CE-marking:** Approved according to the Regulation (EU) 2016/425.

HEAD PROTECTION 3000 BAR

Helmet is made of fiberglass reinforced polyamide. Temperature range -30° to +150°. Recommended life span 3–5 years. **CE-marking:** Approved according to Industrial safety helmets: EN397:2012. Eye protection: EN166:2001. Hearing Protection: EN 352-3:2002 and Regulation (EU) 2016/425.

10/28

Outer material: DWR (Durable Water Repellent) treated polyamide. **Inner material:** Polyester mesh. **Protective material:** Special fabric containing Dyneema® fiber. Seams are taped. **CE-marking:** Approved according to the Regulation (EU) 2016/425.

PROOPERATOR®

Outer material: DWR (Durable Water Repellent) treated polyamide (grey), polyester (hi vis). **Inner material:** Polyester mesh. **Protective material:** Special fabric containing Dyneema® fiber. Essential seams are taped. **CE-marking:** Approved according to the directive Regulation (EU) 2016/425.

WORKPLACE SAFETY SOLUTIONS

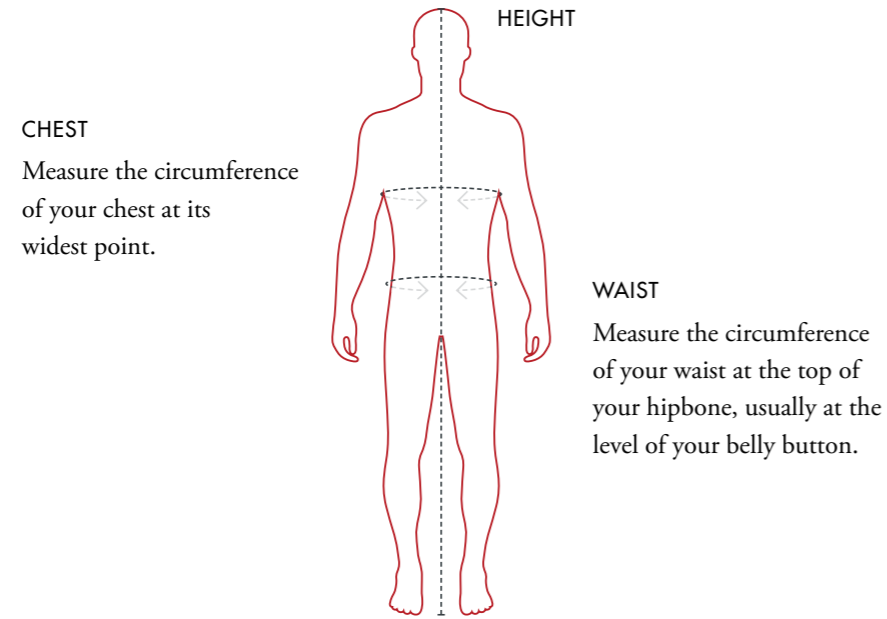
Material: DWR (Durable Water Repellent) treated Techsteel™.

MARTINDALE ABRASION TEST

The Martindale abrasion test simulates natural wear of a textile, in which the textile sample is rubbed against a standard abrasive surface with a specified force. Domestic cotton fabrics often have a rating of 20 000 rubs and polyester fabrics have 30 000.

The Techsteel™ glossy fabric in EliteOperator® and Workplace Safety Solutions has over 500 000. The outer fabric in 10/28 and ProOperator has a rating of 300 000. The method for Martindale test is EN ISO 12947-1:1998.

SIZING TABLES



CLOTHING

SINGLE SIZES

Sizes (Mens)	Height		Chest		Waist	
	cm	ft and inch	cm	inch	cm	inch
XS	168 - 180	5' 6" - 5' 11"	84 - 88	33 - 35	72 - 76	28 - 30
S	168 - 184	5' 6" - 6' 1/2"	92 - 96	36 - 38	80 - 84	31 - 33
M	168 - 184	5' 6" - 6' 1/2"	98 - 104	39 - 41	88 - 92	34 - 37
L	176 - 192	5' 9" - 6' 4"	108 - 112	42 - 44	97 - 102	38 - 41
XL	176 - 192	5' 9" - 6' 4"	116 - 120	45 - 48	108 - 114	42 - 45
2XL	187 - 206	6' 2" - 6' 9"	124 - 128	49 - 51	120 - 126	47 - 50
3XL	187 - 206	6' 2" - 6' 9"	132 - 136	52 - 54	132 - 138	52 - 55

DOUBLE SIZES

Sizes (Mens)	Height		Chest		Waist	
	cm	ft and inch	cm	inch	cm	inch
S/M	168 - 184	5' 6" - 6' 1/2"	92 - 104	36 - 41	80 - 92	31 - 37
L/XL	176 - 192	5' 9" - 6' 4"	108 - 120	42 - 48	97 - 114	38 - 45
2XL/3XL	187 - 206	6' 2" - 6' 9"	124 - 136	49 - 54	120 - 138	47 - 55
4XL/5XL	187 - 206	6' 2" - 6' 9"	140 - 152	55 - 60	144 - 162	56 - 64

BOOTS 3000 BAR

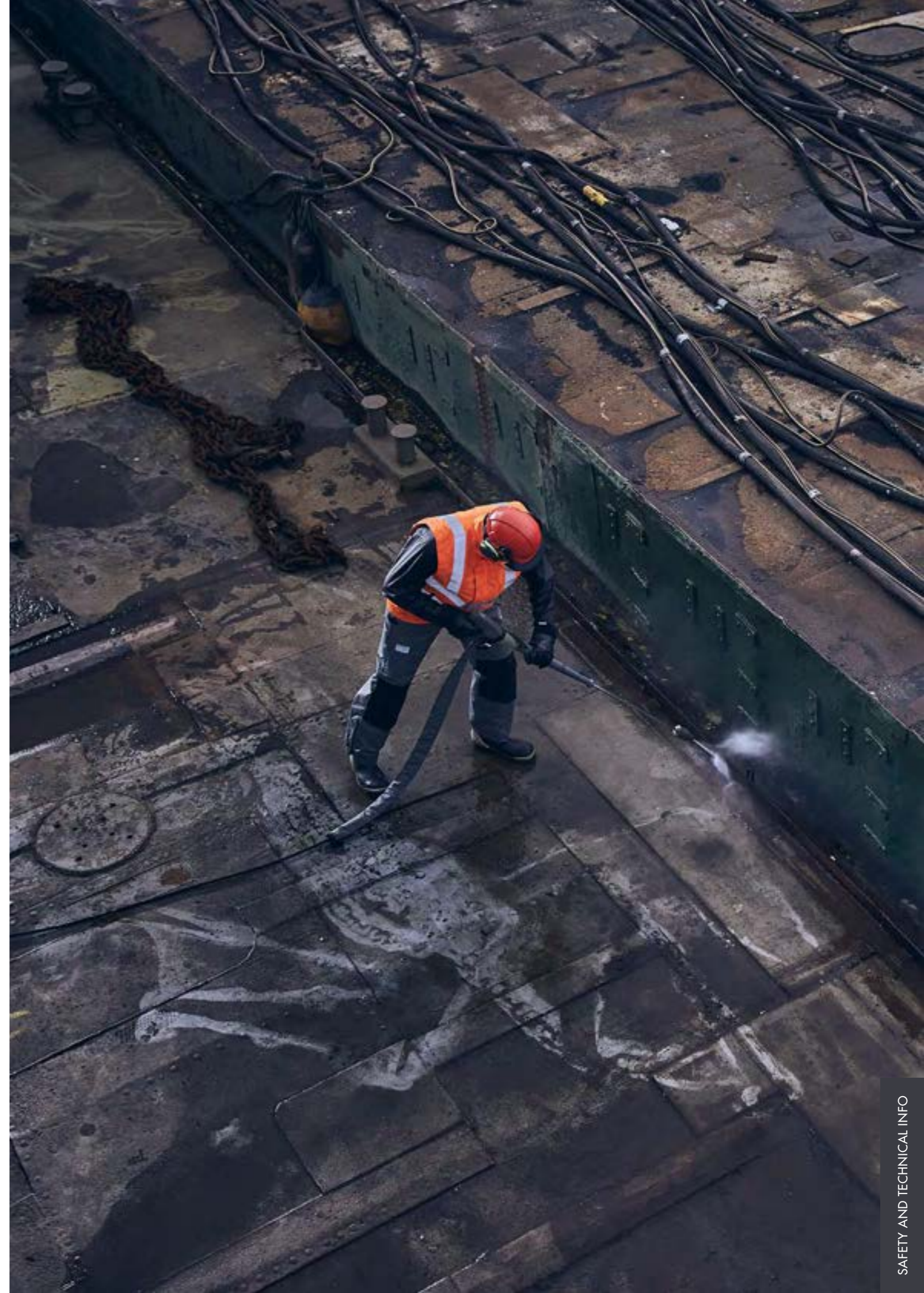
EUR	US	UK
42	9	9
43	9 1/2	9 1/2
44	10	10
45	10 1/2	10 1/2
46	11	11
47	12	12
48	13	13

BOOTS 1 200 BAR

EUR	US	UK	LENGTH OF INSOLE (mm)
38	5 1/2	4 1/2	253,4
39	6 1/2	5 1/2	260
40	7	6	266,7
41	8	7	273,3
42	8 1/2	7 1/2	280
43	9 1/2	8 1/2	286,7
44	10	9	293,3
45	11	10	300
46	11 1/2	10 1/2	306,6
47	12 1/2	11 1/2	313,3
48	13 1/2	12 1/2	320

GAITERS

EUR	US	UK
36 - 41	4 - 8	4 - 8
42 - 48	9 - 13	9 - 13
49 - 52	14 - 16	14 - 16



VENTILATION & COOLING

VENTILATION VEST

Staying comfortable while performing strenuous work like water jetting in warm environments can be a challenge. The new Ventilation Vest provides an ideal solution by effortlessly adding ventilation to your workwear. Lightweight and flexible, this stand-alone garment fits easily under any jacket, vest, or apron. With a simple connection to a compressor via its 6.3 mm integrated hose, it provides constant cooling, helping operators stay focused and comfortable throughout the workday.

ART. NO.

5198010 5000



COOLING VEST

Effectively and gently cooling the body.

Our Cooling Vest helps operators perform at their best for a longer period. The technology is unique and based on special energy Temptech® elements. The elements absorb heat from the body, providing an effective and gentle cooling for 90 minutes in 60 °C and four hours in 45 °C. The elements recharge without an external energy source: 2–3 hours in 22 °C, 30 minutes in 8 °C and just 5–10 minutes in a freezer or in iced water.

Explore the Cooling vest range on the next spread.



VENTILATION

We have taken comfort to the next level with the option to add ventilation in our EliteOperator® and 10/28 Trousers and Overall. This solution allows compressed air to flow through the clothing, cooling the operator during the entire work shift.

To make maximum use of the ventilation a continued airflow of 250–400 l/minute (9–14 CFM) at 7 bar is required. Also, smaller compressors can be used if there is a possibility to regulate the airflow.



ART. NO.

Trousers	5198000 5030
Overall	5198000 5040



RECHARGES WITHOUT AN EXTERNAL ENERGY SOURCE

To recharge the Temptech® elements, simply store the Cooling Vest at normal room temperature. No external energy source is needed! In lower temperatures, charging is faster.





VENTILATION VEST

- Provides efficient ventilation with a constant airflow by connecting the integrated hose to a compressor.
- Keeps the operator cool and comfortable throughout the entire work shift.
- Designed as a standalone ventilated garment; it can be worn under any jacket, vest or apron.
- Size-adjustable thanks to double-button design.
- Lightweight and easy to wear, allowing for full mobility and flexibility on the job.
- Ideal for hot and demanding environments, reducing heat stress and increasing comfort.
- Washable in 40°C / 104°F.
- The inner diameter of the integrated hose is 6.3 mm. Hose coupling is not included.

SIZES	WEIGHT	ART. NO.
S/M, L/XL, 2XL/3XL	0.6 kg	5198010 5000



MULTI

- Reduces heat stress and improves comfort during physical work and hot working conditions.
- Effective and gentle cooling thanks to the unique Temptech® technology that absorbs heat from the body.
- Recharges without an external energy source.
- 20 Temptech® energy elements included.
- Closes with hooks & loops.
- Designed to fit close to the body, with a soft and stretchable fabric.
- Purchase an additional set of Temptech® energy elements to enable continued use without waiting for recharging.

SIZES	WEIGHT	ART. NO.
S/M-4XL/5XL	2.0 kg	3020P60 3313



FLEXI

- Reduces heat stress and improves comfort during physical work and hot working conditions.
- Effective and gentle cooling thanks to the unique Temptech® technology that absorbs heat from the body.
- Recharges without an external energy source.
- 16 Temptech® energy elements included.
- Closes with a wide elastic band for a secure and comfortable fit.
- One size, designed to fit multiple users.
- Designed to fit close to the body, with a soft and stretchable fabric.
- Purchase an additional set of Temptech® energy elements to enable continued use without waiting for recharging.

SIZES	WEIGHT	ART. NO.
ONE SIZE - XS-XL	1.8 kg	3020P60 3310



TEMPTECH® ELEMENTS

- Temptech® C28 is a salt hydrate based Phase Change Material with a transition temperature of 28 °C / 82 °F.
- Delivered in aluminium foil elements. Its main components are sodium sulphate, water and additives.
- Purchase an additional set of Temptech® energy elements to enable continued use without waiting for recharging.

	ART. NO.
1 ELEMENT	3090280 3920
20 ELEMENTS (COMPLETE SET MULTI)	3091P28 3313
16 ELEMENTS (COMPLETE SET FLEXI)	3091P28 3310

CLEAN & CARE

CLEAN AND CARE INSTRUCTIONS

Our clothes can be hand cleaned with a brush and TST Grease Remover or a soap solution. Rinse with clean water. Allow to dry on a hanger in a well ventilated area.

Store the garments dry and out of direct sunlight. Zippers and hooks & loops are sensitive to dirt and should always be kept clean.

To extend the lifespan of the garments, we recommend rain and/or chemical protection on the outside of the garments in exposed environments. If garments are exposed to chemicals; rinse directly with clean water.

- ✓ HAND CLEAN
- ✗ DO NOT BLEACH
- ✗ DO NOT TUMBLE DRY
- ✗ DO NOT IRON
- ✗ DO NOT DRYCLEAN



TST GREASE REMOVER

- Grease Remover, specially formulated for TST clothing.
- Mixed with warm water 1:10 and applied to the soiled garment with a brush.

SIZES	ART. NO.
0.5 litre	5092000 5010
2.5 litre	5092000 5020

SAVING LIVES THROUGH SUSTAINABILITY

Our promise to our customers and their families is to save lives. As we contribute to safer workplaces around the world, we are also committed to minimizing our impact on the planet – a responsibility that drives us on a continuous journey of improvement. Through thoughtful choices and genuine dedication, we aim to support sustainable development.

Guided by the UN global goals

The UN's global goals are essential guideposts for sustainable development, and TST is committed to supporting them. Goal 8.8: *Protect labor rights and promote safe working environments* is more than a guideline to us – it is the very reason TST exists and the core of our mission. As a producer, we also embrace our responsibility for Goal 12: *Responsible consumption & production*. In the water-intensive fields of textile manufacturing and water jetting, we recognize our role in advancing Goal 6: *Clean water & sanitation*.

Local manufacturing

We manufacture the vast majority of our products in Sweden and Latvia, working closely with trusted, long-term partners to ensure fair working conditions and responsible water management throughout our value chain. The proximity to our manufacturers also reduces the need for unnecessary long transport to our warehouse in Sweden, helping to lower our environmental impact.

Made to protect, not to waste

At TST, we avoid overproduction, ensuring that everything we create is put to use and finds its way to workplaces around the world, saving lives. Our focus is on producing only what is needed, so nearly nothing goes to waste. This approach not only supports sustainability but also aligns with our mission to provide the best protection where it's needed most.

Certified safety and quality

All our PPE products are CE certified in accordance with the PPE Regulation (EU) 2016/425: the European legislation for Personal Protective Equipment. TST Sweden is certified according to ISO 14001 environmental management and ISO 9001 for quality management. We work systematically to improve our products and reduce our climate impact.

Minimizing chemicals, maximizing protection

We follow the REACH regulation which concerns the registration, evaluation, authorization, and restriction of chemical substances. Fabric treatments including chemicals are essential for creating protective clothing with long-lasting durability, adding water and dirt resistance. We regularly evaluate new ways to minimize our chemical use, without compromising the life-saving quality of the garments.

Global reach, local support

Serving a global market often means covering long distances to reach our customers. By working with trusted local Distributors, we ensure that our products are available worldwide – without requiring constant travel from TST's sales team. However, occasional visits to our Distributors are key to ensuring they have the knowledge needed to support end customers effectively. While we are conscious of the environmental impact of air travel, we believe these trips are essential to fulfilling our mission of saving lives.

Innovating protection

Our focus is on innovation, striving to lead the industry in developing materials that make our products safer, more comfortable, and more sustainable. Through collaborative partnerships, we actively drive the advancement of technical textiles for personal protection, contributing our expertise in various networks to support ongoing development.

Safety academy

Through our promise *Saving Lives* we are committed to ensuring that our customers come home to their family and loved ones every day. Therefore, educating the world about using correct water jet protection is a task we are passionate about. Our ambition is to spread knowledge to employers and workers all around the world, helping to make safety a shared priority.

Seeds of inspiration

We are dedicated to giving back to the community by supporting local organizations and initiatives that promote a more inclusive and sustainable society. From the coffee we drink to the cars we drive, we strive to make thoughtful choices. Just outside our office, we've replaced our lawn with a wildflower meadow to boost local biodiversity – a small step we hope will plant a seed of inspiration and encourage others to join us in building a greener future. Together, we can make a real difference.





SAVING LIVES

TST Sweden AB

Segloravägen 22, 504 64 Borås, Sweden
info@tst-sweden.se | tst-sweden.com